

Datasheet for ABIN2786611
anti-Paralemmin antibody (N-Term)

3 Images

1 Publication

[Go to Product page](#)

Overview

Quantity:	100 µL
Target:	Paralemmin (PALM)
Binding Specificity:	N-Term
Reactivity:	Human, Mouse, Rat, Rabbit, Pig, Cow, Dog
Host:	Rabbit
Clonality:	Polyclonal
Conjugate:	This Paralemmin antibody is un-conjugated
Application:	Western Blotting (WB)

Product Details

Immunogen:	The immunogen is a synthetic peptide directed towards the N terminal region of human PALM
Sequence:	LEDERRQLQH LKSKALRERW LLEGTPSSAS EGDEDLRRQM QDDEQKTRLL
Predicted Reactivity:	Cow: 93%, Dog: 79%, Human: 100%, Mouse: 86%, Pig: 86%, Rabbit: 79%, Rat: 93%
Characteristics:	This is a rabbit polyclonal antibody against PALM. It was validated on Western Blot.
Purification:	Affinity Purified

Target Details

Target:	Paralemmin (PALM)
Alternative Name:	PALM (PALM Products)
Background:	This gene encodes a member of the paralemmin protein family. The product of this gene is a

Target Details

prenylated and palmitoylated phosphoprotein that associates with the cytoplasmic face of plasma membranes and is implicated in plasma membrane dynamics in neurons and other cell types. Several alternatively spliced transcript variants have been identified, but the full-length nature of only two transcript variants has been determined.

Alias Symbols: KIAA0270

Protein Interaction Partner: POT1, UBC,

Protein Size: 343

Molecular Weight: 37 kDa

Gene ID: 5064

NCBI Accession: [NM_001040134](#), [NP_001035224](#)

Pathways: [cAMP Metabolic Process](#), [Regulation of G-Protein Coupled Receptor Protein Signaling](#)

Application Details

Application Notes: Optimal working dilutions should be determined experimentally by the investigator.

Comment: Antigen size: 343 AA

Restrictions: For Research Use only

Handling

Format: Liquid

Concentration: Lot specific

Buffer: Liquid. Purified antibody supplied in 1x PBS buffer with 0.09 % (w/v) sodium azide and 2 % sucrose.

Preservative: Sodium azide

Precaution of Use: This product contains Sodium azide: a POISONOUS AND HAZARDOUS SUBSTANCE which should be handled by trained staff only.

Handling Advice: Avoid repeated freeze-thaw cycles.

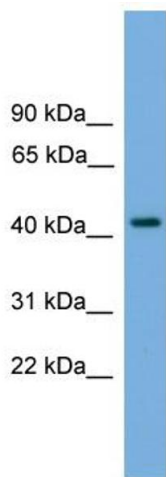
Storage: -20 °C

Storage Comment: For short term use, store at 2-8°C up to 1 week. For long term storage, store at -20°C in small aliquots to prevent freeze-thaw cycles.

Publications

Product cited in: Conti, Riva, Pesca, Iannaccone, Cannistraci, Corbo, Previtali, Quattrini, Alessio: "Increased expression of Myosin binding protein H in the skeletal muscle of amyotrophic lateral sclerosis patients." in: **Biochimica et biophysica acta**, Vol. 1842, Issue 1, pp. 99-106, (2013) ([PubMed](#)).

Images

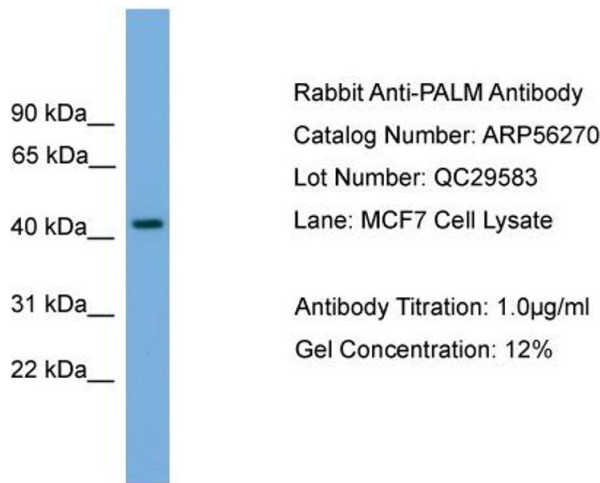


Western Blotting

Image 1. WB Suggested Anti-PALM Antibody Titration:
0.2-1 ug/ml

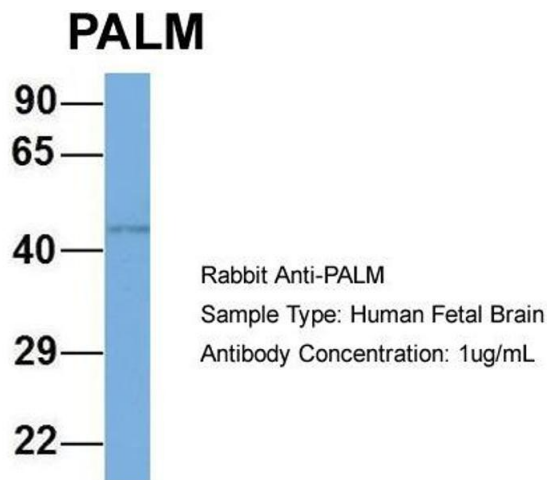
ELISA Titer: 1:1562500

Positive Control: MCF7 cell lysate



Western Blotting

Image 2. WB Suggested Anti-PALM
Antibody Titration: 0.2-1 µg/mL ELISA Titer: 1:1562500
Positive Control: MCF7 cell lysate



Western Blotting

Image 3. Host: Rabbit
Target Name: PALM
Sample Tissue: Human Fetal Brain
Antibody Dilution: 1.0 µg/mL