

Datasheet for ABIN2786612

anti-FAM63A antibody (Middle Region)[Go to Product page](#)**1** Image

Overview

Quantity:	100 µL
Target:	FAM63A
Binding Specificity:	Middle Region
Reactivity:	Human, Mouse, Rat, Cow, Dog, Guinea Pig, Horse, Rabbit
Host:	Rabbit
Clonality:	Polyclonal
Conjugate:	This FAM63A antibody is un-conjugated
Application:	Western Blotting (WB)

Product Details

Immunogen:	The immunogen is a synthetic peptide directed towards the middle region of human FAM63A
Sequence:	LQQEYQQQQ AAQPVRMRTR VLSLQGRGAT SGRPAGERRQ RPKHESDCIL
Predicted Reactivity:	Cow: 85%, Dog: 85%, Guinea Pig: 100%, Horse: 92%, Human: 100%, Mouse: 100%, Rabbit: 92%, Rat: 100%
Characteristics:	This is a rabbit polyclonal antibody against FAM63A. It was validated on Western Blot using a cell lysate as a positive control.
Purification:	Affinity Purified

Target Details

Target:	FAM63A
---------	--------

Target Details

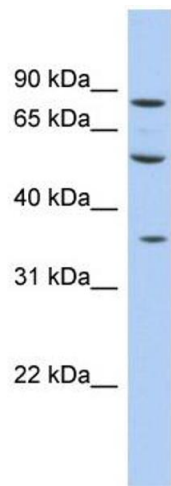
Alternative Name:	FAM63A (FAM63A Products)
Background:	<p>The specific function of this protein remains unknown.</p> <p>Alias Symbols: FLJ11280, FLJ43504, RP11-316M1.5</p> <p>Protein Interaction Partner: GMCL1, UBC, LSM8,</p> <p>Protein Size: 327</p>
Molecular Weight:	36 kDa
Gene ID:	55793
NCBI Accession:	NM_001040217 , NP_001035307
UniProt:	Q8N5J2

Application Details

Application Notes:	Optimal working dilutions should be determined experimentally by the investigator.
Comment:	Antigen size: 327 AA
Restrictions:	For Research Use only

Handling

Format:	Liquid
Concentration:	Lot specific
Buffer:	Liquid. Purified antibody supplied in 1x PBS buffer with 0.09 % (w/v) sodium azide and 2 % sucrose.
Preservative:	Sodium azide
Precaution of Use:	This product contains Sodium azide: a POISONOUS AND HAZARDOUS SUBSTANCE which should be handled by trained staff only.
Handling Advice:	Avoid repeated freeze-thaw cycles.
Storage:	-20 °C
Storage Comment:	For short term use, store at 2-8°C up to 1 week. For long term storage, store at -20°C in small aliquots to prevent freeze-thaw cycles.



Western Blotting

Image 1. WB Suggested Anti-FAM63A Antibody Titration:

0.2-1 ug/ml

ELISA Titer: 1:1562500

Positive Control: Human Liver