

Datasheet for ABIN2786615
anti-RALGDS antibody (N-Term)



[Go to Product page](#)

1 Image

Overview

Quantity:	100 µL
Target:	RALGDS
Binding Specificity:	N-Term
Reactivity:	Human, Mouse, Rat, Dog, Guinea Pig, Cow
Host:	Rabbit
Clonality:	Polyclonal
Conjugate:	This RALGDS antibody is un-conjugated
Application:	Western Blotting (WB)

Product Details

Immunogen:	The immunogen is a synthetic peptide directed towards the N terminal region of human RALGDS
Sequence:	KRYGRCDALT ASSRYGCILP YSDEDGGPQD QLKNAISSIL GTWLDQYSED
Predicted Reactivity:	Cow: 93%, Dog: 100%, Guinea Pig: 86%, Human: 100%, Mouse: 93%, Rat: 93%
Characteristics:	This is a rabbit polyclonal antibody against RALGDS. It was validated on Western Blot using a cell lysate as a positive control.
Purification:	Affinity Purified

Target Details

Target:	RALGDS
---------	--------

Target Details

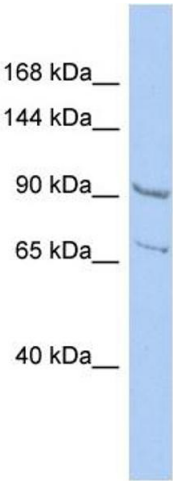
Alternative Name:	RALGDS (RALGDS Products)
Background:	<p>The specific function of this protein remains unknown.</p> <p>Alias Symbols: FLJ20922, RGF, RalGEF, RGDS</p> <p>Protein Interaction Partner: RRAS2, RAP1B, KRAS, CD68, SNCA, FADD, CASP8, HRAS, RIT2, CNKSR1, RIT1, NF2, MRAS, PDPK1, MAPK3, RAP1GAP, RAP2B, RAP2A, RAP1A, RRAS, MLLT4, ARRB2, ARRB1, RAPGEF2, RIN1, PDK1, LRPAP1,</p> <p>Protein Size: 859</p>
Molecular Weight:	95 kDa
Gene ID:	5900
NCBI Accession:	NM_001042368 , NP_001035827
UniProt:	Q6KH11
Pathways:	Neurotrophin Signaling Pathway

Application Details

Application Notes:	Optimal working dilutions should be determined experimentally by the investigator.
Comment:	Antigen size: 859 AA
Restrictions:	For Research Use only

Handling

Format:	Liquid
Concentration:	Lot specific
Buffer:	Liquid. Purified antibody supplied in 1x PBS buffer with 0.09 % (w/v) sodium azide and 2 % sucrose.
Preservative:	Sodium azide
Precaution of Use:	This product contains Sodium azide: a POISONOUS AND HAZARDOUS SUBSTANCE which should be handled by trained staff only.
Handling Advice:	Avoid repeated freeze-thaw cycles.
Storage:	-20 °C
Storage Comment:	For short term use, store at 2-8°C up to 1 week. For long term storage, store at -20°C in small aliquots to prevent freeze-thaw cycles.



Western Blotting

Image 1. WB Suggested Anti-RALGDS Antibody Titration:

0.2-1 ug/ml

ELISA Titer: 1:312500

Positive Control: HepG2 cell lysate