

Datasheet for ABIN2786618
anti-SMAP1 antibody (N-Term)[Go to Product page](#)

2 Images

Overview

Quantity:	100 µL
Target:	SMAP1
Binding Specificity:	N-Term
Reactivity:	Human, Mouse, Rat, Cow, Dog, Pig, Rabbit, Zebrafish (Danio rerio)
Host:	Rabbit
Clonality:	Polyclonal
Conjugate:	This SMAP1 antibody is un-conjugated
Application:	Western Blotting (WB)

Product Details

Immunogen:	The immunogen is a synthetic peptide corresponding to a region of Rat
Sequence:	MATRSCREKA QKLNEQHQLI LSKLLREEDN KYCADCEAKG PRWASWNIGV
Predicted Reactivity:	Cow: 100%, Dog: 100%, Human: 100%, Mouse: 100%, Pig: 100%, Rabbit: 100%, Rat: 100%, Zebrafish: 100%
Characteristics:	This is a rabbit polyclonal antibody against LOC684800. It was validated on Western Blot.
Purification:	Affinity Purified

Target Details

Target:	SMAP1
Alternative Name:	LOC684800 (SMAP1 Products)

Target Details

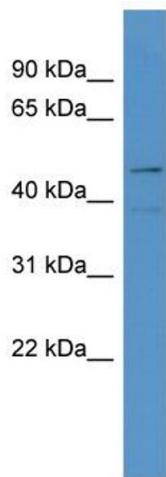
Background:	<p>Smap1 is a GTPase activating protein that acts on ARF6. Smap1 plays a role in clathrin-dependent endocytosis. Smap1 may play a role in erythropoiesis.</p> <p>Alias Symbols: LOC684800</p> <p>Protein Size: 467</p>
Molecular Weight:	50 kDa
Gene ID:	684800
NCBI Accession:	XM_002727177 , XP_002727223

Application Details

Application Notes:	Optimal working dilutions should be determined experimentally by the investigator.
Comment:	Antigen size: 467 AA
Restrictions:	For Research Use only

Handling

Format:	Liquid
Concentration:	Lot specific
Buffer:	Liquid. Purified antibody supplied in 1x PBS buffer with 0.09 % (w/v) sodium azide and 2 % sucrose.
Preservative:	Sodium azide
Precaution of Use:	This product contains Sodium azide: a POISONOUS AND HAZARDOUS SUBSTANCE which should be handled by trained staff only.
Handling Advice:	Avoid repeated freeze-thaw cycles.
Storage:	-20 °C
Storage Comment:	For short term use, store at 2-8°C up to 1 week. For long term storage, store at -20°C in small aliquots to prevent freeze-thaw cycles.



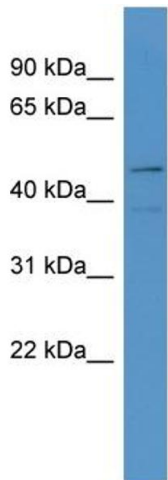
Western Blotting

Image 1. WB Suggested Anti-LOC684800 Antibody

Titration: 0.2-1 ug/ml

ELISA Titer: 1:1562500

Positive Control: Rat Heart



Rabbit Anti-Smap1 Antibody
Catalog Number: ARP56281
Lot Number: QC29052
Lane: Rat Heart Lysate

Antibody Titration: 1.0µg/ml
Gel Concentration: 12%

Western Blotting

Image 2. WB Suggested Anti-LOC684800

Antibody Titration: 0.2-1 µg/mL ELISA Titer: 1:1562500

Positive Control: Rat Heart