

Datasheet for ABIN2786619
anti-SMAP1 antibody (Middle Region)[Go to Product page](#)

2 Images

Overview

Quantity:	100 µL
Target:	SMAP1
Binding Specificity:	Middle Region
Reactivity:	Human, Mouse, Rat, Cow, Dog, Pig, Rabbit, Guinea Pig, Horse
Host:	Rabbit
Clonality:	Polyclonal
Conjugate:	This SMAP1 antibody is un-conjugated
Application:	Western Blotting (WB)

Product Details

Immunogen:	The immunogen is a synthetic peptide directed towards the middle region of human SMAP1
Sequence:	KEPEKPAKPL TAEKLQKKDQ QLEPKKSTSP KKAAEPTVDL LGLDGPAVAP
Predicted Reactivity:	Cow: 93%, Dog: 93%, Guinea Pig: 87%, Horse: 93%, Human: 100%, Mouse: 86%, Pig: 93%, Rabbit: 93%, Rat: 93%
Characteristics:	This is a rabbit polyclonal antibody against SMAP1. It was validated on Western Blot using a cell lysate as a positive control.
Purification:	Affinity Purified

Target Details

Target:	SMAP1
---------	-------

Target Details

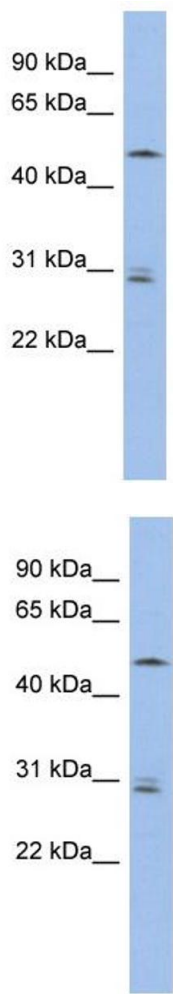
Alternative Name:	SMAP1 (SMAP1 Products)
Background:	<p>The protein encoded by this gene is similar to the mouse stromal membrane-associated protein-1. This similarity suggests that this human gene product is also a type II membrane glycoprotein involved in the erythropoietic stimulatory activity of stromal ce</p> <p>Alias Symbols: FLJ13159, FLJ42245, SMAP-1</p> <p>Protein Interaction Partner: UBC, APP, SMURF2, BRF2, WRAP73, PHLDA3, PTP4A3,</p> <p>Protein Size: 467</p>
Molecular Weight:	50 kDa
Gene ID:	60682
NCBI Accession:	NM_001044305 , NP_001037770
UniProt:	Q8IYB5

Application Details

Application Notes:	Optimal working dilutions should be determined experimentally by the investigator.
Comment:	Antigen size: 467 AA
Restrictions:	For Research Use only

Handling

Format:	Liquid
Concentration:	Lot specific
Buffer:	Liquid. Purified antibody supplied in 1x PBS buffer with 0.09 % (w/v) sodium azide and 2 % sucrose.
Preservative:	Sodium azide
Precaution of Use:	This product contains Sodium azide: a POISONOUS AND HAZARDOUS SUBSTANCE which should be handled by trained staff only.
Handling Advice:	Avoid repeated freeze-thaw cycles.
Storage:	-20 °C
Storage Comment:	For short term use, store at 2-8°C up to 1 week. For long term storage, store at -20°C in small aliquots to prevent freeze-thaw cycles.



Western Blotting

Image 1. WB Suggested Anti-SMAP1 Antibody Titration:

0.2-1 ug/ml

ELISA Titer: 1:312500

Positive Control: OVCAR-3 cell lysate

Western Blotting

Image 2. WB Suggested Anti-SMAP1

Antibody Titration: 0.2-1 µg/mL ELISA Titer: 1:12500

Positive Control: OVCAR-3 cell lysate

SMAP1 is supported by BioGPS gene expression data to be expressed in OVCAR3