

Datasheet for ABIN2786624
anti-KIAA1191 antibody (Middle Region)[Go to Product page](#)

1 Image

Overview

Quantity:	100 µL
Target:	KIAA1191
Binding Specificity:	Middle Region
Reactivity:	Human, Dog, Cow, Horse, Pig
Host:	Rabbit
Clonality:	Polyclonal
Conjugate:	This KIAA1191 antibody is un-conjugated
Application:	Western Blotting (WB)

Product Details

Immunogen:	The immunogen is a synthetic peptide directed towards the middle region of human KIAA1191
Sequence:	TPHSSPKQRP RGWFTSGSST ALPGPNPSTM DSGSGDKDRN LSDKWSLFGP
Predicted Reactivity:	Cow: 79%, Dog: 86%, Horse: 86%, Human: 100%, Pig: 79%
Characteristics:	This is a rabbit polyclonal antibody against KIAA1191. It was validated on Western Blot using a cell lysate as a positive control.
Purification:	Affinity Purified

Target Details

Target:	KIAA1191
Alternative Name:	KIAA1191 (KIAA1191 Products)

Target Details

Background: The specific function of this protein remains unknown.
Alias Symbols: FLJ21022, p60MONOX
Protein Interaction Partner: APP, PRNP, POT1, GSK3B, CACNA1A, SNCA, NOL12,
Protein Size: 305

Molecular Weight: 33 kDa

Gene ID: 57179

NCBI Accession: [NM_001079685](#), [NP_001073153](#)

UniProt: [Q96A73](#)

Application Details

Application Notes: Optimal working dilutions should be determined experimentally by the investigator.

Comment: Antigen size: 305 AA

Restrictions: For Research Use only

Handling

Format: Liquid

Concentration: Lot specific

Buffer: Liquid. Purified antibody supplied in 1x PBS buffer with 0.09 % (w/v) sodium azide and 2 % sucrose.

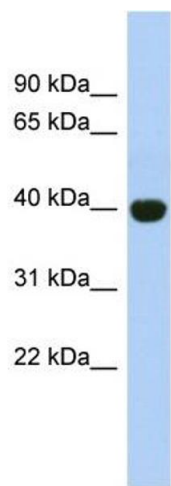
Preservative: Sodium azide

Precaution of Use: This product contains Sodium azide: a POISONOUS AND HAZARDOUS SUBSTANCE which should be handled by trained staff only.

Handling Advice: Avoid repeated freeze-thaw cycles.

Storage: -20 °C

Storage Comment: For short term use, store at 2-8°C up to 1 week. For long term storage, store at -20°C in small aliquots to prevent freeze-thaw cycles.



Western Blotting				
Image	1.	WB	Suggested	Anti-KIAA1191 Antibody
Titration: 0.2-1 ug/ml				
ELISA Titer: 1:62500				
Positive Control: Human Placenta				