

Datasheet for ABIN2786625
anti-Myosin IC antibody (N-Term)



[Go to Product page](#)

1 Image

Overview

| | |
|----------------------|---|
| Quantity: | 100 µL |
| Target: | Myosin IC (MYO1C) |
| Binding Specificity: | N-Term |
| Reactivity: | Human, Rat, Mouse, Cow, Dog, Guinea Pig, Horse, Rabbit, Zebrafish (Danio rerio) |
| Host: | Rabbit |
| Clonality: | Polyclonal |
| Conjugate: | This Myosin IC antibody is un-conjugated |
| Application: | Western Blotting (WB) |

Product Details

| | |
|-----------------------|---|
| Immunogen: | The immunogen is a synthetic peptide directed towards the N terminal region of human MYO1C |
| Sequence: | NPVLEAFGNA KTLRNDNSSR FGKYMDVQFD FKGAPVGGHI LSYLLEKSRV |
| Specificity: | Isoform 1, 2 and 3 |
| Predicted Reactivity: | Cow: 100%, Dog: 100%, Guinea Pig: 100%, Horse: 100%, Human: 100%, Mouse: 100%, Rabbit: 100%, Rat: 100%, Zebrafish: 100% |
| Characteristics: | This is a rabbit polyclonal antibody against MYO1C. It was validated on Western Blot using a cell lysate as a positive control. |
| Purification: | Affinity Purified |

Target Details

| | |
|-------------------|--|
| Target: | Myosin IC (MYO1C) |
| Alternative Name: | MYO1C (MYO1C Products) |
| Background: | <p>This gene encodes a member of the unconventional myosin protein family, which are actin-based molecular motors. The protein is found in the cytoplasm, and one isoform with a unique N-terminus is also found in the nucleus. The nuclear isoform associates with</p> <p>Alias Symbols: FLJ23903, MMI-beta, MMIb, NMI, myr2</p> <p>Protein Interaction Partner: UBC, TP53, SUMO2, RPA3, RPA2, RPA1, SUZ12, CBL, UBD, KDR, PAN2, IQCB1, ESR1, SAP18, HNRNPR, DDX21, DNAJA3, MYH10, ILF3, SEPT7, ACTA2, LRRK2, SHC1, GRK5, UBE2Q2, FBXO25, KHDRBS1, SP1, ARRB2, ARRB1, SIRT7, SUMO1, EMD, BAZ1B, SMARCA5, USP20, RRN3, WRAP73, NE</p> <p>Protein Size: 1028</p> |
| Molecular Weight: | 118 kDa |
| Gene ID: | 4641 |
| NCBI Accession: | NM_033375 , NP_203693 |
| Pathways: | Platelet-derived growth Factor Receptor Signaling |

Application Details

| | |
|--------------------|--|
| Application Notes: | Optimal working dilutions should be determined experimentally by the investigator. |
| Comment: | Antigen size: 1028 AA |
| Restrictions: | For Research Use only |

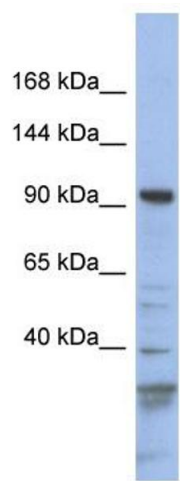
Handling

| | |
|--------------------|--|
| Format: | Liquid |
| Concentration: | Lot specific |
| Buffer: | Liquid. Purified antibody supplied in 1x PBS buffer with 0.09 % (w/v) sodium azide and 2 % sucrose. |
| Preservative: | Sodium azide |
| Precaution of Use: | This product contains Sodium azide: a POISONOUS AND HAZARDOUS SUBSTANCE which should be handled by trained staff only. |
| Handling Advice: | Avoid repeated freeze-thaw cycles. |

Handling

| | |
|------------------|---|
| Storage: | -20 °C |
| Storage Comment: | For short term use, store at 2-8°C up to 1 week. For long term storage, store at -20°C in small aliquots to prevent freeze-thaw cycles. |

Images



Western Blotting

Image 1. WB Suggested Anti-MY01C Antibody Titration:

0.2-1 ug/ml

ELISA Titer: 1:312500

Positive Control: NCI-H226 cell lysate