

Datasheet for ABIN2786634
anti-TBC1D14 antibody (N-Term)[Go to Product page](#)

1 Image

Overview

Quantity:	100 µL
Target:	TBC1D14
Binding Specificity:	N-Term
Reactivity:	Human, Mouse, Dog, Cow, Horse, Pig, Rat
Host:	Rabbit
Clonality:	Polyclonal
Conjugate:	This TBC1D14 antibody is un-conjugated
Application:	Western Blotting (WB)

Product Details

Immunogen:	The immunogen is a synthetic peptide directed towards the N terminal region of human TBC1D14
Sequence:	MTDGKLSTST NGVAFMGILD GRPGNPLQNL QHVNLIKAPRL LSAPEYGPKL
Predicted Reactivity:	Cow: 92%, Dog: 85%, Horse: 92%, Human: 100%, Mouse: 85%, Pig: 85%, Rat: 85%
Characteristics:	This is a rabbit polyclonal antibody against TBC1D14. It was validated on Western Blot using a cell lysate as a positive control.
Purification:	Affinity Purified

Target Details

Target:	TBC1D14
---------	---------

Target Details

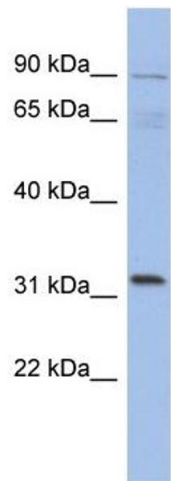
Alternative Name:	TBC1D14 (TBC1D14 Products)
Background:	TBC1D14 may act as a GTPase-activating protein for Rab family protein(s). Alias Symbols: FLJ32400, KIAA1322 Protein Interaction Partner: UBE3A, Protein Size: 693
Molecular Weight:	76 kDa
Gene ID:	57533
NCBI Accession:	NM_001113361 , NP_001106832
UniProt:	Q9P2M4

Application Details

Application Notes:	Optimal working dilutions should be determined experimentally by the investigator.
Comment:	Antigen size: 693 AA
Restrictions:	For Research Use only

Handling

Format:	Liquid
Concentration:	Lot specific
Buffer:	Liquid. Purified antibody supplied in 1x PBS buffer with 0.09 % (w/v) sodium azide and 2 % sucrose.
Preservative:	Sodium azide
Precaution of Use:	This product contains Sodium azide: a POISONOUS AND HAZARDOUS SUBSTANCE which should be handled by trained staff only.
Handling Advice:	Avoid repeated freeze-thaw cycles.
Storage:	-20 °C
Storage Comment:	For short term use, store at 2-8°C up to 1 week. For long term storage, store at -20°C in small aliquots to prevent freeze-thaw cycles.



Western Blotting				
Image	1.	WB	Suggested	Anti-TBC1D14 Antibody
Titration: 0.2-1 ug/ml				
ELISA Titer: 1:62500				
Positive Control: 721_B cell lysate				