

Datasheet for ABIN2786636  
**anti-MTRF1L antibody (N-Term)**[Go to Product page](#)

## 1 Image

## Overview

Quantity:	100 µL
Target:	MTRF1L
Binding Specificity:	N-Term
Reactivity:	Human
Host:	Rabbit
Clonality:	Polyclonal
Conjugate:	This MTRF1L antibody is un-conjugated
Application:	Western Blotting (WB)

## Product Details

Immunogen:	The immunogen is a synthetic peptide directed towards the N terminal region of human RF1ML
Sequence:	MRSRVLWGAA RWLWPRRAVG PARRPLSSGS PPLEELFTRG GPLRTFLERQ
Predicted Reactivity:	Cow: 86%, Guinea Pig: 93%, Horse: 93%, Human: 100%, Mouse: 77%, Rabbit: 92%, Rat: 83%
Characteristics:	This is a rabbit polyclonal antibody against MTRF1L. It was validated on Western Blot using a cell lysate as a positive control.
Purification:	Affinity purified

## Target Details

Target:	MTRF1L
Alternative Name:	MTRF1L ( <a href="#">MTRF1L Products</a> )

## Target Details

Background:	<p>The protein encoded by this gene plays a role in mitochondrial translation termination, and is thought to be a release factor that is involved in the dissociation of the complete protein from the final tRNA, the ribosome, and the cognate mRNA. This protein acts upon UAA and UAG stop codons, but has no in vitro activity against UGA, which encodes tryptophan in human mitochondrion, or, the mitochondrial non-cognate stop codons, AGA and AGG. This protein shares sequence similarity to bacterial release factors. Pseudogenes of this gene are found on chromosomes 4, 8, and 11. Alternative splicing results in multiple transcript variants.</p> <p>Alias Symbols: MRF1L, HMRF1L, mtRF1a,</p> <p>Protein Interaction Partner: UBC,</p> <p>Protein Size: 271</p>
Molecular Weight:	29 kDa
Gene ID:	54516
NCBI Accession:	<a href="#">NM_001114184</a> , <a href="#">NP_001107656</a>
UniProt:	<a href="#">Q9UGC7</a>

## Application Details

Application Notes:	Optimal working dilutions should be determined experimentally by the investigator.
Comment:	Antigen size: 271 AA
Restrictions:	For Research Use only

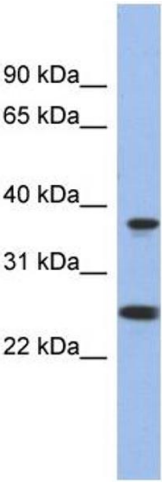
## Handling

Format:	Liquid
Concentration:	Lot specific
Buffer:	Liquid. Purified antibody supplied in 1x PBS buffer with 0.09 % (w/v) sodium azide and 2 % sucrose.
Preservative:	Sodium azide
Precaution of Use:	This product contains Sodium azide: a POISONOUS AND HAZARDOUS SUBSTANCE which should be handled by trained staff only.
Handling Advice:	Avoid repeated freeze-thaw cycles.
Storage:	-20 °C

Handling

Storage Comment: For short term use, store at 2-8°C up to 1 week. For long term storage, store at -20°C in small aliquots to prevent freeze-thaw cycles.

Images



Western Blotting

**Image 1. WB Suggested Anti-MTRF1L Antibody Titration:**

0.2-1 ug/ml

**ELISA Titer:** 1:12500

**Positive Control:** 721\_B cell lysate