

Datasheet for ABIN2786651
anti-MARK3 antibody (Middle Region)[Go to Product page](#)

3 Images

Overview

Quantity:	100 µL
Target:	MARK3
Binding Specificity:	Middle Region
Reactivity:	Human, Mouse, Rat, Horse, Zebrafish (Danio rerio), Rabbit, Cow, Dog, Guinea Pig
Host:	Rabbit
Clonality:	Polyclonal
Conjugate:	This MARK3 antibody is un-conjugated
Application:	Western Blotting (WB)

Product Details

Immunogen:	The immunogen is a synthetic peptide directed towards the middle region of human MARK3
Sequence:	ATYNGPPASP SLSHEATPLS QTRSRGSTNL FSKLTSKLTR SRNVSAEQKD
Predicted Reactivity:	Cow: 100%, Dog: 100%, Guinea Pig: 100%, Horse: 100%, Human: 100%, Mouse: 100%, Rabbit: 100%, Rat: 100%, Zebrafish: 86%
Characteristics:	This is a rabbit polyclonal antibody against MARK3. It was validated on Western Blot using a cell lysate as a positive control.
Purification:	Affinity Purified

Target Details

Target:	MARK3
---------	-------

Target Details

Alternative Name:	MARK3 (MARK3 Products)
Background:	<p>MARK3 is involved in the specific phosphorylation of microtubule-associated proteins for tau, MAP2 and MAP4. Phosphorylates CDC25C on 'Ser-216'.</p> <p>Alias Symbols: CTAK1, KP78, PAR1A, Par-1a</p> <p>Protein Interaction Partner: Crtc2, UBC, MAPT, YWHAZ, YWHAH, YWHAG, YWHAE, YWHAB, YWHAQ, SFN, ASB13, TCEA2, PIM1, MARK3, CDC25C, KSR1, USP21, PKP2, MAP2, MITF, PRKAA1, TADA2A, TERF2, HDAC7, HDAC5, HDAC4, MARK2, SAAL1, ANKRD7, VPS11, PNPLA2, NOL11, PMPCB, CHGB, FANCF, CPSF4, DYNLL1, P</p> <p>Protein Size: 729</p>
Molecular Weight:	81 kDa
Gene ID:	4140
NCBI Accession:	NM_002376 , NP_002367
Pathways:	SARS-CoV-2 Protein Interactome

Application Details

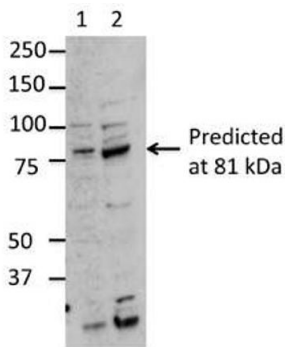
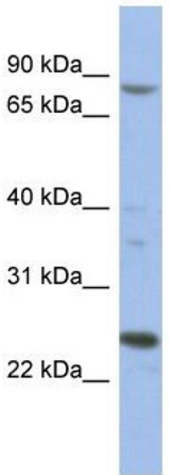
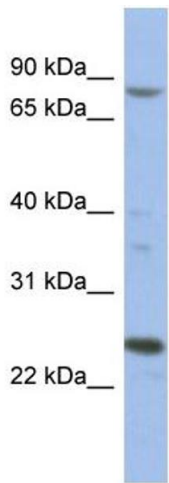
Application Notes:	Optimal working dilutions should be determined experimentally by the investigator.
Comment:	Antigen size: 729 AA
Restrictions:	For Research Use only

Handling

Format:	Liquid
Concentration:	Lot specific
Buffer:	Liquid. Purified antibody supplied in 1x PBS buffer with 0.09 % (w/v) sodium azide and 2 % sucrose.
Preservative:	Sodium azide
Precaution of Use:	This product contains Sodium azide: a POISONOUS AND HAZARDOUS SUBSTANCE which should be handled by trained staff only.
Handling Advice:	Avoid repeated freeze-thaw cycles.
Storage:	-20 °C
Storage Comment:	For short term use, store at 2-8°C up to 1 week. For long term storage, store at -20°C in small

aliquots to prevent freeze-thaw cycles.

Images



Lane 1 = 10µg mouse brain extract
Lane 2 = 50µg mouse brain extract

See Immunoblot 2 for more information.

Western Blotting

Image 1. WB Suggested Anti-MARK3
Antibody Titration: 0.2-1 µg/mL ELISA Titer: 1:12500
Positive Control: 93T cell lysate
MARK3 is supported by BioGPS gene expression data to be expressed in HEK293T

Western Blotting

Image 2. WB Suggested Anti-MARK3 Antibody Titration:
0.2-1 ug/ml
ELISA Titer: 1:312500
Positive Control: 293T cell lysate

Western Blotting

Image 3. Sample Type: Lane1 = 10ug mouse brain extract,
Lane 2 = 50ug mouse brain extract
Primary Antibody Dilution: Anti-MARK3 1:2500
Submitted By: Dr. Veronique Dorval, Laval University