

Datasheet for ABIN2786655  
**anti-MAP3K11 antibody (Middle Region)**[Go to Product page](#)

## 2 Images

## Overview

Quantity:	100 µL
Target:	MAP3K11
Binding Specificity:	Middle Region
Reactivity:	Human, Mouse, Rat, Cow, Guinea Pig, Horse, Rabbit
Host:	Rabbit
Clonality:	Polyclonal
Conjugate:	This MAP3K11 antibody is un-conjugated
Application:	Western Blotting (WB)

## Product Details

Immunogen:	The immunogen is a synthetic peptide directed towards the middle region of human MAP3K11
Sequence:	PVGQRSAKSP RREEPRGGT VSPPPGETSRS APGTPGTPRS PPLGLISRPR
Predicted Reactivity:	Cow: 100%, Guinea Pig: 100%, Horse: 100%, Human: 100%, Mouse: 100%, Rabbit: 100%, Rat: 100%
Characteristics:	This is a rabbit polyclonal antibody against MAP3K11. It was validated on Western Blot using a cell lysate as a positive control.
Purification:	Affinity Purified

## Target Details

Target:	MAP3K11
---------	---------

## Target Details

Alternative Name:	MAP3K11 ( <a href="#">MAP3K11 Products</a> )
Background:	<p>The protein encoded by this gene is a member of the serine/threonine kinase family. This kinase contains a SH3 domain and a leucine zipper-basic motif. This kinase preferentially activates MAPK8/JNK kinase, and functions as a positive regulator of JNK sig</p> <p>Alias Symbols: MGC17114, MLK-3, MLK3, PTK1, SPRK, MEKK11</p> <p>Protein Interaction Partner: STUB1, UBC, HSP90AA1, HSPA4, APP, CDC37, MAP2K7, HSP90AB1, PIN1, GSK3B, GSK3A, EPS8, MAPK8IP1, TRAF6, MAP3K11, CBL, MAP4K2, TRIM5, CLEC4G, TRAF2, COPS5, SH3RF1, MAPK8IP3, MAPK8IP2, KIF3A, IKBKB, RAC1, MAP4K1, CHUK, MAP3K12, RHOG, AKT1, CDC42, MAP2K4, DLG4</p> <p>Protein Size: 847</p>
Molecular Weight:	93 kDa
Gene ID:	4296
NCBI Accession:	<a href="#">NM_002419</a> , <a href="#">NP_002410</a>
UniProt:	<a href="#">Q16584</a>
Pathways:	<a href="#">MAPK Signaling</a> , <a href="#">Interferon-gamma Pathway</a>

## Application Details

Application Notes:	Optimal working dilutions should be determined experimentally by the investigator.
Comment:	Antigen size: 847 AA
Restrictions:	For Research Use only

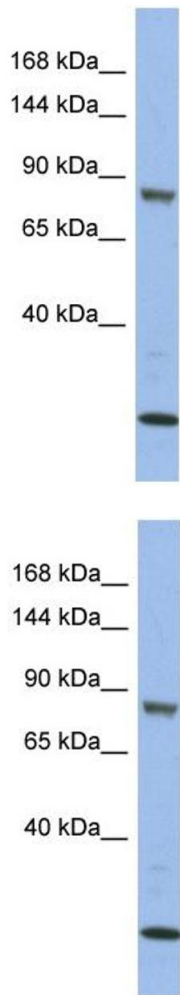
## Handling

Format:	Liquid
Concentration:	Lot specific
Buffer:	Liquid. Purified antibody supplied in 1x PBS buffer with 0.09 % (w/v) sodium azide and 2 % sucrose.
Preservative:	Sodium azide
Precaution of Use:	This product contains Sodium azide: a POISONOUS AND HAZARDOUS SUBSTANCE which should be handled by trained staff only.
Handling Advice:	Avoid repeated freeze-thaw cycles.

Handling

Storage:	-20 °C
Storage Comment:	For short term use, store at 2-8°C up to 1 week. For long term storage, store at -20°C in small aliquots to prevent freeze-thaw cycles.

Images



Western Blotting

**Image 1. WB Suggested Anti-MAP3K11 Antibody**  
**Titration:** 0.2-1 ug/ml  
**ELISA Titer:** 1:312500  
**Positive Control:** HepG2 cell lysate

Western Blotting

**Image 2. WB Suggested Anti-MAP3K11**  
Antibody Titration: 0.2-1 µg/mL ELISA Titer: 1:12500  
Positive Control: HepG2 cell lysate  
MAP3K11 is supported by BioGPS gene expression data to be expressed in HepG2