

Datasheet for ABIN2786661
anti-NDUFC1 antibody (Middle Region)[Go to Product page](#)

1 Image

Overview

Quantity:	100 µL
Target:	NDUFC1
Binding Specificity:	Middle Region
Reactivity:	Human, Mouse, Rat, Dog, Cow, Guinea Pig, Horse, Rabbit
Host:	Rabbit
Clonality:	Polyclonal
Conjugate:	This NDUFC1 antibody is un-conjugated
Application:	Western Blotting (WB)

Product Details

Immunogen:	The immunogen is a synthetic peptide directed towards the middle region of human NDUFC1
Sequence:	RSKFYVREPP NAKPDWLKVG FTLGTTVFLW IYLIKQHNE ILEYKRRNGL
Predicted Reactivity:	Cow: 93%, Dog: 93%, Guinea Pig: 93%, Horse: 93%, Human: 100%, Mouse: 92%, Rabbit: 93%, Rat: 92%
Characteristics:	This is a rabbit polyclonal antibody against NDUFC1. It was validated on Western Blot using a cell lysate as a positive control.
Purification:	Affinity Purified

Target Details

Target:	NDUFC1
---------	--------

Target Details

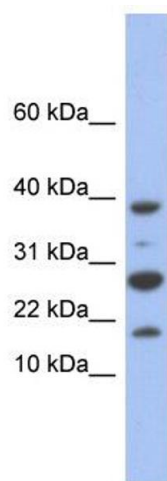
Alternative Name:	NDUFC1 (NDUFC1 Products)
Background:	<p>NDUFC1 is the accessory subunit of the mitochondrial membrane respiratory chain NADH dehydrogenase (Complex I), that is believed not to be involved in catalysis. Complex I functions in the transfer of electrons from NADH to the respiratory chain. The imme</p> <p>Alias Symbols: KFYI, MGC117464, MGC126847, MGC138266</p> <p>Protein Size: 76</p>
Molecular Weight:	9 kDa
Gene ID:	4717
NCBI Accession:	NM_002494 , NP_002485
UniProt:	O43677

Application Details

Application Notes:	Optimal working dilutions should be determined experimentally by the investigator.
Comment:	Antigen size: 76 AA
Restrictions:	For Research Use only

Handling

Format:	Liquid
Concentration:	Lot specific
Buffer:	Liquid. Purified antibody supplied in 1x PBS buffer with 0.09 % (w/v) sodium azide and 2 % sucrose.
Preservative:	Sodium azide
Precaution of Use:	This product contains Sodium azide: a POISONOUS AND HAZARDOUS SUBSTANCE which should be handled by trained staff only.
Handling Advice:	Avoid repeated freeze-thaw cycles.
Storage:	-20 °C
Storage Comment:	For short term use, store at 2-8°C up to 1 week. For long term storage, store at -20°C in small aliquots to prevent freeze-thaw cycles.



Western Blotting

Image 1. WB Suggested Anti-NDUFC1 Antibody Titration:

0.2-1 ug/ml

ELISA Titer: 1:62500

Positive Control: Human Liver