

Datasheet for ABIN2786662
anti-NPTX2 antibody (N-Term)[Go to Product page](#)

2 Images

Overview

Quantity:	100 µL
Target:	NPTX2
Binding Specificity:	N-Term
Reactivity:	Human, Mouse, Rat, Dog, Guinea Pig, Cow
Host:	Rabbit
Clonality:	Polyclonal
Conjugate:	This NPTX2 antibody is un-conjugated
Application:	Western Blotting (WB)

Product Details

Immunogen:	The immunogen is a synthetic peptide directed towards the N terminal region of human NPTX2
Sequence:	VQKETLGAQ REAIRELTGK LARCELAGG KARGAGATGK DTMGDLPRDP
Predicted Reactivity:	Cow: 93%, Dog: 100%, Guinea Pig: 100%, Human: 100%, Mouse: 100%, Rat: 100%
Characteristics:	This is a rabbit polyclonal antibody against NPTX2. It was validated on Western Blot.
Purification:	Affinity Purified

Target Details

Target:	NPTX2
Alternative Name:	NPTX2 (NPTX2 Products)
Background:	This gene encodes a member of the family of neuronal petraxins, synaptic proteins that are

Target Details

related to C-reactive protein. This protein is involved in excitatory synapse formation. It also plays a role in clustering of alpha-amino-3-hydroxy-5-methyl-4-isoxazolepropionic acid (AMPA)-type glutamate receptors at established synapses, resulting in non-apoptotic cell death of dopaminergic nerve cells. Up-regulation of this gene in Parkinson disease (PD) tissues suggests that the protein may be involved in the pathology of PD.

Alias Symbols: NARP, NP-II, NP2

Protein Interaction Partner: NPTXR, Nptx1,

Protein Size: 431

Molecular Weight: 47 kDa

Gene ID: 4885

NCBI Accession: [NM_002523](#), [NP_002514](#)

UniProt: [P47972](#)

Application Details

Application Notes: Optimal working dilutions should be determined experimentally by the investigator.

Comment: Antigen size: 431 AA

Restrictions: For Research Use only

Handling

Format: Liquid

Concentration: Lot specific

Buffer: Liquid. Purified antibody supplied in 1x PBS buffer with 0.09 % (w/v) sodium azide and 2 % sucrose.

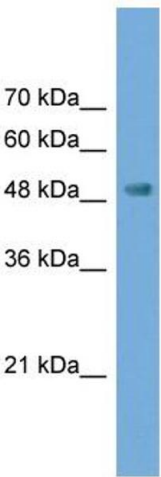
Preservative: Sodium azide

Precaution of Use: This product contains Sodium azide: a POISONOUS AND HAZARDOUS SUBSTANCE which should be handled by trained staff only.

Handling Advice: Avoid repeated freeze-thaw cycles.

Storage: -20 °C

Storage Comment: For short term use, store at 2-8°C up to 1 week. For long term storage, store at -20°C in small aliquots to prevent freeze-thaw cycles.

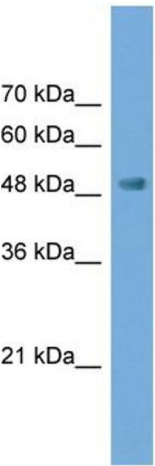


Western Blotting

Image 1. WB Suggested Anti-NPTX2 Antibody Titration:
0.2-1 ug/ml

ELISA Titer: 1:1562500

Positive Control: Transfected 293T



Rabbit Anti-NPTX2 Antibody
Catalog Number: ARP56365
Lot Number: QC27361
Lane: Transfected 293T Cell Lysate

Antibody Titration: 1.0µg/ml
Gel Concentration: 12%

Western Blotting

Image 2. WB Suggested Anti-NPTX2
Antibody Titration: 0.2-1 µg/mL ELISA Titer: 1:1562500
Positive Control: Transfected 293T