



[Go to Product page](#)

Datasheet for ABIN2786663  
**anti-NPTX2 antibody (Middle Region)**

2 Images

Overview

Quantity:	100 µL
Target:	NPTX2
Binding Specificity:	Middle Region
Reactivity:	Human, Mouse, Rat, Dog, Guinea Pig, Cow, Horse, Pig, Rabbit, Zebrafish (Danio rerio)
Host:	Rabbit
Clonality:	Polyclonal
Conjugate:	This NPTX2 antibody is un-conjugated
Application:	Western Blotting (WB)

Product Details

Immunogen:	The immunogen is a synthetic peptide directed towards the middle region of human NPTX2
Sequence:	ELEDEKSL LH NETSAHRQKT ESTLNALLQR VTELERGNSA FKSPDAFKVS
Predicted Reactivity:	Cow: 100%, Dog: 100%, Guinea Pig: 86%, Horse: 100%, Human: 100%, Mouse: 100%, Pig: 100%, Rabbit: 100%, Rat: 93%, Zebrafish: 77%
Characteristics:	This is a rabbit polyclonal antibody against NPTX2. It was validated on Western Blot.
Purification:	Affinity Purified

Target Details

Target:	NPTX2
Alternative Name:	NPTX2 ( <a href="#">NPTX2 Products</a> )

## Target Details

---

**Background:** This gene encodes a member of the family of neuronal petraxins, synaptic proteins that are related to C-reactive protein. This protein is involved in excitatory synapse formation. It also plays a role in clustering of alpha-amino-3-hydroxy-5-methyl-4-isoxazolepropionic acid (AMPA)-type glutamate receptors at established synapses, resulting in non-apoptotic cell death of dopaminergic nerve cells. Up-regulation of this gene in Parkinson disease (PD) tissues suggests that the protein may be involved in the pathology of PD.

Alias Symbols: NARP, NP-II, NP2

Protein Interaction Partner: NPTXR, Nptx1,

Protein Size: 431

---

**Molecular Weight:** 47 kDa

---

**Gene ID:** 4885

---

**NCBI Accession:** [NM\\_002523](#), [NP\\_002514](#)

---

**UniProt:** [P47972](#)

## Application Details

---

**Application Notes:** Optimal working dilutions should be determined experimentally by the investigator.

---

**Comment:** Antigen size: 431 AA

---

**Restrictions:** For Research Use only

## Handling

---

**Format:** Liquid

---

**Concentration:** Lot specific

---

**Buffer:** Liquid. Purified antibody supplied in 1x PBS buffer with 0.09 % (w/v) sodium azide and 2 % sucrose.

---

**Preservative:** Sodium azide

---

**Precaution of Use:** This product contains Sodium azide: a POISONOUS AND HAZARDOUS SUBSTANCE which should be handled by trained staff only.

---

**Handling Advice:** Avoid repeated freeze-thaw cycles.

---

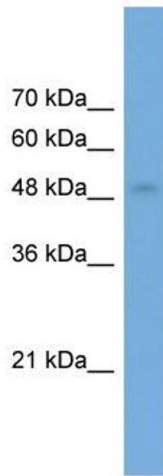
**Storage:** -20 °C

---

**Storage Comment:** For short term use, store at 2-8°C up to 1 week. For long term storage, store at -20°C in small

aliquots to prevent freeze-thaw cycles.

Images



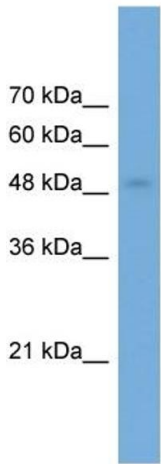
**Western Blotting**

**Image 1. WB Suggested Anti-NPTX2 Antibody Titration:**

0.2-1 ug/ml

**ELISA Titer:** 1:312500

**Positive Control:** Transfected 293T



Rabbit Anti-NPTX2 Antibody  
Catalog Number: ARP56366  
Lot Number: QC27362  
Lane: Transfected 293T Cell Lysate

Antibody Titration: 1.0µg/ml  
Gel Concentration: 12%

**Western Blotting**

**Image 2. WB Suggested Anti-NPTX2**

Antibody Titration: 0.2-1 µg/mL ELISA Titer: 1:12500

Positive Control: Transfected 293T