

Datasheet for ABIN2786664

**anti-Neurotrophin 3 antibody (N-Term)**[Go to Product page](#)**2** Images

## Overview

Quantity:	100 µL
Target:	Neurotrophin 3 (NTF3)
Binding Specificity:	N-Term
Reactivity:	Human, Mouse, Rat, Cow, Dog, Guinea Pig, Horse, Rabbit
Host:	Rabbit
Clonality:	Polyclonal
Conjugate:	This Neurotrophin 3 antibody is un-conjugated
Application:	Western Blotting (WB)

## Product Details

Immunogen:	The immunogen is a synthetic peptide directed towards the N-terminal region of Ntf3
Sequence:	LAYLRGIQGN NMDQRSLPED SLNSLIKLI QADILKNKLS KQMVDVKENY
Predicted Reactivity:	Cow: 100%, Dog: 93%, Guinea Pig: 100%, Horse: 100%, Human: 100%, Mouse: 100%, Rabbit: 100%, Rat: 100%
Characteristics:	This is a rabbit polyclonal antibody against Ntf3. It was validated on Western Blot.
Purification:	Affinity Purified

## Target Details

Target:	Neurotrophin 3 (NTF3)
Alternative Name:	Ntf3 ( <a href="#">NTF3 Products</a> )

## Target Details

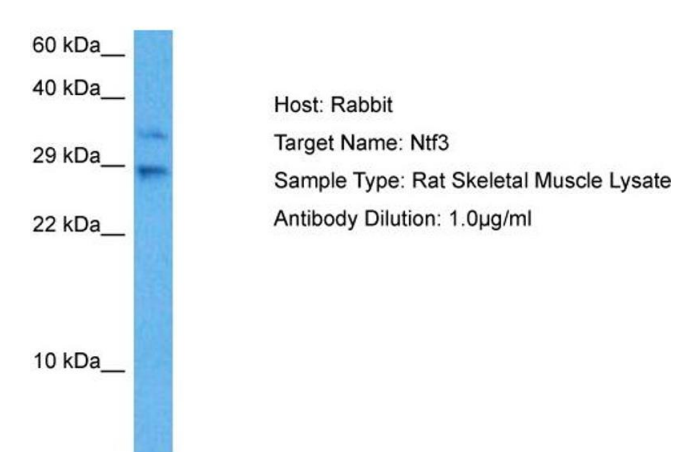
Background:	Ntf3 is a neuronal survival protein. Protein Size: 258
Molecular Weight:	28 kDa
Gene ID:	81737
NCBI Accession:	<a href="#">NM_031073</a> , <a href="#">NP_112335</a>
UniProt:	<a href="#">P18280</a>
Pathways:	<a href="#">RTK Signaling</a> , <a href="#">Neurotrophin Signaling Pathway</a>

## Application Details

Application Notes:	Optimal working dilutions should be determined experimentally by the investigator.
Comment:	Antigen size: 258 AA
Restrictions:	For Research Use only

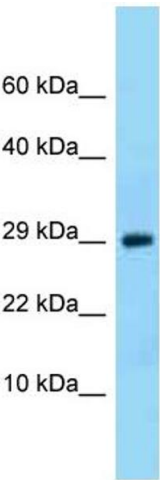
## Handling

Format:	Liquid
Concentration:	Lot specific
Buffer:	Liquid. Purified antibody supplied in 1x PBS buffer with 0.09 % (w/v) sodium azide and 2 % sucrose.
Preservative:	Sodium azide
Precaution of Use:	This product contains Sodium azide: a POISONOUS AND HAZARDOUS SUBSTANCE which should be handled by trained staff only.
Handling Advice:	Avoid repeated freeze-thaw cycles.
Storage:	-20 °C
Storage Comment:	For short term use, store at 2-8°C up to 1 week. For long term storage, store at -20°C in small aliquots to prevent freeze-thaw cycles.



**Western Blotting**

**Image 1.** Host: Rat Target Name: NTF3 Sample Tissue: Rat Skeletal Muscle Antibody Dilution: 1 ug/ml



**Western Blotting**

**Image 2.** WB Suggested Anti-Ntf3 Antibody Titration: 1.0 ug/ml Positive Control: Rat Brain