

Datasheet for ABIN2786669
anti-PCOLCE antibody (Middle Region)



[Go to Product page](#)

1 Image

Overview

Quantity:	100 µL
Target:	PCOLCE
Binding Specificity:	Middle Region
Reactivity:	Human, Mouse, Rat, Dog, Cow, Guinea Pig, Horse, Zebrafish (Danio rerio)
Host:	Rabbit
Clonality:	Polyclonal
Conjugate:	This PCOLCE antibody is un-conjugated
Application:	Western Blotting (WB)

Product Details

Immunogen:	The immunogen is a synthetic peptide directed towards the middle region of human PCOLCE
Sequence:	LLVQFVSDLS VTADGFSASY KTLPRGTAKG GQGPGRPGRGT EPKVKLPKKS
Predicted Reactivity:	Cow: 100%, Dog: 100%, Guinea Pig: 100%, Horse: 100%, Human: 100%, Mouse: 100%, Rat: 100%, Zebrafish: 86%
Characteristics:	This is a rabbit polyclonal antibody against PCOLCE. It was validated on Western Blot using a cell lysate as a positive control.
Purification:	Affinity Purified

Target Details

Target:	PCOLCE
---------	--------

Target Details

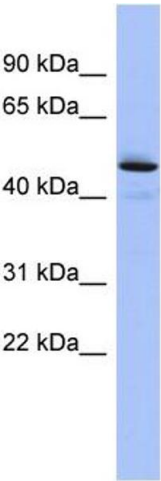
Alternative Name:	PCOLCE (PCOLCE Products)
Background:	<p>PCOLCE binds to the C-terminal propeptide of type I procollagen and enhances procollagen C-proteinase activity.</p> <p>Alias Symbols: PCPE, PCPE1, PCPE-1</p> <p>Protein Interaction Partner: ECT2, PLG, COL3A1, COL2A1,</p> <p>Protein Size: 449</p>
Molecular Weight:	48 kDa
Gene ID:	5118
NCBI Accession:	NM_002593 , NP_002584
UniProt:	Q15113

Application Details

Application Notes:	Optimal working dilutions should be determined experimentally by the investigator.
Comment:	Antigen size: 449 AA
Restrictions:	For Research Use only

Handling

Format:	Liquid
Concentration:	Lot specific
Buffer:	Liquid. Purified antibody supplied in 1x PBS buffer with 0.09 % (w/v) sodium azide and 2 % sucrose.
Preservative:	Sodium azide
Precaution of Use:	This product contains Sodium azide: a POISONOUS AND HAZARDOUS SUBSTANCE which should be handled by trained staff only.
Handling Advice:	Avoid repeated freeze-thaw cycles.
Storage:	-20 °C
Storage Comment:	For short term use, store at 2-8°C up to 1 week. For long term storage, store at -20°C in small aliquots to prevent freeze-thaw cycles.



Western Blotting

Image 1. WB Suggested Anti-PCOLCE Antibody Titration:

0.2-1 ug/ml

ELISA Titer: 1:312500

Positive Control: Human Liver