

Datasheet for ABIN2786678  
**anti-PI4KB antibody (Middle Region)**[Go to Product page](#)

## 2 Images

## Overview

Quantity:	100 µL
Target:	PI4KB
Binding Specificity:	Middle Region
Reactivity:	Human, Mouse, Rat, Zebrafish (Danio rerio), Rabbit, Dog, Horse, Cow, Guinea Pig
Host:	Rabbit
Clonality:	Polyclonal
Conjugate:	This PI4KB antibody is un-conjugated
Application:	Western Blotting (WB), Immunohistochemistry (IHC)

## Product Details

Immunogen:	The immunogen is a synthetic peptide directed towards the middle region of human PI4KB
Sequence:	HMDKVVQIVE IMQGSQQLPC FHGSSTIRNL KERFHMSMTE EQLQLLVEQM
Predicted Reactivity:	Cow: 100%, Dog: 100%, Guinea Pig: 100%, Horse: 100%, Human: 100%, Mouse: 100%, Rabbit: 100%, Rat: 100%, Zebrafish: 100%
Characteristics:	This is a rabbit polyclonal antibody against PI4KB. It was validated on Western Blot.
Purification:	Affinity Purified

## Target Details

Target:	PI4KB
Alternative Name:	PI4KB ( <a href="#">PI4KB Products</a> )

## Target Details

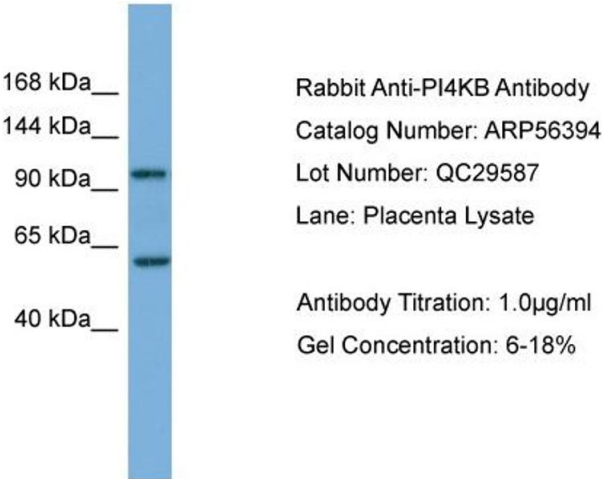
Background:	<p>Phosphorylates phosphatidylinositol (PI) in the first committed step in the production of the second messenger inositol-1,4,5,-trisphosphate (PIP). PI4KB may regulate Golgi disintegration/reorganization during mitosis, possibly via its phosphorylation. Involved in Golgi-to-plasma membrane trafficking.</p> <p>Alias Symbols: NPIK, PI4K-BETA, PI4K92, PI4KBETA, PI4KIIIBETA, PIK4CB</p> <p>Protein Interaction Partner: YWHAB, MYC, YWHAG, YWHAQ, KBTBD7, NCS1, SFN,</p> <p>Protein Size: 828</p>
Molecular Weight:	93 kDa
Gene ID:	5298
NCBI Accession:	<a href="#">NM_002651</a> , <a href="#">NP_002642</a>
UniProt:	<a href="#">Q9UBF8</a>
Pathways:	<a href="#">Inositol Metabolic Process</a>

## Application Details

Application Notes:	Optimal working dilutions should be determined experimentally by the investigator.
Comment:	Antigen size: 828 AA
Restrictions:	For Research Use only

## Handling

Format:	Liquid
Concentration:	Lot specific
Buffer:	Liquid. Purified antibody supplied in 1x PBS buffer with 0.09 % (w/v) sodium azide and 2 % sucrose.
Preservative:	Sodium azide
Precaution of Use:	This product contains Sodium azide: a POISONOUS AND HAZARDOUS SUBSTANCE which should be handled by trained staff only.
Handling Advice:	Avoid repeated freeze-thaw cycles.
Storage:	-20 °C
Storage Comment:	For short term use, store at 2-8°C up to 1 week. For long term storage, store at -20°C in small aliquots to prevent freeze-thaw cycles.

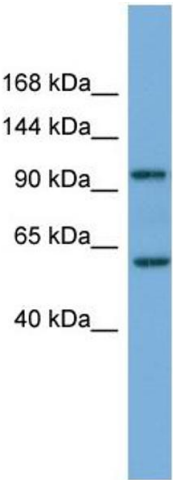


**Western Blotting**

**Image 1.** WB Suggested Anti-PI4KB

Antibody Titration: 0.2-1 µg/mL ELISA Titer: 1:1562500

Positive Control: Human Placenta



**Western Blotting**

**Image 2. WB Suggested Anti-PI4KB Antibody Titration:**

0.2-1 ug/ml

**ELISA Titer:** 1:1562500

**Positive Control:** Human Placenta