

Datasheet for ABIN2786681
anti-PMM1 antibody (N-Term)[Go to Product page](#)

1 Image

Overview

Quantity:	100 µL
Target:	PMM1
Binding Specificity:	N-Term
Reactivity:	Human, Mouse, Rat, Cow, Guinea Pig, Horse, Rabbit, Saccharomyces cerevisiae, Zebrafish (Danio rerio)
Host:	Rabbit
Clonality:	Polyclonal
Conjugate:	This PMM1 antibody is un-conjugated
Application:	Western Blotting (WB)

Product Details

Immunogen:	The immunogen is a synthetic peptide directed towards the N terminal region of human PMM1
Sequence:	MAVTAQAARR KERVLCFLDV DGTLPARQK IDPEVAAFLQ KLRSRVQIGV
Predicted Reactivity:	Cow: 100%, Guinea Pig: 100%, Horse: 100%, Human: 100%, Mouse: 100%, Rabbit: 100%, Rat: 100%, Yeast: 86%, Zebrafish: 79%
Characteristics:	This is a rabbit polyclonal antibody against PMM1. It was validated on Western Blot using a cell lysate as a positive control.
Purification:	Affinity Purified

Target Details

Target:	PMM1
---------	------

Target Details

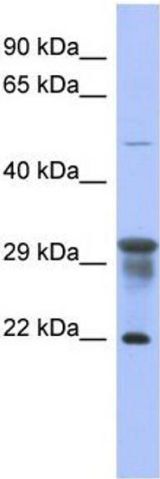
Alternative Name:	PMM1 (PMM1 Products)
Background:	<p>Phosphomannomutase catalyzes the conversion between D-mannose 6-phosphate and D-mannose 1-phosphate which is a substrate for GDP-mannose synthesis. GDP-mannose is used for synthesis of dolichol-phosphate-mannose, which is essential for N-linked glycosylation.</p> <p>Alias Symbols: Sec53</p> <p>Protein Interaction Partner: RAB6A, UBC, RCHY1, CACNA1A,</p> <p>Protein Size: 262</p>
Molecular Weight:	30 kDa
Gene ID:	5372
NCBI Accession:	NM_002676 , NP_002667
UniProt:	Q92871

Application Details

Application Notes:	Optimal working dilutions should be determined experimentally by the investigator.
Comment:	Antigen size: 262 AA
Restrictions:	For Research Use only

Handling

Format:	Liquid
Concentration:	Lot specific
Buffer:	Liquid. Purified antibody supplied in 1x PBS buffer with 0.09 % (w/v) sodium azide and 2 % sucrose.
Preservative:	Sodium azide
Precaution of Use:	This product contains Sodium azide: a POISONOUS AND HAZARDOUS SUBSTANCE which should be handled by trained staff only.
Handling Advice:	Avoid repeated freeze-thaw cycles.
Storage:	-20 °C
Storage Comment:	For short term use, store at 2-8°C up to 1 week. For long term storage, store at -20°C in small aliquots to prevent freeze-thaw cycles.



Western Blotting

Image 1. WB Suggested Anti-PMM1 Antibody Titration:

0.2-1 ug/ml

ELISA Titer: 1:312500

Positive Control: 293T cell lysate