

Datasheet for ABIN2786686
anti-PPP2R3A antibody (N-Term)[Go to Product page](#)

2 Images

Overview

Quantity:	100 µL
Target:	PPP2R3A
Binding Specificity:	N-Term
Reactivity:	Human, Mouse, Rat, Horse, Rabbit, Guinea Pig, Cow, Dog
Host:	Rabbit
Clonality:	Polyclonal
Conjugate:	This PPP2R3A antibody is un-conjugated
Application:	Western Blotting (WB), Immunohistochemistry (IHC)

Product Details

Immunogen:	The immunogen is a synthetic peptide directed towards the N terminal region of human PPP2R3A
Sequence:	SSSVEEKPLS HRNSLDTNLT SMFLQNFSEE DLVTQILEKH KIDNFSSGTD
Predicted Reactivity:	Cow: 86%, Dog: 93%, Guinea Pig: 86%, Horse: 86%, Human: 100%, Mouse: 93%, Rabbit: 93%, Rat: 92%
Characteristics:	This is a rabbit polyclonal antibody against PPP2R3A. It was validated on Western Blot using a cell lysate as a positive control.
Purification:	Affinity Purified

Target Details

Target:	PPP2R3A
---------	---------

Target Details

Alternative Name:	PPP2R3A (PPP2R3A Products)
Background:	<p>Protein phosphatase 2 (formerly named type 2A) is one of the four major Ser/Thr phosphatases and is implicated in the negative control of cell growth and division. Protein phosphatase 2 holoenzymes are heterotrimeric proteins composed of a structural subu</p> <p>Alias Symbols: PPP2R3, PR130, PR72</p> <p>Protein Interaction Partner: ATXN7L2, EGFR, PPP2R3A, AKAP9, CDC6, PPP5C, HMGB1, RBL1, PPP2R4, PPP2CA,</p> <p>Protein Size: 1150</p>
Molecular Weight:	130 kDa
Gene ID:	5523
NCBI Accession:	NM_002718 , NP_002709
UniProt:	Q06190
Pathways:	PI3K-Akt Signaling

Application Details

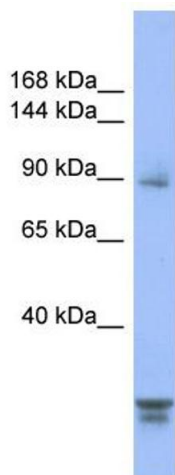
Application Notes:	Optimal working dilutions should be determined experimentally by the investigator.
Comment:	Antigen size: 1150 AA
Restrictions:	For Research Use only

Handling

Format:	Liquid
Concentration:	Lot specific
Buffer:	Liquid. Purified antibody supplied in 1x PBS buffer with 0.09 % (w/v) sodium azide and 2 % sucrose.
Preservative:	Sodium azide
Precaution of Use:	This product contains Sodium azide: a POISONOUS AND HAZARDOUS SUBSTANCE which should be handled by trained staff only.
Handling Advice:	Avoid repeated freeze-thaw cycles.
Storage:	-20 °C
Storage Comment:	For short term use, store at 2-8°C up to 1 week. For long term storage, store at -20°C in small

aliquots to prevent freeze-thaw cycles.

Images



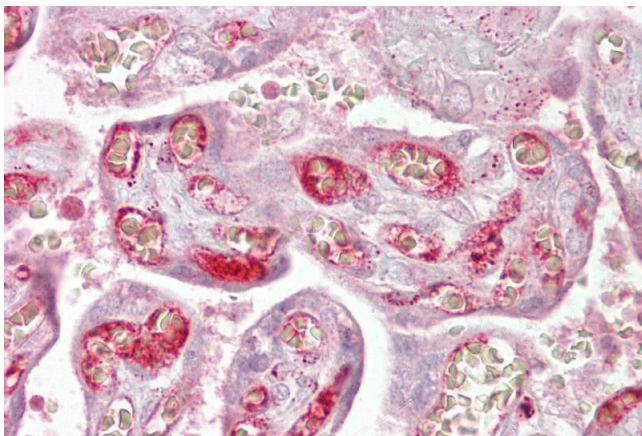
Western Blotting

Image 1. WB Suggested Anti-PPP2R3A Antibody Titration:

0.2-1 ug/ml

ELISA Titer: 1:62500

Positive Control: 293T cell lysate



Immunohistochemistry

Image 2. Immunohistochemistry with Placenta tissue at an antibody concentration of 5µg/ml using anti-PPP2R3A antibody (ARP56410_P050)