

Datasheet for ABIN2786694

## anti-Pkc beta 1 antibody (N-Term)



[Go to Product page](#)

### 1 Image

#### Overview

Quantity:	100 µL
Target:	Pkc beta 1
Binding Specificity:	N-Term
Reactivity:	Rat, Human, Mouse, Rabbit, Cow, Dog, Guinea Pig, Horse, Zebrafish (Danio rerio)
Host:	Rabbit
Clonality:	Polyclonal
Conjugate:	This Pkc beta 1 antibody is un-conjugated
Application:	Western Blotting (WB)

#### Product Details

Immunogen:	The immunogen is a synthetic peptide directed towards the N terminal region of human PRKCB1
Sequence:	CFVVKRCHE FVTFSCPGAD KGPASDDPRS KHKFKIHTYS SPTFCDHCGS
Predicted Reactivity:	Cow: 100%, Dog: 100%, Guinea Pig: 100%, Horse: 77%, Human: 100%, Mouse: 100%, Rabbit: 100%, Rat: 100%, Zebrafish: 100%
Characteristics:	This is a rabbit polyclonal antibody against PRKCB1. It was validated on Western Blot using a cell lysate as a positive control.
Purification:	Affinity Purified

#### Target Details

Target:	Pkc beta 1
---------	------------

## Target Details

Alternative Name:	PRKCB1 ( <a href="#">Pkc beta 1 Products</a> )
Background:	<p>Protein kinase C (PKC) is a family of serine- and threonine-specific protein kinases that can be activated by calcium and second messenger diacylglycerol. PKC family members phosphorylate a wide variety of protein targets and are known to be involved in d</p> <p>Alias Symbols: MGC41878, PKC-beta, PKCB, PRKCB, PRKCB2, PRKCB1</p> <p>Protein Interaction Partner: UBC, GNB2L1, MBP, NUMB, PRKCD, MARCKS, LYN, HIST1H1B, SYT6, RB1, PRKCB, TNFRSF1A, PPP2R4, PPP1CA, ITGB2, HSP90AA1, GSK3A, FN1, CASR, RASGRP3, SDC2, CARD11, LMNB1, H1FO, LSP1, HIST1H1A, NCF1, RBCK1, TOP2A, IBTK, KCNA5, RNF31, TERF1, TINF2, EGFR, TRIM41, DD</p> <p>Protein Size: 673</p>
Molecular Weight:	77 kDa
Gene ID:	5579
NCBI Accession:	<a href="#">NM_002738</a> , <a href="#">NP_002729</a>
UniProt:	<a href="#">P05771</a>

## Application Details

Application Notes:	Optimal working dilutions should be determined experimentally by the investigator.
Comment:	Antigen size: 673 AA
Restrictions:	For Research Use only

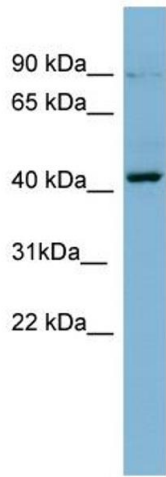
## Handling

Format:	Liquid
Concentration:	Lot specific
Buffer:	Liquid. Purified antibody supplied in 1x PBS buffer with 0.09 % (w/v) sodium azide and 2 % sucrose.
Preservative:	Sodium azide
Precaution of Use:	This product contains Sodium azide: a POISONOUS AND HAZARDOUS SUBSTANCE which should be handled by trained staff only.
Handling Advice:	Avoid repeated freeze-thaw cycles.
Storage:	-20 °C

Handling

Storage Comment: For short term use, store at 2-8°C up to 1 week. For long term storage, store at -20°C in small aliquots to prevent freeze-thaw cycles.

Images



Western Blotting

**Image 1. WB Suggested Anti-PRKCB1 Antibody Titration:**

0.2-1 ug/ml

**ELISA Titer:** 1:1562500

**Positive Control:** NCI-H226 cell lysate