

Datasheet for ABIN2786700

**anti-MAPK6 antibody (Middle Region)**[Go to Product page](#)**2** Images

## Overview

Quantity:	100 µL
Target:	MAPK6
Binding Specificity:	Middle Region
Reactivity:	Human, Mouse, Rat, Cow, Dog, Horse, Rabbit, Guinea Pig, Zebrafish (Danio rerio)
Host:	Rabbit
Clonality:	Polyclonal
Conjugate:	This MAPK6 antibody is un-conjugated
Application:	Western Blotting (WB)

## Product Details

Immunogen:	The immunogen is a synthetic peptide directed towards the middle region of human MAPK6
Sequence:	QVDPRKYLDG DREKYLEDDPA FDTNYSTEPD WQYSDHHENK YCDLECSHTC
Predicted Reactivity:	Cow: 100%, Dog: 100%, Guinea Pig: 100%, Horse: 100%, Human: 100%, Mouse: 100%, Rabbit: 100%, Rat: 100%, Zebrafish: 79%
Characteristics:	This is a rabbit polyclonal antibody against MAPK6. It was validated on Western Blot.
Purification:	Affinity Purified

## Target Details

Target:	MAPK6
Alternative Name:	MAPK6 ( <a href="#">MAPK6 Products</a> )

## Target Details

Background:	<p>The protein encoded by this gene is a member of the Ser/Thr protein kinase family, and is most closely related to mitogen-activated protein kinases (MAP kinases). MAP kinases also known as extracellular signal-regulated kinases (ERKs), are activated through protein phosphorylation cascades and act as integration points for multiple biochemical signals. This kinase is localized in the nucleus, and has been reported to be activated in fibroblasts upon treatment with serum or phorbol esters.</p> <p>Alias Symbols: DKFZp686F03189, ERK3, HsT17250, PRKM6, p97MAPK</p> <p>Protein Interaction Partner: MAPKAPK5, AURKA, HERC2, NEURL4, PSMA7, MAPK6, A2M, EIF2S3, EGLN3, vif, GALNT7, MBIP, SLC20A1, JUNB, KDSR, CCND3, ELAVL1, UBE3A, UBC, FOXO3, EMD, EIF4A1, EEF1A2, PHC2, DKC1, DDOST, DBN1, CNTN1, CFL1, CDH13, CASP6, CALR, DDR1, CA12, CA1, ATP5J, ARHGDIA, APO</p> <p>Protein Size: 721</p>
Molecular Weight:	83 kDa
Gene ID:	5597
NCBI Accession:	<a href="#">NM_002748</a> , <a href="#">NP_002739</a>
UniProt:	<a href="#">Q16659</a>
Pathways:	<a href="#">MAPK Signaling</a> , <a href="#">Neurotrophin Signaling Pathway</a> , <a href="#">Regulation of Muscle Cell Differentiation</a> , <a href="#">Hepatitis C</a>

## Application Details

Application Notes:	Optimal working dilutions should be determined experimentally by the investigator.
Comment:	Antigen size: 721 AA
Restrictions:	For Research Use only

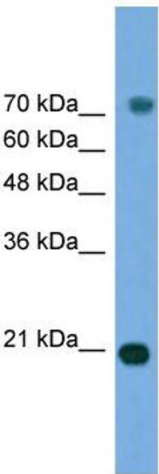
## Handling

Format:	Liquid
Concentration:	Lot specific
Buffer:	Liquid. Purified antibody supplied in 1x PBS buffer with 0.09 % (w/v) sodium azide and 2 % sucrose.
Preservative:	Sodium azide
Precaution of Use:	This product contains Sodium azide: a POISONOUS AND HAZARDOUS SUBSTANCE which

Handling

	should be handled by trained staff only.
Handling Advice:	Avoid repeated freeze-thaw cycles.
Storage:	-20 °C
Storage Comment:	For short term use, store at 2-8°C up to 1 week. For long term storage, store at -20°C in small aliquots to prevent freeze-thaw cycles.

Images



Western Blotting

**Image 1. WB Suggested Anti-MAPK6 Antibody Titration:**

0.2-1 ug/ml

**ELISA Titer:** 1:1562500

**Positive Control:** Transfected 293T



Rabbit Anti-MAPK6 Antibody  
Catalog Number: ARP56436  
Lot Number: QC27456  
Lane: Transfected 293T Cell Lysate

Antibody Titration: 1.0µg/ml  
Gel Concentration: 12%

Western Blotting

**Image 2.** WB Suggested Anti-MAPK6

Antibody Titration: 0.2-1 µg/mL ELISA Titer: 1:1562500

Positive Control: Transfected 293T