

Datasheet for ABIN2786709
anti-PRSS8 antibody (Middle Region)[Go to Product page](#)

2 Images

Overview

Quantity:	100 µL
Target:	PRSS8
Binding Specificity:	Middle Region
Reactivity:	Human, Rat, Mouse, Guinea Pig, Rabbit, Cow, Dog, Horse
Host:	Rabbit
Clonality:	Polyclonal
Conjugate:	This PRSS8 antibody is un-conjugated
Application:	Western Blotting (WB)

Product Details

Immunogen:	The immunogen is a synthetic peptide directed towards the middle region of human PRSS8
Sequence:	PITFSRYIRP ICLPAANASF PNGLHCTVTG WGHVAPSVSL LTPKPLQQLE
Predicted Reactivity:	Cow: 92%, Dog: 92%, Guinea Pig: 100%, Horse: 92%, Human: 100%, Mouse: 100%, Rabbit: 100%, Rat: 100%
Characteristics:	This is a rabbit polyclonal antibody against PRSS8. It was validated on Western Blot.
Purification:	Affinity Purified

Target Details

Target:	PRSS8
Alternative Name:	PRSS8 (PRSS8 Products)

Target Details

Background:	<p>This gene encodes a trypsinogen, which is a member of the trypsin family of serine proteases. This enzyme is highly expressed in prostate epithelia and is one of several proteolytic enzymes found in seminal fluid. The proprotein is cleaved to produce a light chain and a heavy chain which are associated by a disulfide bond. It is active on peptide linkages involving the carboxyl group of lysine or arginine.</p> <p>Alias Symbols: CAP1, PROSTASIN</p> <p>Protein Interaction Partner: ATF7IP,</p> <p>Protein Size: 343</p>
-------------	---

Molecular Weight:	33 kDa
-------------------	--------

Gene ID:	5652
----------	------

NCBI Accession:	NM_002773 , NP_002764
-----------------	---

UniProt:	Q16651
----------	------------------------

Application Details

Application Notes:	Optimal working dilutions should be determined experimentally by the investigator.
--------------------	--

Comment:	Antigen size: 343 AA
----------	----------------------

Restrictions:	For Research Use only
---------------	-----------------------

Handling

Format:	Liquid
---------	--------

Concentration:	Lot specific
----------------	--------------

Buffer:	Liquid. Purified antibody supplied in 1x PBS buffer with 0.09 % (w/v) sodium azide and 2 % sucrose.
---------	---

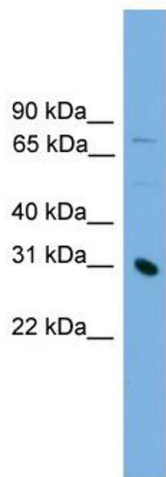
Preservative:	Sodium azide
---------------	--------------

Precaution of Use:	This product contains Sodium azide: a POISONOUS AND HAZARDOUS SUBSTANCE which should be handled by trained staff only.
--------------------	--

Handling Advice:	Avoid repeated freeze-thaw cycles.
------------------	------------------------------------

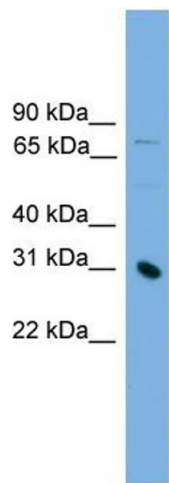
Storage:	-20 °C
----------	--------

Storage Comment:	For short term use, store at 2-8°C up to 1 week. For long term storage, store at -20°C in small aliquots to prevent freeze-thaw cycles.
------------------	---



Western Blotting

Image 1. WB Suggested Anti-PRSS8 Antibody Titration:
0.2-1 ug/ml
ELISA Titer: 1:1562500
Positive Control: Jurkat cell lysate



Rabbit Anti-PRSS8 Antibody
Catalog Number: ARP56449
Lot Number: QC29058
Lane: Jurkat Cell Lysate

Antibody Titration: 1.0µg/ml
Gel Concentration: 12%

Western Blotting

Image 2. WB Suggested Anti-PRSS8
Antibody Titration: 0.2-1 µg/mL ELISA Titer: 1:1562500
Positive Control: Jurkat cell lysate