



Datasheet for ABIN2786713
anti-PSMA5 antibody (Middle Region)



[Go to Product page](#)

2 Images

Overview

Quantity:	100 µL
Target:	PSMA5
Binding Specificity:	Middle Region
Reactivity:	Human, Mouse, Rat, Cow, Zebrafish (Danio rerio), Rabbit, Guinea Pig, Horse, Saccharomyces cerevisiae, Dog
Host:	Rabbit
Clonality:	Polyclonal
Conjugate:	This PSMA5 antibody is un-conjugated
Application:	Western Blotting (WB)

Product Details

Immunogen:	The immunogen is a synthetic peptide directed towards the middle region of human PSMA5
Sequence:	FGGVDEKGPQ LFHMDPSGTF VQCDARAIGS ASEGAQSSLQ EVYHKSMTLK
Predicted Reactivity:	Cow: 100%, Dog: 100%, Guinea Pig: 100%, Horse: 100%, Human: 100%, Mouse: 100%, Rabbit: 100%, Rat: 100%, Yeast: 86%, Zebrafish: 100%
Characteristics:	This is a rabbit polyclonal antibody against PSMA5. It was validated on Western Blot using a cell lysate as a positive control.
Purification:	Affinity Purified

Target Details

Target:	PSMA5
---------	-------

Target Details

Alternative Name:	PSMA5 (PSMA5 Products)
Background:	<p>The proteasome is a multicatalytic proteinase complex with a highly ordered ring-shaped 20S core structure. The core structure is composed of 4 rings of 28 non-identical subunits, 2 rings are composed of 7 alpha subunits and 2 rings are composed of 7 beta</p> <p>Alias Symbols: MGC117302, MGC125802, MGC125803, MGC125804, PSC5, ZETA</p> <p>Protein Interaction Partner: HUWE1, UBC, AURKA, PSMD14, MDM2, PSMB4, PSEN1, PSMA6, PSMG3, POMP, PSMG1, PSME4, RPP38, SART3, VASP, KIF5B, HNRNPA2B1, EPB41L1, DDB2, DARS, CAST, PSMB8, PSMB7, PSMB6, PSMB5, PSMB3, PSMB2, PSMB1, PSMA7, PSMA4, PSMA3, PSMA1, PSMA2, PARK2, BAG3, NOS2, FN1, I</p> <p>Protein Size: 241</p>
Molecular Weight:	26 kDa
Gene ID:	5686
NCBI Accession:	NM_002790 , NP_002781
UniProt:	P28066
Pathways:	Mitotic G1-G1/S Phases , DNA Replication , Synthesis of DNA

Application Details

Application Notes:	Optimal working dilutions should be determined experimentally by the investigator.
Comment:	Antigen size: 241 AA
Restrictions:	For Research Use only

Handling

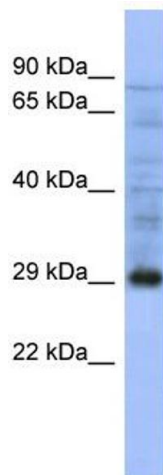
Format:	Liquid
Concentration:	Lot specific
Buffer:	Liquid. Purified antibody supplied in 1x PBS buffer with 0.09 % (w/v) sodium azide and 2 % sucrose.
Preservative:	Sodium azide
Precaution of Use:	This product contains Sodium azide: a POISONOUS AND HAZARDOUS SUBSTANCE which should be handled by trained staff only.
Handling Advice:	Avoid repeated freeze-thaw cycles.

Handling

Storage: -20 °C

Storage Comment: For short term use, store at 2-8°C up to 1 week. For long term storage, store at -20°C in small aliquots to prevent freeze-thaw cycles.

Images



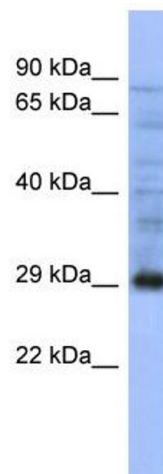
Western Blotting

Image 1. WB Suggested Anti-PSMA5 Antibody Titration:

0.2-1 ug/ml

ELISA Titer: 1:312500

Positive Control: Jurkat cell lysate



Western Blotting

Image 2. WB Suggested Anti-PSMA5

Antibody Titration: 0.2-1 µg/mL ELISA Titer: 1:12500

Positive Control: Jurkat cell lysate

PSMA5 is supported by BioGPS gene expression data to be expressed in Jurkat