

Datasheet for ABIN2786714
anti-PSMB1 antibody (Middle Region)[1 Image](#)[1 Publication](#)[Go to Product page](#)

Overview

Quantity:	100 µL
Target:	PSMB1
Binding Specificity:	Middle Region
Reactivity:	Human, Mouse, Rat, Rabbit, Saccharomyces cerevisiae, Cow, Dog, Guinea Pig, Horse, Zebrafish (Danio rerio)
Host:	Rabbit
Clonality:	Polyclonal
Conjugate:	This PSMB1 antibody is un-conjugated
Application:	Western Blotting (WB)

Product Details

Immunogen:	The immunogen is a synthetic peptide directed towards the middle region of human PSMB1
Sequence:	NNKAMTTGAI AAMLSTILYS RRFPPYYVYN IIGGLDEEGK GAVYSFDPVG
Predicted Reactivity:	Cow: 100%, Dog: 100%, Guinea Pig: 100%, Horse: 100%, Human: 100%, Mouse: 100%, Rabbit: 100%, Rat: 100%, Yeast: 93%, Zebrafish: 93%
Characteristics:	This is a rabbit polyclonal antibody against PSMB1. It was validated on Western Blot using a cell lysate as a positive control.
Purification:	Affinity Purified

Target Details

Target:	PSMB1
---------	-------

Target Details

Alternative Name: PSMB1 ([PSMB1 Products](#))

Background: The proteasome is a multicatalytic proteinase complex with a highly ordered ring-shaped 20S core structure. The core structure is composed of 4 rings of 28 non-identical subunits, 2 rings are composed of 7 alpha subunits and 2 rings are composed of 7 beta subunits. Proteasomes are distributed throughout eukaryotic cells at a high concentration and cleave peptides in an ATP/ubiquitin-dependent process in a non-lysosomal pathway. An essential function of a modified proteasome, the immunoproteasome, is the processing of class I MHC peptides. PSMB1 is a member of the proteasome B-type family, also known as the T1B family, that is a 20S core beta subunit. This gene is tightly linked to the TBP (TATA-binding protein) gene in human and in mouse, and is transcribed in the opposite orientation in both species. The proteasome is a multicatalytic proteinase complex with a highly ordered ring-shaped 20S core structure. The core structure is composed of 4 rings of 28 non-identical subunits, 2 rings are composed of 7 alpha subunits and 2 rings are composed of 7 beta subunits. Proteasomes are distributed throughout eukaryotic cells at a high concentration and cleave peptides in an ATP/ubiquitin-dependent process in a non-lysosomal pathway. An essential function of a modified proteasome, the immunoproteasome, is the processing of class I MHC peptides. This gene encodes a member of the proteasome B-type family, also known as the T1B family, that is a 20S core beta subunit. This gene is tightly linked to the TBP (TATA-binding protein) gene in human and in mouse, and is transcribed in the opposite orientation in both species. Publication Note: This RefSeq record includes a subset of the publications that are available for this gene. Please see the Entrez Gene record to access additional publications.

Alias Symbols: FLJ25321, HC5, KIAA1838, PMSB1, PSC5

Protein Interaction Partner: MAPRE3, UBC, TRAF1, TRIM27, KRT15, KRT13, KIFC3, CDKN1B, PSMA7, HAUS2, PSMD14, PSEN1, PSMG3, PSMB8, PSMB7, PSMB6, PSMB5, PSMB4, PSMB3, PSMB2, PSMA6, PSMA5, PSMA4, PSMA3, PSMA1, HNRNPA2B1, DDB2, SMEK1, AP3M1, PSME4, RPP38, RPP30, SEC13, PYCRL, HECW2, PSMA2

Protein Size: 241

Molecular Weight: 26 kDa

Gene ID: 5689

NCBI Accession: [NM_002793](#), [NP_002784](#)

UniProt: [P20618](#)

Pathways: [Mitotic G1-G1/S Phases](#), [DNA Replication](#), [Synthesis of DNA](#)

Application Details

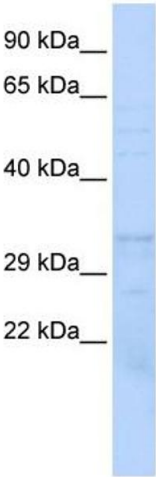
Application Notes:	Optimal working dilutions should be determined experimentally by the investigator.
Comment:	Antigen size: 241 AA
Restrictions:	For Research Use only

Handling

Format:	Liquid
Concentration:	Lot specific
Buffer:	Liquid. Purified antibody supplied in 1x PBS buffer with 0.09 % (w/v) sodium azide and 2 % sucrose.
Preservative:	Sodium azide
Precaution of Use:	This product contains Sodium azide: a POISONOUS AND HAZARDOUS SUBSTANCE which should be handled by trained staff only.
Handling Advice:	Avoid repeated freeze-thaw cycles.
Storage:	-20 °C
Storage Comment:	For short term use, store at 2-8°C up to 1 week. For long term storage, store at -20°C in small aliquots to prevent freeze-thaw cycles.

Publications

Product cited in:	Ewing, Chu, Elisma, Li, Taylor, Climie, McBroom-Cerajewski, Robinson, OConnor, Li, Taylor, Dharsee, Ho, Heilbut, Moore, Zhang, Ornatsky, Bukhman, Ethier, Sheng, Vasilescu, Abu-Farha, Lambert, Duewel et al.: "Large-scale mapping of human protein-protein interactions by mass spectrometry. ..." in: Molecular systems biology , Vol. 3, pp. 89, (2007) (PubMed).
-------------------	--



Western Blotting

Image 1. WB Suggested Anti-PSMB1 Antibody Titration:

0.2-1 ug/ml

ELISA Titer: 1:312500

Positive Control: 721_B cell lysate