

Datasheet for ABIN2786722

anti-PSMB10 antibody (Middle Region)



[Go to Product page](#)

1 Image

Overview

Quantity:	100 µL
Target:	PSMB10
Binding Specificity:	Middle Region
Reactivity:	Human, Mouse, Rat, Cow, Dog, Pig, Guinea Pig, Horse, Rabbit
Host:	Rabbit
Clonality:	Polyclonal
Conjugate:	This PSMB10 antibody is un-conjugated
Application:	Western Blotting (WB)

Product Details

Immunogen:	The immunogen is a synthetic peptide directed towards the middle region of human PSMB10
Sequence:	DLTGPLYGV HPHGSYSRLP FTALGSGQDA ALAVLEDRFQ PNMTLEAAQG
Predicted Reactivity:	Cow: 100%, Dog: 100%, Guinea Pig: 93%, Horse: 93%, Human: 100%, Mouse: 100%, Pig: 100%, Rabbit: 93%, Rat: 100%
Characteristics:	This is a rabbit polyclonal antibody against PSMB10. It was validated on Western Blot using a cell lysate as a positive control.
Purification:	Affinity Purified

Target Details

Target:	PSMB10
---------	--------

Target Details

Alternative Name:	PSMB10 (PSMB10 Products)
Background:	<p>The proteasome is a multicatalytic proteinase complex with a highly ordered ring-shaped 20S core structure. The core structure is composed of 4 rings of 28 non-identical subunits, 2 rings are composed of 7 alpha subunits and 2 rings are composed of 7 beta</p> <p>Alias Symbols: LMP10, MECL1, MGC1665, beta2i</p> <p>Protein Interaction Partner: CCNDBP1, UBC, MEOX2, CRX, PSMA2, PSMD6, PSMB6, PSMB5, PSMB4, PSMB3, PSMB1, PSME2, PSME1, POMP, PSMB8, PSMA3, PSMA1, tat, ANXA7, PSMB9, PTN,</p> <p>Protein Size: 273</p>
Molecular Weight:	25 kDa
Gene ID:	5699
NCBI Accession:	NM_002801 , NP_002792
UniProt:	P40306
Pathways:	Mitotic G1-G1/S Phases , DNA Replication , Synthesis of DNA

Application Details

Application Notes:	Optimal working dilutions should be determined experimentally by the investigator.
Comment:	Antigen size: 273 AA
Restrictions:	For Research Use only

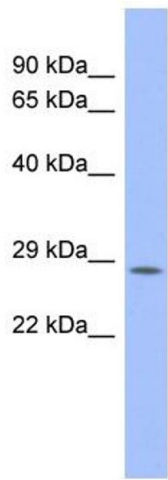
Handling

Format:	Liquid
Concentration:	Lot specific
Buffer:	Liquid. Purified antibody supplied in 1x PBS buffer with 0.09 % (w/v) sodium azide and 2 % sucrose.
Preservative:	Sodium azide
Precaution of Use:	This product contains Sodium azide: a POISONOUS AND HAZARDOUS SUBSTANCE which should be handled by trained staff only.
Handling Advice:	Avoid repeated freeze-thaw cycles.
Storage:	-20 °C

Handling

Storage Comment: For short term use, store at 2-8°C up to 1 week. For long term storage, store at -20°C in small aliquots to prevent freeze-thaw cycles.

Images



Western Blotting

Image 1. WB Suggested Anti-PSMB10 Antibody Titration:

0.2-1 ug/ml

ELISA Titer: 1:1562500

Positive Control: Human Placenta