

Datasheet for ABIN2786725
anti-PSMD1 antibody (N-Term)[Go to Product page](#)

1 Image

1 Publication

Overview

Quantity:	100 µL
Target:	PSMD1
Binding Specificity:	N-Term
Reactivity:	Human, Mouse, Rat, Cow, Dog, Horse, Zebrafish (Danio rerio), Rabbit, Guinea Pig, Pig
Host:	Rabbit
Clonality:	Polyclonal
Conjugate:	This PSMD1 antibody is un-conjugated
Application:	Western Blotting (WB)

Product Details

Immunogen:	The immunogen is a synthetic peptide directed towards the N terminal region of human PSMD1
Sequence:	DLYESASQQF LSSVIQNLRT VGTPIASVPG STNTGTVPGS EKDSDSMETE
Predicted Reactivity:	Cow: 86%, Dog: 100%, Guinea Pig: 93%, Horse: 100%, Human: 100%, Mouse: 100%, Pig: 100%, Rabbit: 93%, Rat: 100%, Zebrafish: 79%
Characteristics:	This is a rabbit polyclonal antibody against PSMD1. It was validated on Western Blot using a cell lysate as a positive control.
Purification:	Affinity Purified

Target Details

Target:	PSMD1
---------	-------

Target Details

Alternative Name:	PSMD1 (PSMD1 Products)
Background:	<p>The 26S proteasome is a multicatalytic proteinase complex with a highly ordered structure composed of 2 complexes, a 20S core and a 19S regulator. The 20S core is composed of 4 rings of 28 non-identical subunits, 2 rings are composed of 7 alpha subunits a</p> <p>Alias Symbols: MGC133040, MGC133041, P112, S1, Rpn2</p> <p>Protein Interaction Partner: HUWE1, UBC, SUMO2, SNAI2, PSMD14, TXNL1, PPFIA1, RPS28, RPS21, RPS15A, RPS12, RPS8, UCHL5, ADRM1, PSMD12, PSMD11, PSMD8, PSMD4, PSMD3, PSMD2, PSMC6, PSMC5, PSMC3, PSMC2, PSMC1, PARK2, GSK3A, CDK11A, CDK20, ICK, RNF11, HDAC6, NPM1, PSMB7, SMAD1, HSP90AB1,</p> <p>Protein Size: 953</p>
Molecular Weight:	106 kDa
Gene ID:	5707
NCBI Accession:	NM_002807 , NP_002798
UniProt:	Q99460
Pathways:	Mitotic G1-G1/S Phases , DNA Replication , Synthesis of DNA , Ubiquitin Proteasome Pathway

Application Details

Application Notes:	Optimal working dilutions should be determined experimentally by the investigator.
Comment:	Antigen size: 953 AA
Restrictions:	For Research Use only

Handling

Format:	Liquid
Concentration:	Lot specific
Buffer:	Liquid. Purified antibody supplied in 1x PBS buffer with 0.09 % (w/v) sodium azide and 2 % sucrose.
Preservative:	Sodium azide
Precaution of Use:	This product contains Sodium azide: a POISONOUS AND HAZARDOUS SUBSTANCE which should be handled by trained staff only.
Handling Advice:	Avoid repeated freeze-thaw cycles.

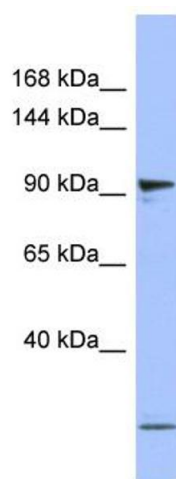
Handling

Storage:	-20 °C
Storage Comment:	For short term use, store at 2-8°C up to 1 week. For long term storage, store at -20°C in small aliquots to prevent freeze-thaw cycles.

Publications

Product cited in:	Ewing, Chu, Elisma, Li, Taylor, Climie, McBroom-Cerajewski, Robinson, OConnor, Li, Taylor, Dharsee, Ho, Heilbut, Moore, Zhang, Ornatsky, Bukhman, Ethier, Sheng, Vasilescu, Abu-Farha, Lambert, Duewel et al.: "Large-scale mapping of human protein-protein interactions by mass spectrometry. ..." in: Molecular systems biology , Vol. 3, pp. 89, (2007) (PubMed).
-------------------	--

Images



Western Blotting

Image 1. WB Suggested Anti-PSMD1 Antibody Titration:

0.2-1 ug/ml

ELISA Titer: 1:312500

Positive Control: Human Placenta