

Datasheet for ABIN2786726
anti-PSMD3 antibody (N-Term)[Go to Product page](#)

2 Images

1 Publication

Overview

Quantity:	100 µL
Target:	PSMD3
Binding Specificity:	N-Term
Reactivity:	Human, Mouse, Rat, Cow, Dog, Guinea Pig, Horse, Rabbit
Host:	Rabbit
Clonality:	Polyclonal
Conjugate:	This PSMD3 antibody is un-conjugated
Application:	Western Blotting (WB)

Product Details

Immunogen:	The immunogen is a synthetic peptide directed towards the N terminal region of human PSMD3
Sequence:	RLNHVLYKA VQGFFTSNNA TRDFLLPFLE EPMDTEADLQ FRPRTGKAAS
Predicted Reactivity:	Cow: 100%, Dog: 100%, Guinea Pig: 100%, Horse: 100%, Human: 100%, Mouse: 100%, Rabbit: 93%, Rat: 100%
Characteristics:	This is a rabbit polyclonal antibody against PSMD3. It was validated on Western Blot using a cell lysate as a positive control.
Purification:	Affinity Purified

Target Details

Target:	PSMD3
---------	-------

Target Details

Alternative Name:	PSMD3 (PSMD3 Products)
Background:	<p>The 26S proteasome is a multicatalytic proteinase complex with a highly ordered structure composed of 2 complexes, a 20S core and a 19S regulator. The 20S core is composed of 4 rings of 28 non-identical subunits, 2 rings are composed of 7 alpha subunits a</p> <p>Alias Symbols: P58, RPN3, S3, TSTA2</p> <p>Protein Interaction Partner: CEP44, ZBTB43, HUWE1, SHFM1, SPRTN, SNAI2, STAU1, PSMD14, UBC, UBQLN1, FLNC, FLNB, PSMD8, PSMD4, PSMD1, PSMC6, PSMC5, PSMC4, PSMC3, PSMC2, PSMC1, KCMF1, UCHL5, KIAA0368, ADRM1, TXNL1, SQSTM1, RPS28, RPS21, RPS15A, RPS13, RPS8, PSMD12, PSMD11, PARK2, FBXO6</p> <p>Protein Size: 534</p>
Molecular Weight:	61 kDa
Gene ID:	5709
NCBI Accession:	NM_002809 , NP_002800
UniProt:	O43242
Pathways:	Mitotic G1-G1/S Phases , DNA Replication , Synthesis of DNA , Ubiquitin Proteasome Pathway

Application Details

Application Notes:	Optimal working dilutions should be determined experimentally by the investigator.
Comment:	Antigen size: 534 AA
Restrictions:	For Research Use only

Handling

Format:	Liquid
Concentration:	Lot specific
Buffer:	Liquid. Purified antibody supplied in 1x PBS buffer with 0.09 % (w/v) sodium azide and 2 % sucrose.
Preservative:	Sodium azide
Precaution of Use:	This product contains Sodium azide: a POISONOUS AND HAZARDOUS SUBSTANCE which should be handled by trained staff only.
Handling Advice:	Avoid repeated freeze-thaw cycles.

Handling

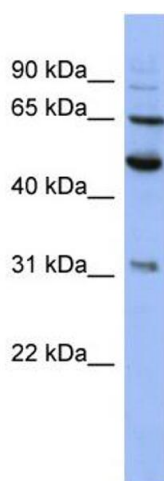
Storage: -20 °C

Storage Comment: For short term use, store at 2-8°C up to 1 week. For long term storage, store at -20°C in small aliquots to prevent freeze-thaw cycles.

Publications

Product cited in: Conti, Riva, Pesca, Iannaccone, Cannistraci, Corbo, Previtali, Quattrini, Alessio: "Increased expression of Myosin binding protein H in the skeletal muscle of amyotrophic lateral sclerosis patients." in: **Biochimica et biophysica acta**, Vol. 1842, Issue 1, pp. 99-106, (2013) ([PubMed](#)).

Images



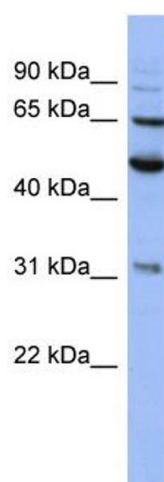
Western Blotting

Image 1. WB Suggested Anti-PSMD3 Antibody Titration:

0.2-1 ug/ml

ELISA Titer: 1:62500

Positive Control: HepG2 cell lysate



Western Blotting

Image 2. WB Suggested Anti-PSMD3

Antibody Titration: 0.2-1 µg/mL ELISA Titer: 1::2500

Positive Control: HepG2 cell lysate

PSMD3 is supported by BioGPS gene expression data to be expressed in HepG2