

Datasheet for ABIN2786727
anti-PSMD3 antibody (Middle Region)[Go to Product page](#)

2 Images

Overview

Quantity:	100 µL
Target:	PSMD3
Binding Specificity:	Middle Region
Reactivity:	Human, Mouse, Rat, Cow, Dog, Guinea Pig, Horse, Rabbit, Saccharomyces cerevisiae, Zebrafish (Danio rerio)
Host:	Rabbit
Clonality:	Polyclonal
Conjugate:	This PSMD3 antibody is un-conjugated
Application:	Western Blotting (WB)

Product Details

Immunogen:	The immunogen is a synthetic peptide directed towards the middle region of human PSMD3
Sequence:	YSTREPQLAF HQRISFCLDI HNMSVKAMRF PPKSYNKDLE SAEERREREQ
Predicted Reactivity:	Cow: 100%, Dog: 100%, Guinea Pig: 100%, Horse: 100%, Human: 100%, Mouse: 100%, Rabbit: 100%, Rat: 100%, Yeast: 82%, Zebrafish: 93%
Characteristics:	This is a rabbit polyclonal antibody against PSMD3. It was validated on Western Blot.
Purification:	Affinity Purified

Target Details

Target:	PSMD3
---------	-------

Target Details

Alternative Name: PSMD3 ([PSMD3 Products](#))

Background: The 26S proteasome is a multicatalytic proteinase complex with a highly ordered structure composed of 2 complexes, a 20S core and a 19S regulator. The 20S core is composed of 4 rings of 28 non-identical subunits, 2 rings are composed of 7 alpha subunits and 2 rings are composed of 7 beta subunits. The 19S regulator is composed of a base, which contains 6 ATPase subunits and 2 non-ATPase subunits, and a lid, which contains up to 10 non-ATPase subunits. Proteasomes are distributed throughout eukaryotic cells at a high concentration and cleave peptides in an ATP/ubiquitin-dependent process in a non-lysosomal pathway. An essential function of a modified proteasome, the immunoproteasome, is the processing of class I MHC peptides. This gene encodes one of the non-ATPase subunits of the 19S regulator lid.

Alias Symbols: P58, RPN3, S3, TSTA2

Protein Interaction Partner: CEP44, ZBTB43, HUWE1, SHFM1, SPRTN, SNAI2, STAU1, PSMD14, UBC, UBQLN1, FLNC, FLNB, PSMD8, PSMD4, PSMD1, PSMC6, PSMC5, PSMC4, PSMC3, PSMC2, PSMC1, KCMF1, UCHL5, KIAA0368, ADRM1, TXNL1, SQSTM1, RPS28, RPS21, RPS15A, RPS13, RPS8, PSMD12, PSMD11, PARK2, FBXO6

Protein Size: 534

Molecular Weight: 61 kDa

Gene ID: 5709

NCBI Accession: [NM_002809](#), [NP_002800](#)

UniProt: [O43242](#)

Pathways: [Mitotic G1-G1/S Phases](#), [DNA Replication](#), [Synthesis of DNA](#), [Ubiquitin Proteasome Pathway](#)

Application Details

Application Notes: Optimal working dilutions should be determined experimentally by the investigator.

Comment: Antigen size: 534 AA

Restrictions: For Research Use only

Handling

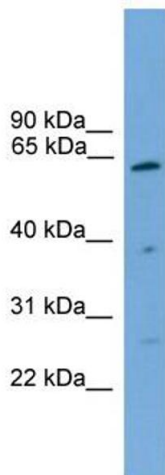
Format: Liquid

Concentration: Lot specific

Handling

Buffer:	Liquid. Purified antibody supplied in 1x PBS buffer with 0.09 % (w/v) sodium azide and 2 % sucrose.
Preservative:	Sodium azide
Precaution of Use:	This product contains Sodium azide: a POISONOUS AND HAZARDOUS SUBSTANCE which should be handled by trained staff only.
Handling Advice:	Avoid repeated freeze-thaw cycles.
Storage:	-20 °C
Storage Comment:	For short term use, store at 2-8°C up to 1 week. For long term storage, store at -20°C in small aliquots to prevent freeze-thaw cycles.

Images



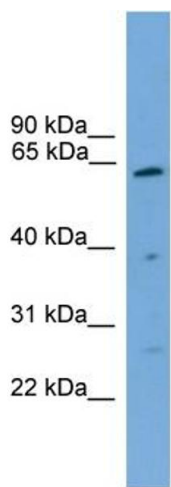
Western Blotting

Image 1. WB Suggested Anti-PSMD3 Antibody Titration:

0.2-1 ug/ml

ELISA Titer: 1:312500

Positive Control: THP-1 cell lysate



Rabbit Anti-PSMD3 Antibody
Catalog Number: ARP56480
Lot Number: QC27483
Lane: THP-1 Cell Lysate

Antibody Titration: 1.0µg/ml
Gel Concentration: 12%

Western Blotting

Image 2. WB Suggested Anti-PSMD3

Antibody Titration: 0.2-1 µg/mL ELISA Titer: 1:12500

Positive Control: THP-1 cell lysate