

Datasheet for ABIN2786730
anti-PSME2 antibody (Middle Region)[Go to Product page](#)

2 Images

Overview

Quantity:	100 µL
Target:	PSME2
Binding Specificity:	Middle Region
Reactivity:	Human, Mouse, Rat, Dog, Horse, Cow, Pig, Zebrafish (Danio rerio), Guinea Pig, Rabbit
Host:	Rabbit
Clonality:	Polyclonal
Conjugate:	This PSME2 antibody is un-conjugated
Application:	Western Blotting (WB)

Product Details

Immunogen:	The immunogen is a synthetic peptide directed towards the middle region of human PSME2
Sequence:	QEKVLERVNA VKTKVEAFQT TISKYFSERG DAVAKASKET HVMDYRALVH
Predicted Reactivity:	Cow: 100%, Dog: 100%, Guinea Pig: 93%, Horse: 93%, Human: 100%, Mouse: 100%, Pig: 100%, Rabbit: 93%, Rat: 100%, Zebrafish: 79%
Characteristics:	This is a rabbit polyclonal antibody against PSME2. It was validated on Western Blot.
Purification:	Affinity Purified

Target Details

Target:	PSME2
Alternative Name:	PSME2 (PSME2 Products)

Target Details

Background:	<p>The 26S proteasome is a multicatalytic proteinase complex with a highly ordered structure composed of 2 complexes, a 20S core and a 19S regulator. The 20S core is composed of 4 rings of 28 non-identical subunits, 2 rings are composed of 7 alpha subunits and 2 rings are composed of 7 beta subunits. The 19S regulator is composed of a base, which contains 6 ATPase subunits and 2 non-ATPase subunits, and a lid, which contains up to 10 non-ATPase subunits. Proteasomes are distributed throughout eukaryotic cells at a high concentration and cleave peptides in an ATP/ubiquitin-dependent process in a non-lysosomal pathway. An essential function of a modified proteasome, the immunoproteasome, is the processing of class I MHC peptides. The immunoproteasome contains an alternate regulator, referred to as the 11S regulator or PA28, that replaces the 19S regulator. Three subunits (alpha, beta and gamma) of the 11S regulator have been identified. This gene encodes the beta subunit of the 11S regulator, one of the two 11S subunits that is induced by gamma-interferon. Three beta and three alpha subunits combine to form a heterohexameric ring. Six pseudogenes have been identified on chromosomes 4, 5, 8, 10 and 13.</p> <p>Alias Symbols: PA28B, PA28beta, REGbeta</p> <p>Protein Interaction Partner: NAA10, PSMD14, SHFM1, UBC, PSME2, PSME1, PARK2, BAG3, NHLH1, MYOD1, EPHA2, CFTR, DDTL, TNN, CAP1, PTMA, PSMD7, PSMD2, PSMD1, PSMC5, PSMC4, PSMC2, PSMB5, PSMB3, PSMB1, PSMA6, PSMA5, PSMA3, PSMA2, PSMA1, GARS, APP, PSMC1, PSMD6, PSMB10, PSMB9, PSMB8, PSMB7,</p> <p>Protein Size: 239</p>
-------------	--

Molecular Weight:	27 kDa
Gene ID:	5721
NCBI Accession:	NM_002818 , NP_002809
UniProt:	Q9UL46
Pathways:	Mitotic G1-G1/S Phases , DNA Replication , Positive Regulation of Endopeptidase Activity , Synthesis of DNA

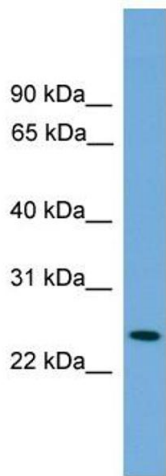
Application Details

Application Notes:	Optimal working dilutions should be determined experimentally by the investigator.
Comment:	Antigen size: 239 AA
Restrictions:	For Research Use only

Handling

Format:	Liquid
Concentration:	Lot specific
Buffer:	Liquid. Purified antibody supplied in 1x PBS buffer with 0.09 % (w/v) sodium azide and 2 % sucrose.
Preservative:	Sodium azide
Precaution of Use:	This product contains Sodium azide: a POISONOUS AND HAZARDOUS SUBSTANCE which should be handled by trained staff only.
Handling Advice:	Avoid repeated freeze-thaw cycles.
Storage:	-20 °C
Storage Comment:	For short term use, store at 2-8°C up to 1 week. For long term storage, store at -20°C in small aliquots to prevent freeze-thaw cycles.

Validation report #103654 for Western Blotting (WB)



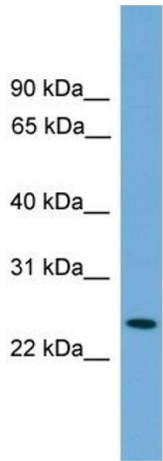
Western Blotting

Image 1. WB Suggested Anti-PSME2 Antibody Titration:

0.2-1 ug/ml

ELISA Titer: 1:62500

Positive Control: Transfected 293T



Rabbit Anti-PSME2 Antibody
Catalog Number: ARP56485
Lot Number: QC27487
Lane: Transfected 293T Cell Lysate

Antibody Titration: 1.0µg/ml
Gel Concentration: 12%

Western Blotting

Image 2. WB Suggested Anti-PSME2

Antibody Titration: 0.2-1 µg/mL ELISA Titer: 1::2500

Positive Control: Transfected 293T