

Datasheet for ABIN2786731
anti-PSME2 antibody (Middle Region)[Go to Product page](#)

2 Images

Overview

| | |
|----------------------|--|
| Quantity: | 100 µL |
| Target: | PSME2 |
| Binding Specificity: | Middle Region |
| Reactivity: | Human, Mouse, Rat, Dog, Horse, Cow, Zebrafish (Danio rerio), Guinea Pig, Rabbit, Sheep |
| Host: | Rabbit |
| Clonality: | Polyclonal |
| Conjugate: | This PSME2 antibody is un-conjugated |
| Application: | Western Blotting (WB) |

Product Details

| | |
|-----------------------|---|
| Immunogen: | The immunogen is a synthetic peptide directed towards the middle region of human PSME2 |
| Sequence: | SKETHVMDYR ALVHERDEAA YGELRAMVLD LRAFYAELYH IISSNLEKIV |
| Predicted Reactivity: | Cow: 93%, Dog: 100%, Guinea Pig: 100%, Horse: 100%, Human: 100%, Mouse: 100%, Rabbit: 100%, Rat: 100%, Sheep: 93%, Zebrafish: 86% |
| Characteristics: | This is a rabbit polyclonal antibody against PSME2. It was validated on Western Blot. |
| Purification: | Affinity Purified |

Target Details

| | |
|-------------------|--|
| Target: | PSME2 |
| Alternative Name: | PSME2 (PSME2 Products) |

Target Details

| | |
|-------------------|--|
| Background: | <p>The 26S proteasome is a multicatalytic proteinase complex with a highly ordered structure composed of 2 complexes, a 20S core and a 19S regulator. The 20S core is composed of 4 rings of 28 non-identical subunits, 2 rings are composed of 7 alpha subunits and 2 rings are composed of 7 beta subunits. The 19S regulator is composed of a base, which contains 6 ATPase subunits and 2 non-ATPase subunits, and a lid, which contains up to 10 non-ATPase subunits. Proteasomes are distributed throughout eukaryotic cells at a high concentration and cleave peptides in an ATP/ubiquitin-dependent process in a non-lysosomal pathway. An essential function of a modified proteasome, the immunoproteasome, is the processing of class I MHC peptides. The immunoproteasome contains an alternate regulator, referred to as the 11S regulator or PA28, that replaces the 19S regulator. Three subunits (alpha, beta and gamma) of the 11S regulator have been identified. This gene encodes the beta subunit of the 11S regulator, one of the two 11S subunits that is induced by gamma-interferon. Three beta and three alpha subunits combine to form a heterohexameric ring. Six pseudogenes have been identified on chromosomes 4, 5, 8, 10 and 13.</p> <p>Alias Symbols: PA28B, PA28beta, REGbeta</p> <p>Protein Interaction Partner: NAA10, PSMD14, SHFM1, UBC, PSME2, PSME1, PARK2, BAG3, NHLH1, MYOD1, EPHA2, CFTR, DDTL, TNN, CAP1, PTMA, PSMD7, PSMD2, PSMD1, PSMC5, PSMC4, PSMC2, PSMB5, PSMB3, PSMB1, PSMA6, PSMA5, PSMA3, PSMA2, PSMA1, GARS, APP, PSMC1, PSMD6, PSMB10, PSMB9, PSMB8, PSMB7,</p> <p>Protein Size: 239</p> |
| Molecular Weight: | 27 kDa |
| Gene ID: | 5721 |
| NCBI Accession: | NM_002818 , NP_002809 |
| UniProt: | Q9UL46 |
| Pathways: | Mitotic G1-G1/S Phases , DNA Replication , Positive Regulation of Endopeptidase Activity , Synthesis of DNA |

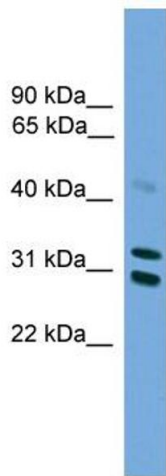
Application Details

| | |
|--------------------|--|
| Application Notes: | Optimal working dilutions should be determined experimentally by the investigator. |
| Comment: | Antigen size: 239 AA |
| Restrictions: | For Research Use only |

Handling

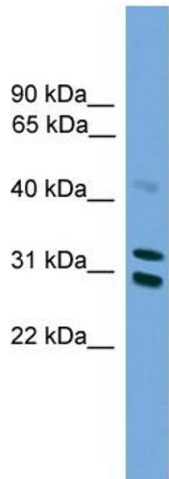
| | |
|--------------------|---|
| Format: | Liquid |
| Concentration: | Lot specific |
| Buffer: | Liquid. Purified antibody supplied in 1x PBS buffer with 0.09 % (w/v) sodium azide and 2 % sucrose. |
| Preservative: | Sodium azide |
| Precaution of Use: | This product contains Sodium azide: a POISONOUS AND HAZARDOUS SUBSTANCE which should be handled by trained staff only. |
| Handling Advice: | Avoid repeated freeze-thaw cycles. |
| Storage: | -20 °C |
| Storage Comment: | For short term use, store at 2-8°C up to 1 week. For long term storage, store at -20°C in small aliquots to prevent freeze-thaw cycles. |

Images



Western Blotting

Image 1. WB Suggested Anti-PSME2 Antibody Titration:
0.2-1 ug/ml
ELISA Titer: 1:1562500
Positive Control: HepG2 cell lysate



Rabbit Anti-PSME2 Antibody
Catalog Number: ARP56486
Lot Number: QC27488
Lane: HepG2 Cell Lysate

Antibody Titration: 1.0µg/ml
Gel Concentration: 12%

Western Blotting

Image 2. WB Suggested Anti-PSME2
Antibody Titration: 0.2-1 µg/mL ELISA Titer: 1:1562500
Positive Control: HepG2 cell lysate