

Datasheet for ABIN2786737  
**anti-PTX3 antibody (N-Term)**



[Go to Product page](#)

2 Images

## Overview

Quantity:	100 µL
Target:	PTX3
Binding Specificity:	N-Term
Reactivity:	Human, Mouse, Rat, Cow, Guinea Pig, Rabbit
Host:	Rabbit
Clonality:	Polyclonal
Conjugate:	This PTX3 antibody is un-conjugated
Application:	Western Blotting (WB), Immunohistochemistry (IHC)

## Product Details

Immunogen:	The immunogen is a synthetic peptide directed towards the N terminal region of human PTX3
Sequence:	RMLLQATDDV LRGELQRLRE ELGRLAESLA RPCAPGAPAE ARLTSALDEL
Predicted Reactivity:	Cow: 85%, Guinea Pig: 100%, Human: 100%, Mouse: 100%, Rabbit: 93%, Rat: 100%
Characteristics:	This is a rabbit polyclonal antibody against PTX3. It was validated on Western Blot using a cell lysate as a positive control.
Purification:	Affinity Purified

## Target Details

Target:	PTX3
Alternative Name:	PTX3 ( <a href="#">PTX3 Products</a> )

## Target Details

---

Background:	PTX3 plays a role in the regulation of innate resistance to pathogens, inflammatory reactions, possibly clearance of self-components and female fertility. Alias Symbols: TNFAIP5, TSG-14 Protein Interaction Partner: FGF2, CFH, C1QC, C1QB, C1QA, Protein Size: 381
Molecular Weight:	42 kDa
Gene ID:	5806
NCBI Accession:	<a href="#">NM_002852</a> , <a href="#">NP_002843</a>
UniProt:	<a href="#">P26022</a>

## Application Details

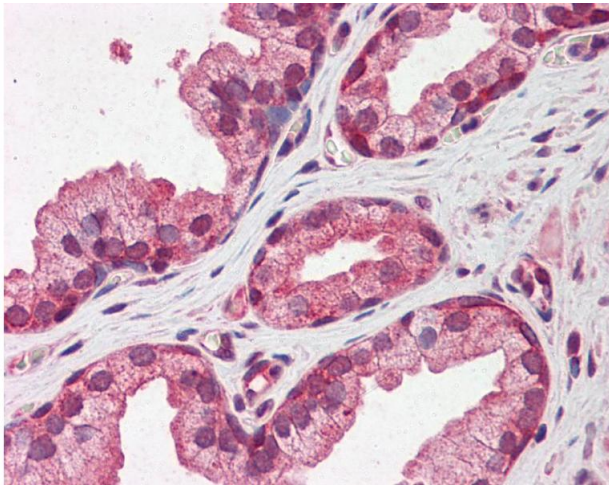
---

Application Notes:	Optimal working dilutions should be determined experimentally by the investigator.
Comment:	Antigen size: 381 AA
Restrictions:	For Research Use only

## Handling

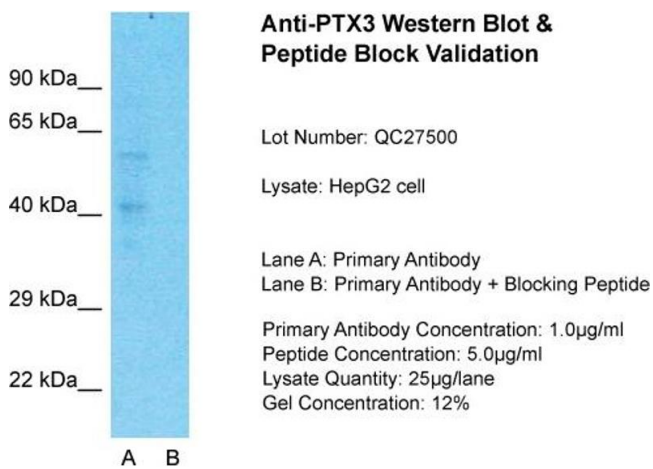
---

Format:	Liquid
Concentration:	Lot specific
Buffer:	Liquid. Purified antibody supplied in 1x PBS buffer with 0.09 % (w/v) sodium azide and 2 % sucrose.
Preservative:	Sodium azide
Precaution of Use:	This product contains Sodium azide: a POISONOUS AND HAZARDOUS SUBSTANCE which should be handled by trained staff only.
Handling Advice:	Avoid repeated freeze-thaw cycles.
Storage:	-20 °C
Storage Comment:	For short term use, store at 2-8°C up to 1 week. For long term storage, store at -20°C in small aliquots to prevent freeze-thaw cycles.



### Immunohistochemistry

Image 1.



### Anti-PTX3 Western Blot & Peptide Block Validation

Lot Number: QC27500

Lysate: HepG2 cell

Lane A: Primary Antibody  
Lane B: Primary Antibody + Blocking Peptide

Primary Antibody Concentration: 1.0µg/ml  
Peptide Concentration: 5.0µg/ml  
Lysate Quantity: 25µg/lane  
Gel Concentration: 12%

### Western Blotting

Image 2. Host: Rabbit

Target Name: PTX3

Sample Tissue: HepG2 Whole Cell

Lane A: Primary Antibody Lane B: Primary Antibody +  
Blocking Peptide

Primary Antibody Concentration: 1 µg/mL Peptide  
Concentration: 5 µg/mL Lysate Quantity: 41 µg/laneGel  
Concentration: 12 %