

Datasheet for ABIN2786742  
**anti-RALB antibody (Middle Region)**



[Go to Product page](#)

1 Image

## Overview

Quantity:	100 µL
Target:	RALB (Ralb)
Binding Specificity:	Middle Region
Reactivity:	Human, Mouse, Rat, Dog, Cow, Zebrafish (Danio rerio), Goat, Guinea Pig, Horse, Rabbit, Saccharomyces cerevisiae
Host:	Rabbit
Clonality:	Polyclonal
Conjugate:	This RALB antibody is un-conjugated
Application:	Western Blotting (WB)

## Product Details

Immunogen:	The immunogen is a synthetic peptide directed towards the middle region of human RALB
Sequence:	FREQILRVKA EEDKIPLLVV GNKSDLEERR QVPVEEARSK AEEWGVQYVE
Predicted Reactivity:	Cow: 100%, Dog: 100%, Goat: 86%, Guinea Pig: 100%, Horse: 100%, Human: 100%, Mouse: 100%, Rabbit: 100%, Rat: 100%, Yeast: 79%, Zebrafish: 100%
Characteristics:	This is a rabbit polyclonal antibody against RALB. It was validated on Western Blot using a cell lysate as a positive control.
Purification:	Affinity Purified

## Target Details

Target:	RALB (Ralb)
---------	-------------

## Target Details

Alternative Name:	RALB ( <a href="#">Ralb Products</a> )
Background:	<p>This gene encodes a GTP-binding protein that belongs to the small GTPase superfamily and Ras family of proteins. GTP-binding proteins mediate the transmembrane signaling initiated by the occupancy of certain cell surface receptors.</p> <p>Alias Symbols: -</p> <p>Protein Interaction Partner: UBC, EXOC8, EXOC2, ATG14, RALBP1, ULK1, UVRAG, USP33, PYCARD, MARCKSL1, LAMTOR3, NONO, ATP6V1B1, CALM1, RGL4, REPS1, PLCD1, REPS2,</p> <p>Protein Size: 206</p>
Molecular Weight:	23 kDa
Gene ID:	5899
NCBI Accession:	<a href="#">NM_002881</a> , <a href="#">NP_002872</a>
UniProt:	<a href="#">P36860</a>
Pathways:	<a href="#">Neurotrophin Signaling Pathway</a> , <a href="#">CXCR4-mediated Signaling Events</a>

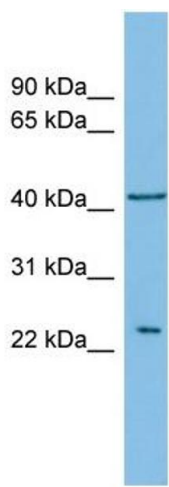
## Application Details

Application Notes:	Optimal working dilutions should be determined experimentally by the investigator.
Comment:	Antigen size: 206 AA
Restrictions:	For Research Use only

## Handling

Format:	Liquid
Concentration:	Lot specific
Buffer:	Liquid. Purified antibody supplied in 1x PBS buffer with 0.09 % (w/v) sodium azide and 2 % sucrose.
Preservative:	Sodium azide
Precaution of Use:	This product contains Sodium azide: a POISONOUS AND HAZARDOUS SUBSTANCE which should be handled by trained staff only.
Handling Advice:	Avoid repeated freeze-thaw cycles.
Storage:	-20 °C
Storage Comment:	For short term use, store at 2-8°C up to 1 week. For long term storage, store at -20°C in small

aliquots to prevent freeze-thaw cycles.



**Western Blotting**

**Image 1.** WB Suggested Anti-RALB Antibody Titration: 0.2-1 ug/ml ELISA Titer: 1:1562500 Positive Control: ACHN cell lysate RALB is strongly supported by BioGPS gene expression data to be expressed in Human ACHN cells