



Datasheet for ABIN2786746
anti-RASGRF1 antibody (Middle Region)



[Go to Product page](#)

4 Images

Overview

Quantity:	100 µL
Target:	RASGRF1
Binding Specificity:	Middle Region
Reactivity:	Human, Mouse, Rat, Cow, Dog, Guinea Pig, Horse, Rabbit, Zebrafish (Danio rerio)
Host:	Rabbit
Clonality:	Polyclonal
Conjugate:	This RASGRF1 antibody is un-conjugated
Application:	Western Blotting (WB)

Product Details

Immunogen:	The immunogen is a synthetic peptide directed towards the middle region of human RASGRF1
Sequence:	PMSEKGGKTR GRLGSLSLKK EGERQCFLFS KHLICTRGS GGKLHLTKNG
Predicted Reactivity:	Cow: 100%, Dog: 100%, Guinea Pig: 100%, Horse: 100%, Human: 100%, Mouse: 100%, Rabbit: 100%, Rat: 100%, Zebrafish: 100%
Characteristics:	This is a rabbit polyclonal antibody against RASGRF1. It was validated on Western Blot.
Purification:	Affinity Purified

Target Details

Target:	RASGRF1
Alternative Name:	RASGRF1 (RASGRF1 Products)

Target Details

Background:	<p>The protein encoded by this gene is a guanine nucleotide exchange factor (GEF) similar to the <i>Saccharomyces cerevisiae</i> CDC25 gene product. Functional analysis has demonstrated that this protein stimulates the dissociation of GDP from RAS protein. The studies of the similar gene in mouse suggested that the Ras-GEF activity of this protein in brain can be activated by Ca²⁺ influx, muscarinic receptors, and G protein beta-gamma subunit. Mouse studies also indicated that the Ras-GEF signaling pathway mediated by this protein may be important for long-term memory. Alternatively spliced transcript variants encoding distinct isoforms have been reported.</p> <p>Alias Symbols: CDC25, CDC25L, GNRP, GRF1, GRF55, H-GRF55, PP13187, ras-GRF1</p> <p>Protein Interaction Partner: EHD4, SNRNP70, CEBPA, ADRBK1, MYC, UBC, TNK2, YWHAE, USP8, RAC1, PRKACA, NTRK2, RRAS2, NTRK3, NTRK1, RHOA, YWHAB, PPP1R9B, MARK3, HRAS,</p> <p>Protein Size: 1273</p>
Molecular Weight:	145 kDa
Gene ID:	5923
NCBI Accession:	NM_002891 , NP_002882
UniProt:	Q13972
Pathways:	RTK Signaling , Cell Division Cycle , M Phase

Application Details

Application Notes:	Optimal working dilutions should be determined experimentally by the investigator.
Comment:	Antigen size: 1273 AA
Restrictions:	For Research Use only

Handling

Format:	Liquid
Concentration:	Lot specific
Buffer:	Liquid. Purified antibody supplied in 1x PBS buffer with 0.09 % (w/v) sodium azide and 2 % sucrose.
Preservative:	Sodium azide
Precaution of Use:	This product contains Sodium azide: a POISONOUS AND HAZARDOUS SUBSTANCE which should be handled by trained staff only.

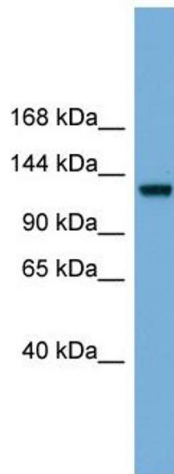
Handling

Handling Advice: Avoid repeated freeze-thaw cycles.

Storage: -20 °C

Storage Comment: For short term use, store at 2-8°C up to 1 week. For long term storage, store at -20°C in small aliquots to prevent freeze-thaw cycles.

Images



Western Blotting

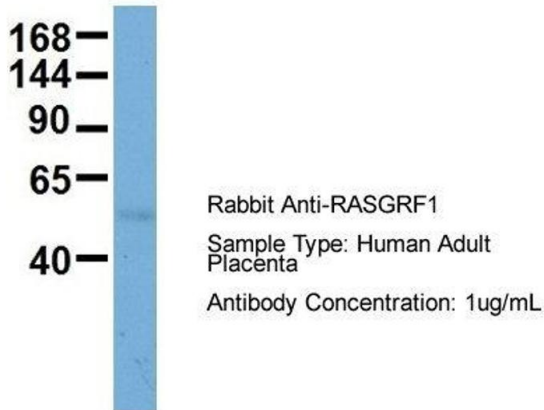
Image 1. WB Suggested Anti-RASGRF1 Antibody Titration:

0.2-1 ug/ml

ELISA Titer: 1:312500

Positive Control: Human brain

RASGRF1



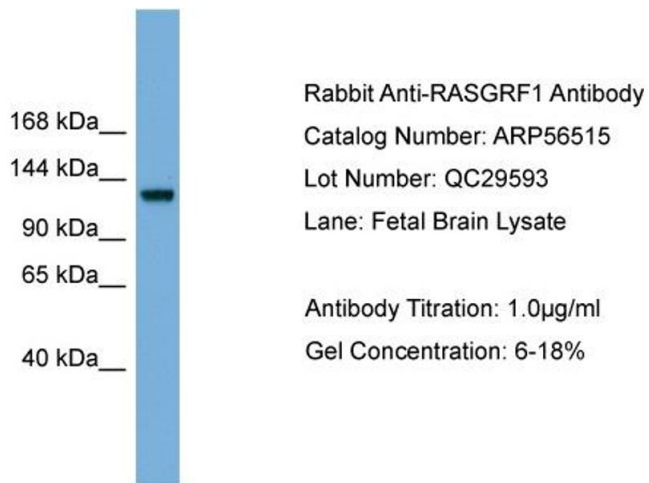
Western Blotting

Image 2. Host: Rabbit

Target Name: RASGRF1

Sample Tissue: Human Adult Placenta

Antibody Dilution: 1.0 µg/mL



Western Blotting

Image 3. WB Suggested Anti-RASGRF1

Antibody Titration: 0.2-1 µg/mL ELISA Titer: 1:12500

Positive Control: Human brain

Please check the [product details page](#) for more images. Overall 4 images are available for ABIN2786746.