



[Go to Product page](#)

Datasheet for ABIN2786762

anti-SET/TAF-I antibody (N-Term)

1 Image

1 Publication

Overview

Quantity:	100 µL
Target:	SET/TAF-I (SET)
Binding Specificity:	N-Term
Reactivity:	Human, Mouse, Rat, Cow, Zebrafish (Danio rerio), Horse, Rabbit, Guinea Pig, Dog
Host:	Rabbit
Clonality:	Polyclonal
Conjugate:	This SET/TAF-I antibody is un-conjugated
Application:	Western Blotting (WB), Immunohistochemistry (IHC), Immunoprecipitation (IP)

Product Details

Immunogen:	The immunogen is a synthetic peptide directed towards the N terminal region of human SET
Sequence:	IDEVQNEIDR LNEQASEEIL KVEQKYNKLR QPFFQKRSEL IAKIPNFWVT
Predicted Reactivity:	Cow: 100%, Dog: 100%, Guinea Pig: 100%, Horse: 100%, Human: 100%, Mouse: 100%, Rabbit: 100%, Rat: 100%, Zebrafish: 100%
Characteristics:	This is a rabbit polyclonal antibody against SET. It was validated on Western Blot using a cell lysate as a positive control.
Purification:	Affinity Purified

Target Details

Target:	SET/TAF-I (SET)
---------	-----------------

Target Details

Alternative Name:	SET (SET Products)
Background:	<p>SET is a multitasking protein, involved in apoptosis, transcription, nucleosome assembly and histone binding. Isoform 2 anti-apoptotic activity is mediated by inhibition of the GZMA-activated DNase, NME1. In the course of cytotoxic T-lymphocyte (CTL)-induced apoptosis, SET is involved in the regulation of the GZMA-activated DNase, NME1.</p> <p>Alias Symbols: 2PP2A, I2PP2A, IGAAD, PHAPII, TAF-IBETA, TAF-I, IPP2A2</p> <p>Protein Interaction Partner: SDCBP, FAM111B, THAP7, MEOX2, HUWE1, UBC, APP, Fbxl16, FTSJ3, GART, XRCC6, FTH1, SWAP70, FAF1, HSPH1, PAICS, FARSB, RANBP3, HIRIP3, UGP2, TARS, SUPT5H, PLOD2, PARK2, FOS, MTERF1, PRKAR1A, MDM2, UBD, SOX2, ICAM1, GZMK, CD81, IGSF8, NUPR1, NUCB1, JUNB, FN1,</p> <p>Protein Size: 277</p>
Molecular Weight:	32 kDa
Gene ID:	6418
NCBI Accession:	NM_003011 , NP_003002
UniProt:	B2RCX0
Pathways:	Apoptosis

Application Details

Application Notes:	Optimal working dilutions should be determined experimentally by the investigator.
Comment:	Antigen size: 277 AA
Restrictions:	For Research Use only

Handling

Format:	Liquid
Concentration:	Lot specific
Buffer:	Liquid. Purified antibody supplied in 1x PBS buffer with 0.09 % (w/v) sodium azide and 2 % sucrose.
Preservative:	Sodium azide
Precaution of Use:	This product contains Sodium azide: a POISONOUS AND HAZARDOUS SUBSTANCE which should be handled by trained staff only.
Handling Advice:	Avoid repeated freeze-thaw cycles.

Handling

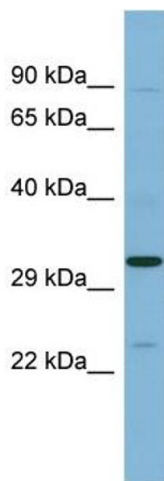
Storage: -20 °C

Storage Comment: For short term use, store at 2-8°C up to 1 week. For long term storage, store at -20°C in small aliquots to prevent freeze-thaw cycles.

Publications

Product cited in: Conti, Riva, Pesca, Iannaccone, Cannistraci, Corbo, Previtali, Quattrini, Alessio: "Increased expression of Myosin binding protein H in the skeletal muscle of amyotrophic lateral sclerosis patients." in: **Biochimica et biophysica acta**, Vol. 1842, Issue 1, pp. 99-106, (2013) ([PubMed](#)).

Images



Western Blotting

Image 1. WB Suggested Anti-SET Antibody Titration: 0.2-1 ug/ml

ELISA Titer: 1:1562500

Positive Control: Human Spleen