

Datasheet for ABIN2786773
anti-RAB5 antibody (Middle Region)



[Go to Product page](#)

3 Images

1 Publication

Overview

Quantity:	100 µL
Target:	RAB5 (RAB5A)
Binding Specificity:	Middle Region
Reactivity:	Human, Mouse, Rat, Cow, Dog, Sheep, Horse, Guinea Pig, Rabbit
Host:	Rabbit
Clonality:	Polyclonal
Conjugate:	This RAB5 antibody is un-conjugated
Application:	Western Blotting (WB), Immunohistochemistry (IHC)

Product Details

Immunogen:	The immunogen is a synthetic peptide directed towards the middle region of human RAB5A
Sequence:	KTSMNVNEIF MAIAKKLPKN EPQNPGANSA RGRGVDLTEP TQPTRNQCCS
Predicted Reactivity:	Cow: 93%, Dog: 100%, Guinea Pig: 100%, Horse: 100%, Human: 100%, Mouse: 100%, Rabbit: 93%, Rat: 100%, Sheep: 79%
Characteristics:	This is a rabbit polyclonal antibody against RAB5A. It was validated on Western Blot using a cell lysate as a positive control.
Purification:	Affinity Purified

Target Details

Target:	RAB5 (RAB5A)
---------	--------------

Target Details

Alternative Name:	RAB5A (RAB5A Products)
Background:	<p>RAB5A is required for the fusion of plasma membranes and early endosomes.</p> <p>Alias Symbols: RAB5</p> <p>Protein Interaction Partner: UBC, TNF, PTGIR, BAG3, NME2, KCNN3, SUN2, RABAC1, APPL1, ATP13A2, IGF2BP2, RAB7A, MOGS, MOV10, RHOT2, SNCA, RUFY1, RBSN, RABGEF1, ANKFY1, RABEP1, RAB11A, EEA1, TYRP1, TF, PIK3CB, PIK3C3, GRIK4, TBC1D17, TBC1D15, RIN1, KCNA5, SGSM3, RABEP2, SH3KBP1, CFTR,</p> <p>Protein Size: 215</p>
Molecular Weight:	24 kDa
Gene ID:	5868
NCBI Accession:	NM_004162 , NP_004153
UniProt:	P20339
Pathways:	Smooth Muscle Cell Migration , Regulation of long-term Neuronal Synaptic Plasticity

Application Details

Application Notes:	Optimal working dilutions should be determined experimentally by the investigator.
Comment:	Antigen size: 215 AA
Restrictions:	For Research Use only

Handling

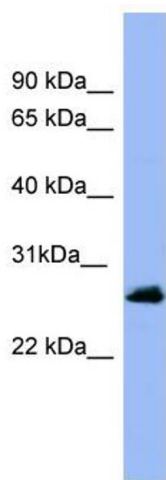
Format:	Liquid
Concentration:	Lot specific
Buffer:	Liquid. Purified antibody supplied in 1x PBS buffer with 0.09 % (w/v) sodium azide and 2 % sucrose.
Preservative:	Sodium azide
Precaution of Use:	This product contains Sodium azide: a POISONOUS AND HAZARDOUS SUBSTANCE which should be handled by trained staff only.
Handling Advice:	Avoid repeated freeze-thaw cycles.
Storage:	-20 °C
Storage Comment:	For short term use, store at 2-8°C up to 1 week. For long term storage, store at -20°C in small

aliquots to prevent freeze-thaw cycles.

Publications

Product cited in: Jong, Wu, Li, Sun, Fabbri, Wayne, Seeger: "Large-scale isolation and cytotoxicity of extracellular vesicles derived from activated human natural killer cells." in: **Journal of extracellular vesicles**, Vol. 6, Issue 1, pp. 1294368, (2017) ([PubMed](#)).

Images



Western Blotting

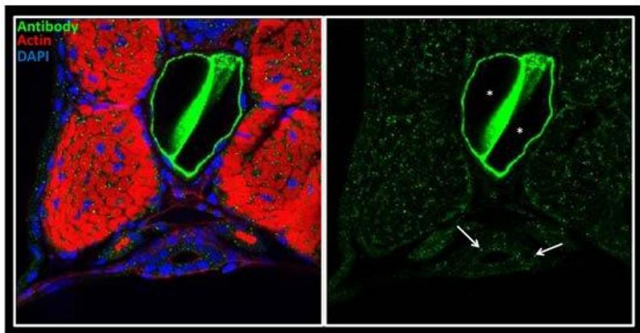
Image 1. WB Suggested Anti-RAB5A Antibody Titration:

0.2-1 ug/ml

ELISA Titer: 1:1562500

Positive Control: Human Muscle

RAB5A-3dpf



See Immunohistochemistry 1 Data for more information.

Immunohistochemistry

Image 2. Sample type: zebra gut epithelial cells

Green: primary

Red: actin

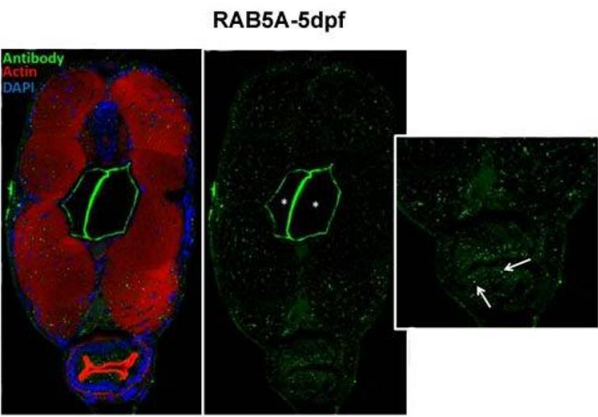
Blue: DAPI

Primary dilution: 1:5000

Secondary Dilution: 1:300

Image Submitted by: Michel Bagnat

Duke University Medical Center .



See Immunohistochemistry 2 Data for more information.

Immunohistochemistry

Image 3. Sample type: zebra gut epithelial cells

Green: primary

Red: actin

Blue: DAPI

Primary dilution: 1:5000

Secondary Dilution: 1:300

Image Submitted by: Michel Bagnat

Duke University Medical Center .