

Datasheet for ABIN2786775
anti-RAB27B antibody (C-Term)[Go to Product page](#)

2 Images

Overview

Quantity:	100 µL
Target:	RAB27B
Binding Specificity:	C-Term
Reactivity:	Human, Mouse, Rat, Dog, Cow, Guinea Pig, Horse, Rabbit, Zebrafish (Danio rerio)
Host:	Rabbit
Clonality:	Polyclonal
Conjugate:	This RAB27B antibody is un-conjugated
Application:	Western Blotting (WB)

Product Details

Sequence:	YCENPDIVLI GNKADLPDQR EVNERQAREL AEKYGIPYFE TSAATGQNVE
Predicted Reactivity:	Cow: 100%, Dog: 100%, Guinea Pig: 100%, Horse: 100%, Human: 100%, Mouse: 100%, Rabbit: 100%, Rat: 100%, Zebrafish: 79%
Characteristics:	This is a rabbit polyclonal antibody against Rab27b. It was validated on Western Blot.
Purification:	Affinity Purified

Target Details

Target:	RAB27B
Alternative Name:	Rab27b (RAB27B Products)
Background:	Rab27b may be involved in targeting uroplakins to urothelial apical membranes.

Target Details

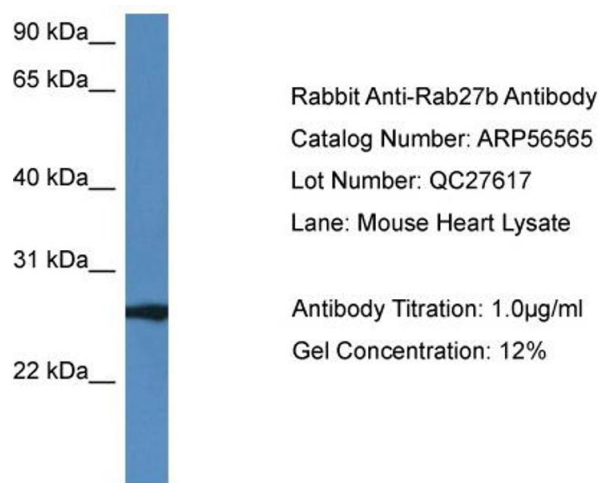
	Alias Symbols: 2310021G14Rik, B130064M09Rik Protein Interaction Partner: Sytl4, Sytl1, Mlph, Rph3a1, Rph3a, Sytl2, Protein Size: 218
Molecular Weight:	24 kDa
Gene ID:	80718
NCBI Accession:	NM_030554 , NP_085031
UniProt:	Q99P58

Application Details

Application Notes:	Optimal working dilutions should be determined experimentally by the investigator.
Comment:	Antigen size: 218 AA
Restrictions:	For Research Use only

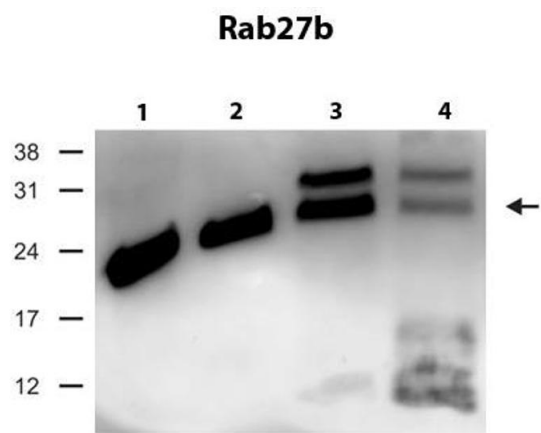
Handling

Format:	Liquid
Concentration:	Lot specific
Buffer:	Liquid. Purified antibody supplied in 1x PBS buffer with 0.09 % (w/v) sodium azide and 2 % sucrose.
Preservative:	Sodium azide
Precaution of Use:	This product contains Sodium azide: a POISONOUS AND HAZARDOUS SUBSTANCE which should be handled by trained staff only.
Handling Advice:	Avoid repeated freeze-thaw cycles.
Storage:	-20 °C
Storage Comment:	For short term use, store at 2-8°C up to 1 week. For long term storage, store at -20°C in small aliquots to prevent freeze-thaw cycles.



Western Blotting

Image 1.



Western Blotting

Image 2. WB Suggested Anti-Rab27b Antibody

Titration: 0.5 ug/ml

Positive Control: human testis, mouse liver, brain and testis

See Immunblot 2 Data and Customer Feedback tab for more information.