

Datasheet for ABIN2786790
anti-MYBPH antibody (Middle Region)[Go to Product page](#)

2 Images

Overview

Quantity:	100 µL
Target:	MYBPH
Binding Specificity:	Middle Region
Reactivity:	Human, Mouse, Rat, Rabbit, Cow, Horse, Dog, Guinea Pig, Zebrafish (Danio rerio)
Host:	Rabbit
Clonality:	Polyclonal
Conjugate:	This MYBPH antibody is un-conjugated
Application:	Western Blotting (WB)

Product Details

Immunogen:	The immunogen is a synthetic peptide directed towards the middle region of human MYBPH
Sequence:	APKIRVPRHL RQTYIRQVGE TVNLQIPFQG KPKPQATWTH NGHALDSQRV
Predicted Reactivity:	Cow: 86%, Dog: 93%, Guinea Pig: 93%, Horse: 86%, Human: 100%, Mouse: 93%, Rabbit: 86%, Rat: 93%, Zebrafish: 85%
Characteristics:	This is a rabbit polyclonal antibody against MYBPH. It was validated on Western Blot.
Purification:	Affinity Purified

Target Details

Target:	MYBPH
Alternative Name:	MYBPH (MYBPH Products)

Target Details

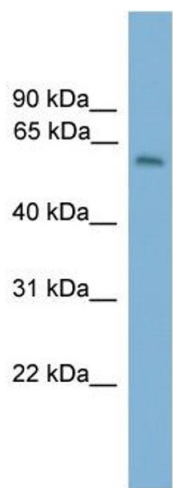
Background:	MYBPH binds to myosin, probably involved in interaction with thick myofilaments in the A-band. Alias Symbols: - Protein Interaction Partner: BAG3, ELAVL1, UBC, MYBPC2, Protein Size: 477
Molecular Weight:	52 kDa
Gene ID:	4608
NCBI Accession:	NM_004997 , NP_004988
UniProt:	Q13203

Application Details

Application Notes:	Optimal working dilutions should be determined experimentally by the investigator.
Comment:	Antigen size: 477 AA
Restrictions:	For Research Use only

Handling

Format:	Liquid
Concentration:	Lot specific
Buffer:	Liquid. Purified antibody supplied in 1x PBS buffer with 0.09 % (w/v) sodium azide and 2 % sucrose.
Preservative:	Sodium azide
Precaution of Use:	This product contains Sodium azide: a POISONOUS AND HAZARDOUS SUBSTANCE which should be handled by trained staff only.
Handling Advice:	Avoid repeated freeze-thaw cycles.
Storage:	-20 °C
Storage Comment:	For short term use, store at 2-8°C up to 1 week. For long term storage, store at -20°C in small aliquots to prevent freeze-thaw cycles.



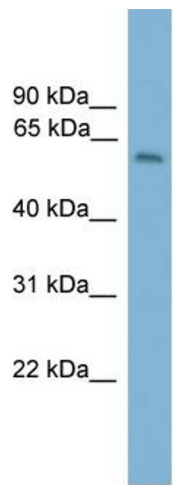
Western Blotting

Image 1. WB Suggested Anti-MYBPH Antibody Titration:

0.2-1 ug/ml

ELISA Titer: 1:312500

Positive Control: Human Liver



Rabbit Anti-MYBPH Antibody
Catalog Number: ARP56599
Lot Number: QC27693
Lane: Fetal Liver Lysate

Antibody Titration: 1.0µg/ml
Gel Concentration: 12%

Western Blotting

Image 2. WB Suggested Anti-MYBPH

Antibody Titration: 0.2-1 µg/mL ELISA Titer: 1::12500

Positive Control: Human Liver