

Datasheet for ABIN2786797
anti-PDE1C antibody (Middle Region)[Go to Product page](#)

1 Image

Overview

Quantity:	100 µL
Target:	PDE1C
Binding Specificity:	Middle Region
Reactivity:	Human, Mouse, Rat, Cow, Rabbit, Dog, Horse, Guinea Pig, Pig
Host:	Rabbit
Clonality:	Polyclonal
Conjugate:	This PDE1C antibody is un-conjugated
Application:	Western Blotting (WB)

Product Details

Immunogen:	The immunogen is a synthetic peptide directed towards the middle region of human PDE1C
Sequence:	IDFIVEPTFT VLTDMTKIV SPLIDETSQT GGTGQRRSSL NSISSSDAKR
Predicted Reactivity:	Cow: 100%, Dog: 93%, Guinea Pig: 92%, Horse: 92%, Human: 100%, Mouse: 100%, Pig: 100%, Rabbit: 93%, Rat: 100%
Characteristics:	This is a rabbit polyclonal antibody against PDE1C. It was validated on Western Blot using a cell lysate as a positive control.
Purification:	Affinity Purified

Target Details

Target:	PDE1C
---------	-------

Target Details

Alternative Name:	PDE1C (PDE1C Products)
Background:	<p>Cyclic nucleotide phosphodiesterases (PDEs) catalyze hydrolysis of the cyclic nucleotides cAMP and cGMP to the corresponding nucleoside 5-prime-monophosphates. Mammalian PDEs have been classified into several families based on their biochemical properties</p> <p>Alias Symbols: Hcam3</p> <p>Protein Size: 634</p>
Molecular Weight:	72 kDa
Gene ID:	5137
NCBI Accession:	NM_005020 , NP_005011
UniProt:	Q8TAE4
Pathways:	EGFR Signaling Pathway , Neurotrophin Signaling Pathway , Negative Regulation of Hormone Secretion , cAMP Metabolic Process , G-protein mediated Events , Interaction of EGFR with phospholipase C-gamma

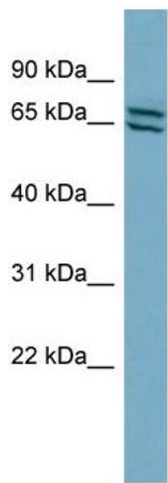
Application Details

Application Notes:	Optimal working dilutions should be determined experimentally by the investigator.
Comment:	Antigen size: 634 AA
Restrictions:	For Research Use only

Handling

Format:	Liquid
Concentration:	Lot specific
Buffer:	Liquid. Purified antibody supplied in 1x PBS buffer with 0.09 % (w/v) sodium azide and 2 % sucrose.
Preservative:	Sodium azide
Precaution of Use:	This product contains Sodium azide: a POISONOUS AND HAZARDOUS SUBSTANCE which should be handled by trained staff only.
Handling Advice:	Avoid repeated freeze-thaw cycles.
Storage:	-20 °C
Storage Comment:	For short term use, store at 2-8°C up to 1 week. For long term storage, store at -20°C in small

aliquots to prevent freeze-thaw cycles.



Western Blotting

Image 1. WB Suggested Anti-PDE1C Antibody Titration:

0.2-1 ug/ml

ELISA Titer: 1:1562500

Positive Control: HepG2 cell lysate