



[Go to Product page](#)

Datasheet for ABIN2786800

anti-Plastin 3 antibody (Middle Region)

2 Images

Overview

Quantity:	100 µL
Target:	Plastin 3 (PLS3)
Binding Specificity:	Middle Region
Reactivity:	Human, Mouse, Rat, Pig, Rabbit, Cow, Dog, Horse, Saccharomyces cerevisiae, Guinea Pig
Host:	Rabbit
Clonality:	Polyclonal
Conjugate:	This Plastin 3 antibody is un-conjugated
Application:	Western Blotting (WB)

Product Details

Immunogen:	The immunogen is a synthetic peptide directed towards the middle region of human PLS3
Sequence:	RRYTLNVLED LGDGQKANDD IIVNWNRTL SEAGKSTSIQ SFKDKTISSS
Predicted Reactivity:	Cow: 100%, Dog: 100%, Guinea Pig: 93%, Horse: 100%, Human: 100%, Mouse: 100%, Pig: 100%, Rabbit: 100%, Rat: 100%, Yeast: 77%
Characteristics:	This is a rabbit polyclonal antibody against PLS3. It was validated on Western Blot using a cell lysate as a positive control.
Purification:	Affinity Purified

Target Details

Target:	Plastin 3 (PLS3)
---------	------------------

Target Details

Alternative Name:	PLS3 (PLS3 Products)
Background:	<p>Plastins are a family of actin-binding proteins that are conserved throughout eukaryote evolution and expressed in most tissues of higher eukaryotes. In humans, two ubiquitous plastin isoforms (L and T) have been identified. Plastin 1 (otherwise known as</p> <p>Alias Symbols: t-plastin, T-plastin</p> <p>Protein Interaction Partner: STAU1, TYMS, THOP1, TALD01, SORD, RANBP1, FDPS, ANXA6, Aif1, TP63, UBC, THG1L, PSMD6, SNX3, TXNRD1, SOD1, CLNS1A, APP, CUL5, ISG15, HDGF, Sass6, Pafah1b1, Mapk13, ATXN2, IKBKE, HLA-B,</p> <p>Protein Size: 630</p>
Molecular Weight:	71 kDa
Gene ID:	5358
NCBI Accession:	NM_005032 , NP_005023
UniProt:	P13797

Application Details

Application Notes:	Optimal working dilutions should be determined experimentally by the investigator.
Comment:	Antigen size: 630 AA
Restrictions:	For Research Use only

Handling

Format:	Liquid
Concentration:	Lot specific
Buffer:	Liquid. Purified antibody supplied in 1x PBS buffer with 0.09 % (w/v) sodium azide and 2 % sucrose.
Preservative:	Sodium azide
Precaution of Use:	This product contains Sodium azide: a POISONOUS AND HAZARDOUS SUBSTANCE which should be handled by trained staff only.
Handling Advice:	Avoid repeated freeze-thaw cycles.
Storage:	-20 °C
Storage Comment:	For short term use, store at 2-8°C up to 1 week. For long term storage, store at -20°C in small

aliquots to prevent freeze-thaw cycles.

Images



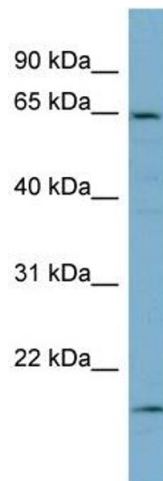
Western Blotting

Image 1. WB Suggested Anti-PLS3 Antibody Titration: 0.2-

1 ug/ml

ELISA Titer: 1:62500

Positive Control: HT1080 cell lysate



Western Blotting

Image 2. WB Suggested Anti-PLS3

Antibody Titration: 0.2-1 µg/mL ELISA Titer: 1:2500

Positive Control: HT1080 cell lysate

PLS3 is supported by BioGPS gene expression data to be expressed in HT1080