

Datasheet for ABIN2786802
anti-PPID antibody (Middle Region)



[Go to Product page](#)

3 Images

Overview

Quantity:	100 µL
Target:	PPID
Binding Specificity:	Middle Region
Reactivity:	Human, Mouse, Rat, Zebrafish (Danio rerio), Dog, Rabbit, Guinea Pig, Cow, Horse, Pig
Host:	Rabbit
Clonality:	Polyclonal
Conjugate:	This PPID antibody is un-conjugated
Application:	Western Blotting (WB)

Product Details

Immunogen:	The immunogen is a synthetic peptide directed towards the middle region of human PPID
Sequence:	AECGELKEGD DGGIFPKDGS GDSHPDFPED ADIDLKDVDK ILLITEDLKN
Predicted Reactivity:	Cow: 100%, Dog: 93%, Guinea Pig: 93%, Horse: 100%, Human: 100%, Mouse: 100%, Pig: 100%, Rabbit: 100%, Rat: 100%, Zebrafish: 83%
Characteristics:	This is a rabbit polyclonal antibody against PPID. It was validated on Western Blot using a cell lysate as a positive control.
Purification:	Affinity Purified

Target Details

Target:	PPID
---------	------

Target Details

Alternative Name:	PPID (PPID Products)
Background:	<p>PPID is a member of the peptidyl-prolyl cis-trans isomerase (PPIase) family. PPIases catalyze the cis-trans isomerization of proline imidic peptide bonds in oligopeptides and accelerate the folding of proteins. This protein has been shown to possess PPIase activity and, similar to other family members, can bind to the immunosuppressant cyclosporin A. The protein encoded by this gene is a member of the peptidyl-prolyl cis-trans isomerase (PPIase) family. PPIases catalyze the cis-trans isomerization of proline imidic peptide bonds in oligopeptides and accelerate the folding of proteins. This protein has been shown to possess PPIase activity and, similar to other family members, can bind to the immunosuppressant cyclosporin A.</p> <p>Publication Note: This RefSeq record includes a subset of the publications that are available for this gene. Please see the Entrez Gene record to access additional publications.</p> <p>Alias Symbols: CYP-40, CYPD, MGC33096</p> <p>Protein Interaction Partner: UBC, TRIM27, GPALPP1, CDC37, PTGES3, AHSA1, BCL2, PSAT1, HPRT1, GCLC, FBXO25, S100A6, S100A2, S100A1, HSP90AA1, TUBB, GNB2L1, TUBA1A, RPS3, ILF2, HSP90AB1, HSPA1A, XRCC6, FN1, APP, NR3C2, NR3C1, AR, LNX1, Nedd4, PLK1, CSNK2B, NPM1, HSPA8, KAT7, SMURF2, HA</p> <p>Protein Size: 370</p>
Molecular Weight:	41 kDa
Gene ID:	5481
NCBI Accession:	NM_005038 , NP_005029
UniProt:	Q08752
Pathways:	Nuclear Hormone Receptor Binding

Application Details

Application Notes:	Optimal working dilutions should be determined experimentally by the investigator.
Comment:	Antigen size: 370 AA
Restrictions:	For Research Use only

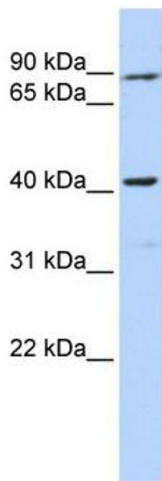
Handling

Format:	Liquid
Concentration:	Lot specific

Handling

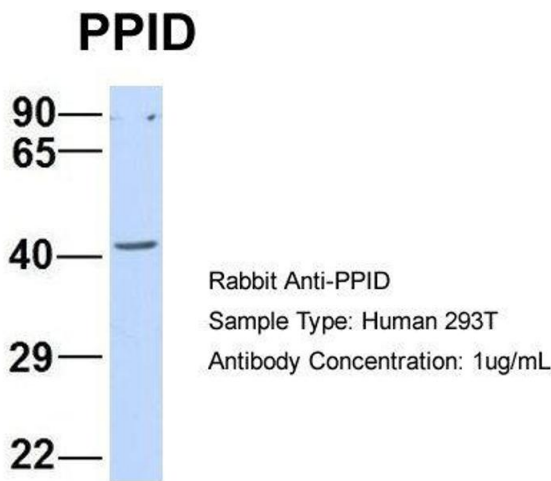
Buffer:	Liquid. Purified antibody supplied in 1x PBS buffer with 0.09 % (w/v) sodium azide and 2 % sucrose.
Preservative:	Sodium azide
Precaution of Use:	This product contains Sodium azide: a POISONOUS AND HAZARDOUS SUBSTANCE which should be handled by trained staff only.
Handling Advice:	Avoid repeated freeze-thaw cycles.
Storage:	-20 °C
Storage Comment:	For short term use, store at 2-8°C up to 1 week. For long term storage, store at -20°C in small aliquots to prevent freeze-thaw cycles.

Images



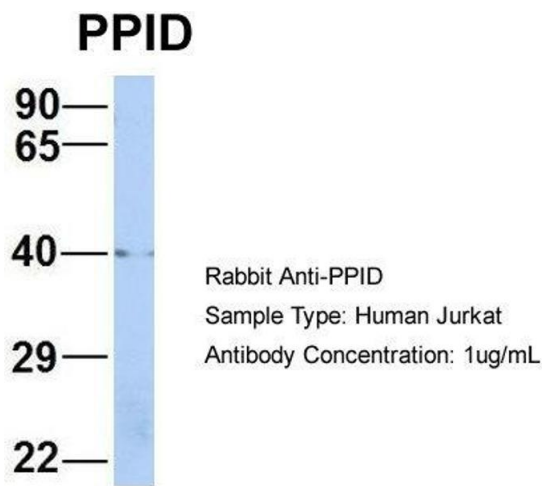
Western Blotting

Image 1. WB Suggested Anti-PPID Antibody Titration: 0.2-1 ug/ml
ELISA Titer: 1:312500
Positive Control: 721_B cell lysate



Western Blotting

Image 2. Host: Rabbit
Target Name: PPID
Sample Tissue: Human 293T
Antibody Dilution: 1.0 µg/mL



Western Blotting

Image 3. Host: Rabbit
Target Name: PPID
Sample Tissue: Human Jurkat
Antibody Dilution: 1.0 µg/mL PPID is strongly supported by
BioGPS gene expression data to be expressed in Jurkat