

Datasheet for ABIN2786825
anti-Septin 2 antibody (N-Term)

3 Images

[Go to Product page](#)

Overview

Quantity:	100 µL
Target:	Septin 2 (SEPT2)
Binding Specificity:	N-Term
Reactivity:	Human, Mouse, Rat, Cow, Guinea Pig, Horse, Rabbit, Dog, Pig, Zebrafish (Danio rerio)
Host:	Rabbit
Clonality:	Polyclonal
Conjugate:	This Septin 2 antibody is un-conjugated
Application:	Western Blotting (WB)

Product Details

Immunogen:	The immunogen is a synthetic peptide directed towards the N terminal region of human SEPT2
Sequence:	MSKQQPTQFI NPETPGYVGF ANLPNQVHRK SVKKGFEFTL MVVGESGLGK
Predicted Reactivity:	Cow: 93%, Dog: 100%, Guinea Pig: 93%, Horse: 93%, Human: 100%, Mouse: 100%, Pig: 100%, Rabbit: 100%, Rat: 100%, Zebrafish: 90%
Characteristics:	This is a rabbit polyclonal antibody against SEPT2. It was validated on Western Blot using a cell lysate as a positive control.
Purification:	Affinity Purified

Target Details

Target:	Septin 2 (SEPT2)
---------	------------------

Target Details

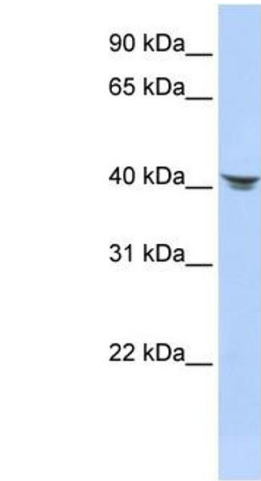
Alternative Name:	SEPT2 (SEPT2 Products)
Background:	<p>SEPT2 is required for normal progress through mitosis. SEPT2 is involved in cytokinesis.</p> <p>Alias Symbols: DIFF6, KIAA0158, NEDD5, Pnutl3, hNedd5</p> <p>Protein Interaction Partner: SEPT5, PLEKHF2, SEPT6, UBC, NEDD8, SEPT11, SNX24, COPE, DDB2, COPA, SEPT7, FN1, CSNK2A1, TRA2B, SRSF7, SRSF5, SRSF3, PSMC6, HNRNPM, MYL1, HNRNPU, GTF3C1, EEF1A1, ZNF326, ZC3H18, VASN, TRIM55, DYNLRB1, KLC2, TRA2A, SRRM2, ADNP, NCSTN, ACIN1, U2AF2, UTP14A,</p> <p>Protein Size: 361</p>
Molecular Weight:	41 kDa
Gene ID:	4735
NCBI Accession:	NM_006155 , NP_006146
UniProt:	Q15019

Application Details

Application Notes:	Optimal working dilutions should be determined experimentally by the investigator.
Comment:	Antigen size: 361 AA
Restrictions:	For Research Use only

Handling

Format:	Liquid
Concentration:	Lot specific
Buffer:	Liquid. Purified antibody supplied in 1x PBS buffer with 0.09 % (w/v) sodium azide and 2 % sucrose.
Preservative:	Sodium azide
Precaution of Use:	This product contains Sodium azide: a POISONOUS AND HAZARDOUS SUBSTANCE which should be handled by trained staff only.
Handling Advice:	Avoid repeated freeze-thaw cycles.
Storage:	-20 °C
Storage Comment:	For short term use, store at 2-8°C up to 1 week. For long term storage, store at -20°C in small aliquots to prevent freeze-thaw cycles.



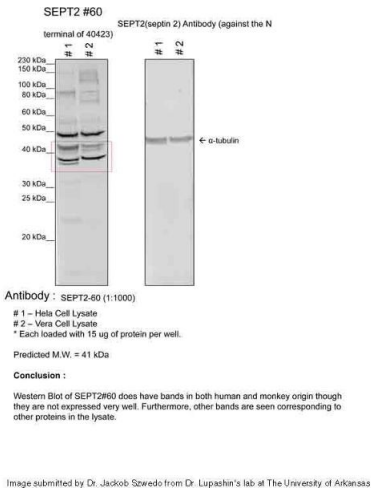
Western Blotting

Image 1. WB Suggested Anti-SEPT2 Antibody Titration:

0.2-1 ug/ml

ELISA Titer: 1:312500

Positive Control: HepG2 cell lysate



Western Blotting

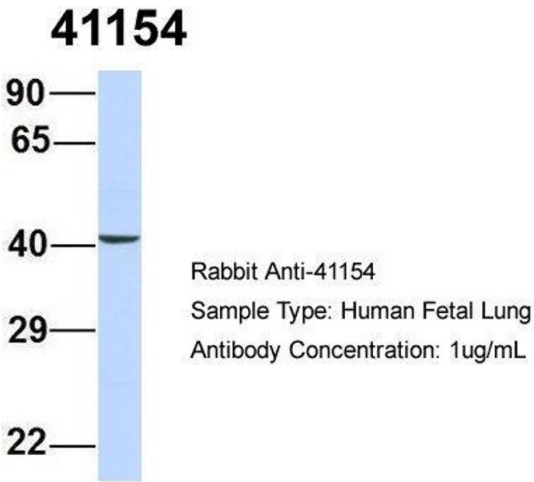
Image 2. Sample Type: 1. Human Cervical Cancer Cell Lysate (15ug)
2. Monkey Fibroblast Cell Lysate (15ug)

Primary Dilution: 1:1000

Secondary Antibody: goat anti-Rabbit

Secondary Dilution: 1:40,000

Image Submitted by: Dr. Jakob Szewdo, Dr. Lupashin's Lab
University of Arkansas for Medical Sciences.



Western Blotting

Image 3. Host: Rabbit

Target Name: 41154

Sample Tissue: Human Fetal Lung

Antibody Dilution: 1.0 µg/mL