



[Go to Product page](#)

Datasheet for ABIN2786830

anti-PDE4D antibody (N-Term)

2 Images

Overview

Quantity:	100 µL
Target:	PDE4D
Binding Specificity:	N-Term
Reactivity:	Human, Rat, Mouse, Horse, Pig, Rabbit, Cow, Dog
Host:	Rabbit
Clonality:	Polyclonal
Conjugate:	This PDE4D antibody is un-conjugated
Application:	Western Blotting (WB)

Product Details

Immunogen:	The immunogen is a synthetic peptide corresponding to a region of Mouse
Sequence:	PFAQVLASLR TVRNNFAALT NLQDRAPSKR SPMCNQPSIN KATITEEAYQ
Predicted Reactivity:	Cow: 100%, Dog: 100%, Horse: 100%, Human: 100%, Mouse: 100%, Pig: 100%, Rabbit: 93%, Rat: 100%
Characteristics:	This is a rabbit polyclonal antibody against Pde4d. It was validated on Western Blot.
Purification:	Affinity Purified

Target Details

Target:	PDE4D
Alternative Name:	Pde4d (PDE4D Products)

Target Details

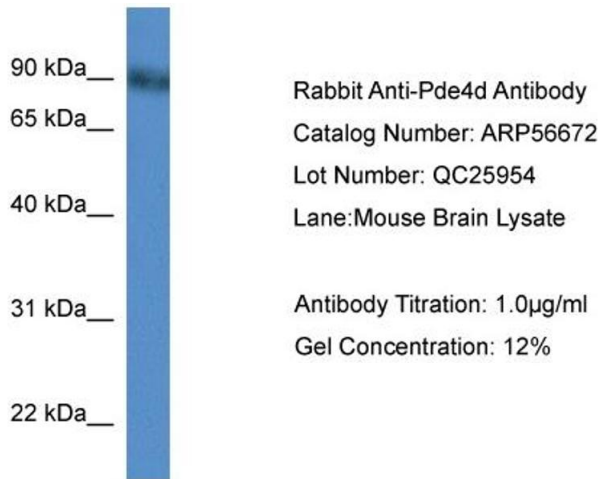
Background:	Pde4d hydrolyzes the second messenger cAMP, which is a key regulator of many important physiological processes. Alias Symbols: 9630011N22Rik, Dpde3 Protein Interaction Partner: Nphp4, Ywhaz, Ubc, Protein Size: 747
Molecular Weight:	84 kDa
Gene ID:	238871
NCBI Accession:	NM_011056 , NP_035186
UniProt:	Q01063
Pathways:	Cellular Response to Molecule of Bacterial Origin , cAMP Metabolic Process , Myometrial Relaxation and Contraction , Regulation of G-Protein Coupled Receptor Protein Signaling

Application Details

Application Notes:	Optimal working dilutions should be determined experimentally by the investigator.
Comment:	Antigen size: 747 AA
Restrictions:	For Research Use only

Handling

Format:	Liquid
Concentration:	Lot specific
Buffer:	Liquid. Purified antibody supplied in 1x PBS buffer with 0.09 % (w/v) sodium azide and 2 % sucrose.
Preservative:	Sodium azide
Precaution of Use:	This product contains Sodium azide: a POISONOUS AND HAZARDOUS SUBSTANCE which should be handled by trained staff only.
Handling Advice:	Avoid repeated freeze-thaw cycles.
Storage:	-20 °C
Storage Comment:	For short term use, store at 2-8°C up to 1 week. For long term storage, store at -20°C in small aliquots to prevent freeze-thaw cycles.



Western Blotting

Image 1. WB Suggested Anti-Pde4d

Antibody Titration: 0.2-1 µg/mL ELISA Titer: 1:1562500

Positive Control: Mouse Brain



Western Blotting

Image 2. WB Suggested Anti-Pde4d Antibody Titration:

0.2-1 µg/ml

ELISA Titer: 1:1562500

Positive Control: Mouse Brain