

Datasheet for ABIN2786831
anti-PDE4D antibody (C-Term)



[Go to Product page](#)

2 Images

Overview

Quantity:	100 µL
Target:	PDE4D
Binding Specificity:	C-Term
Reactivity:	Human, Rat, Mouse, Horse, Cow, Dog, Rabbit, Guinea Pig, Zebrafish (Danio rerio)
Host:	Rabbit
Clonality:	Polyclonal
Conjugate:	This PDE4D antibody is un-conjugated
Application:	Western Blotting (WB)

Product Details

Immunogen:	The immunogen is a synthetic peptide directed towards the C-terminal region of Human PDE4D
Sequence:	FQFELTLEED GESDTEKDSG SQVEEDTSCS DSKTLCTQDS ESTEIPLDEQ
Predicted Reactivity:	Cow: 100%, Dog: 100%, Guinea Pig: 100%, Horse: 100%, Human: 100%, Mouse: 100%, Rabbit: 100%, Rat: 100%, Zebrafish: 93%
Characteristics:	This is a rabbit polyclonal antibody against PDE4D. It was validated on Western Blot.
Purification:	Affinity Purified

Target Details

Target:	PDE4D
Alternative Name:	PDE4D (PDE4D Products)

Target Details

Background: This gene encodes one of four mammalian counterparts to the fruit fly 'dunce' gene. The encoded protein has 3',5'-cyclic-AMP phosphodiesterase activity and degrades cAMP, which acts as a signal transduction molecule in multiple cell types. This gene uses different promoters to generate multiple alternatively spliced transcript variants that encode functional proteins.

Protein Interaction Partner: MAGEA6, GOLGA8F, GOLGA8EP, COIL, TRAF1, ZBTB1, HDGFRP2, BIN1, MAPK1, PIAS4, PRKACA, UBC, SRC, SPTBN1, PIK3CA, LYN, GRB2, FYN, ARRB2, ARRB1, ABL1, APP, PAFAH1B1, CDK2, PPP3R1, PPP3CB, PPP3CA, GSK3B, CSNK1A1, ITSN1, SUMO2, GNB2L1, MDM2, Bub1, PDE4DIP, AKAP6

Protein Size: 507

Molecular Weight: 55 kDa

Gene ID: 5144

Pathways: [Cellular Response to Molecule of Bacterial Origin](#), [cAMP Metabolic Process](#), [Myometrial Relaxation and Contraction](#), [Regulation of G-Protein Coupled Receptor Protein Signaling](#)

Application Details

Application Notes: Optimal working dilution should be determined by the investigator.

Restrictions: For Research Use only

Handling

Format: Liquid

Concentration: 1 mg/mL

Buffer: Liquid. Purified antibody supplied in 1x PBS buffer with 0.09 % (w/v) sodium azide and 2 % sucrose.

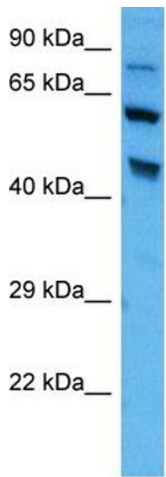
Preservative: Sodium azide

Precaution of Use: This product contains Sodium azide: a POISONOUS AND HAZARDOUS SUBSTANCE which should be handled by trained staff only.

Handling Advice: Avoid repeat freeze-thaw cycles.

Storage: -20 °C

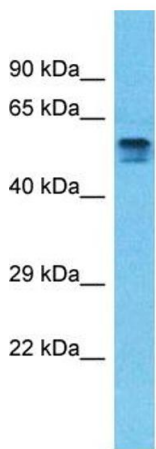
Storage Comment: For short term use, store at 2-8°C up to 1 week. For long term storage, store at -20°C in small aliquots to prevent freeze-thaw cycles.



Host: Rabbit
Target Name: Pde4D
Sample Type: Mouse Brain Lysate
Antibody Dilution: 1.0µg/ml

Western Blotting

Image 1. Host: Rabbit Target Name: PDE4D Sample Tissue: Mouse Brain Antibody Dilution: 1ug/ml



Host: Rabbit
Target Name: PDE4D
Sample Tissue: Thymus Tumor Lysate
Antibody Dilution: 1.0µg/ml

Western Blotting

Image 2. Host: Rabbit Target Name: PDE4D Sample Type: Thymus Tumor lysates Antibody Dilution: 1.0ug/ml