

Datasheet for ABIN2786839
anti-SERPINI2 antibody (Middle Region)



[Go to Product page](#)

2 Images

Overview

Quantity:	100 µL
Target:	SERPINI2
Binding Specificity:	Middle Region
Reactivity:	Human, Mouse, Rat, Dog, Horse, Rabbit, Cow, Guinea Pig, Pig
Host:	Rabbit
Clonality:	Polyclonal
Conjugate:	This SERPINI2 antibody is un-conjugated
Application:	Western Blotting (WB)

Product Details

Immunogen:	The immunogen is a synthetic peptide directed towards the middle region of human SERPINI2
Sequence:	LPRFKVEQKV DFKDVLVSLN ITEIFSGGCD LSGITDSSEV YVSQVTQKVF
Predicted Reactivity:	Cow: 100%, Dog: 86%, Guinea Pig: 77%, Horse: 100%, Human: 100%, Mouse: 100%, Pig: 100%, Rabbit: 100%, Rat: 93%
Characteristics:	This is a rabbit polyclonal antibody against SERPINI2. It was validated on Western Blot using a cell lysate as a positive control.
Purification:	Affinity Purified

Target Details

Target:	SERPINI2
---------	----------

Target Details

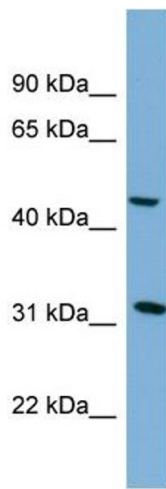
Alternative Name:	SERPINI2 (SERPINI2 Products)
Background:	<p>The protein encoded by this gene is a member of the serine protease inhibitor (serpin) superfamily made up of proteins which play central roles in the regulation of a wide variety of physiological processes, including coagulation, fibrinolysis, developmen</p> <p>Alias Symbols: MEPI, PANCPIN, PI14, TSA2004</p> <p>Protein Interaction Partner: UBQLN1, UBQLN4,</p> <p>Protein Size: 405</p>
Molecular Weight:	46 kDa
Gene ID:	5276
NCBI Accession:	NM_006217 , NP_006208
UniProt:	O75830

Application Details

Application Notes:	Optimal working dilutions should be determined experimentally by the investigator.
Comment:	Antigen size: 405 AA
Restrictions:	For Research Use only

Handling

Format:	Liquid
Concentration:	Lot specific
Buffer:	Liquid. Purified antibody supplied in 1x PBS buffer with 0.09 % (w/v) sodium azide and 2 % sucrose.
Preservative:	Sodium azide
Precaution of Use:	This product contains Sodium azide: a POISONOUS AND HAZARDOUS SUBSTANCE which should be handled by trained staff only.
Handling Advice:	Avoid repeated freeze-thaw cycles.
Storage:	-20 °C
Storage Comment:	For short term use, store at 2-8°C up to 1 week. For long term storage, store at -20°C in small aliquots to prevent freeze-thaw cycles.



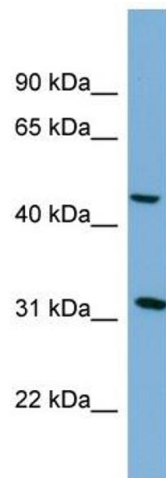
Western Blotting

Image 1. WB Suggested Anti-SERPINI2 Antibody Titration:

0.2-1 ug/ml

ELISA Titer: 1:312500

Positive Control: COLO205 cell lysate



Western Blotting

Image 2. WB Suggested Anti-SERPINI2

Antibody Titration: 0.2-1 µg/mL ELISA Titer: 1:12500

Positive Control: COLO205 cell lysate

SERPINI2 is supported by BioGPS gene expression data to be expressed in COLO205