

Datasheet for ABIN2786852
anti-PKC eta antibody (N-Term)[Go to Product page](#)

2 Images

Overview

Quantity:	100 µL
Target:	PKC eta (PRKCH)
Binding Specificity:	N-Term
Reactivity:	Human, Mouse, Rat, Cow, Guinea Pig, Dog, Horse, Zebrafish (Danio rerio), Pig
Host:	Rabbit
Clonality:	Polyclonal
Conjugate:	This PKC eta antibody is un-conjugated
Application:	Western Blotting (WB)

Product Details

Immunogen:	The immunogen is a synthetic peptide directed towards the N terminal region of human PRKCH
Sequence:	KKGHQLDPY LTVSVDQVRV GQTSTKQKTN KPTYNEEFCA NVTDGGHLEL
Predicted Reactivity:	Cow: 100%, Dog: 100%, Guinea Pig: 79%, Horse: 100%, Human: 100%, Mouse: 100%, Pig: 100%, Rat: 100%, Zebrafish: 85%
Characteristics:	This is a rabbit polyclonal antibody against PRKCH. It was validated on Western Blot.
Purification:	Affinity Purified

Target Details

Target:	PKC eta (PRKCH)
Alternative Name:	PRKCH (PRKCH Products)

Target Details

Background:	<p>Protein kinase C (PKC) is a family of serine- and threonine-specific protein kinases that can be activated by calcium and the second messenger diacylglycerol. PKC family members phosphorylate a wide variety of protein targets and are known to be involved in diverse cellular signaling pathways. PKC family members also serve as major receptors for phorbol esters, a class of tumor promoters. Each member of the PKC family has a specific expression profile and is believed to play a distinct role in cells. The protein encoded by this gene is one of the PKC family members. It is a calcium-independent and phospholipids-dependent protein kinase. It is predominantly expressed in epithelial tissues and has been shown to reside specifically in the cell nucleus. This protein kinase can regulate keratinocyte differentiation by activating the MAP kinase MAPK13 (p38delta)-activated protein kinase cascade that targets CCAAT/enhancer-binding protein alpha (CEBPA). It is also found to mediate the transcription activation of the transglutaminase 1 (TGM1) gene.</p> <p>Alias Symbols: MGC26269, MGC5363, PKC-L, PKCL, PRKCL, nPKC-eta</p> <p>Protein Interaction Partner: BANP, HSP90AA1, GSK3A, PPP1R14A, UBC, VHL, PRKCH, NFE2L2, MGMT, ZBTB80S, PARD6A, PRKD1, NUMB, ITGB2, SRC, PTPN11, FYN, CDK2, PDPK1, AKAP13,</p> <p>Protein Size: 683</p>
Molecular Weight:	78 kDa
Gene ID:	5583
NCBI Accession:	NM_006255 , NP_006246
UniProt:	P24723
Pathways:	Myometrial Relaxation and Contraction , Thromboxane A2 Receptor Signaling

Application Details

Application Notes:	Optimal working dilutions should be determined experimentally by the investigator.
Comment:	Antigen size: 683 AA
Restrictions:	For Research Use only

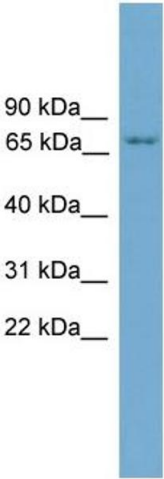
Handling

Format:	Liquid
Concentration:	Lot specific
Buffer:	Liquid. Purified antibody supplied in 1x PBS buffer with 0.09 % (w/v) sodium azide and 2 % sucrose.

Handling

Preservative:	Sodium azide
Precaution of Use:	This product contains Sodium azide: a POISONOUS AND HAZARDOUS SUBSTANCE which should be handled by trained staff only.
Handling Advice:	Avoid repeated freeze-thaw cycles.
Storage:	-20 °C
Storage Comment:	For short term use, store at 2-8°C up to 1 week. For long term storage, store at -20°C in small aliquots to prevent freeze-thaw cycles.

Images

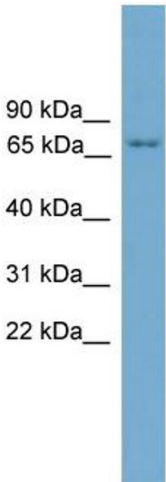


Western Blotting

Image 1. WB Suggested Anti-PRKCH Antibody Titration: 1.0 µg/mL

Positive Control: Jurkat Whole Cell

PRKCH is strongly supported by BioGPS gene expression data to be expressed in Human Jurkat cells



Rabbit Anti-PRKCH Antibody
Catalog Number: ARP56703
Lot Number: QC27758
Lane: Jurkat Cell Lysate

Antibody Titration: 1.0 µg/ml
Gel Concentration: 12%

Western Blotting

Image 2.