

Datasheet for ABIN2786866  
**anti-RPE antibody (N-Term)**

## 3 Images

[Go to Product page](#)

## Overview

Quantity:	100 µL
Target:	RPE
Binding Specificity:	N-Term
Reactivity:	Human, Mouse, Rat, Cow, Zebrafish (Danio rerio), Dog, Horse, Rabbit, Guinea Pig
Host:	Rabbit
Clonality:	Polyclonal
Conjugate:	This RPE antibody is un-conjugated
Application:	Western Blotting (WB), Immunohistochemistry (IHC)

## Product Details

Immunogen:	The immunogen is a synthetic peptide directed towards the N terminal region of human RPE
Sequence:	ALIKDIRENG MKSCSVTQAE VQWHSQGPLQ VGLAIKPGTS VEYLAPWANQ
Predicted Reactivity:	Cow: 100%, Dog: 93%, Guinea Pig: 93%, Horse: 93%, Human: 100%, Mouse: 93%, Rabbit: 93%, Rat: 93%, Zebrafish: 86%
Characteristics:	This is a rabbit polyclonal antibody against RPE. It was validated on Western Blot using a cell lysate as a positive control.
Purification:	Affinity Purified

## Target Details

Target:	RPE
---------	-----

## Target Details

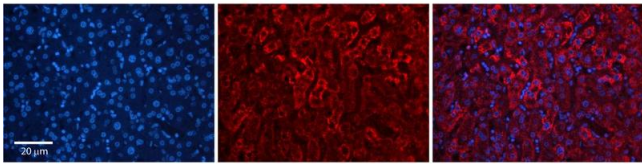
Alternative Name:	RPE ( <a href="#">RPE Products</a> )
Background:	The function of this protein remains unknown. Alias Symbols: MGC2636, RPE2-1 Protein Interaction Partner: RPE, UBC, MRI1, EXOSC10, Protein Size: 178
Molecular Weight:	19 kDa
Gene ID:	6120
NCBI Accession:	<a href="#">NM_006916</a> , <a href="#">NP_008847</a>
UniProt:	<a href="#">Q53TV9</a>

## Application Details

Application Notes:	Optimal working dilutions should be determined experimentally by the investigator.
Comment:	Antigen size: 178 AA
Restrictions:	For Research Use only

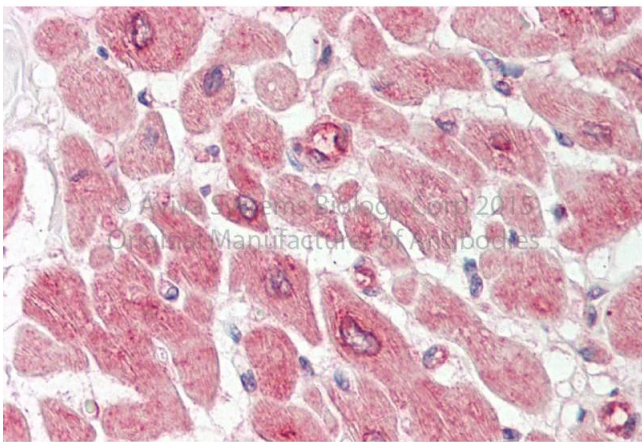
## Handling

Format:	Liquid
Concentration:	Lot specific
Buffer:	Liquid. Purified antibody supplied in 1x PBS buffer with 0.09 % (w/v) sodium azide and 2 % sucrose.
Preservative:	Sodium azide
Precaution of Use:	This product contains Sodium azide: a POISONOUS AND HAZARDOUS SUBSTANCE which should be handled by trained staff only.
Handling Advice:	Avoid repeated freeze-thaw cycles.
Storage:	-20 °C
Storage Comment:	For short term use, store at 2-8°C up to 1 week. For long term storage, store at -20°C in small aliquots to prevent freeze-thaw cycles.



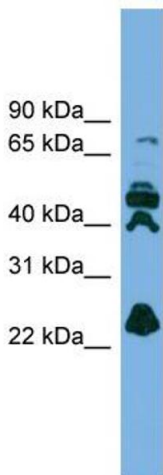
### Immunohistochemistry

**Image 1.** Rabbit Anti-RPE Antibody Catalog Number: ARP56726\_P050 Formalin Fixed Paraffin Embedded Tissue: Human Adult Liver Observed Staining: Cytoplasm in hepatocytes, strong signal, wide tissue distribution Primary Antibody Concentration: 1:100 Secondary Antibody: Donkey anti-Rabbit-Cy3 Secondary Antibody Concentration: 1:200 Magnification: 20X Exposure Time: 0.5 – 2.0 sec Protocol located in Reviews and Data.



### Immunohistochemistry

**Image 2.** Rabbit Anti-RPE antibody Catalog Number: ARP56726 Formalin Fixed Paraffin Embedded Tissue: Human Adult Heart Observed Staining: Cytoplasm in hepatocytes Primary Antibody Concentration: 1:600 Secondary Antibody: Donkey anti-Rabbit-Cy3 Secondary Antibody Concentration: 1:200 Magnification: 20X Exposure Time: 0.5 – 2.0 sec



### Western Blotting

**Image 3.** WB Suggested Anti-RPE Antibody Titration: 0.2-1 ug/ml ELISA Titer: 1:1562500 Positive Control: ACHN cell lysate RPE is strongly supported by BioGPS gene expression data to be expressed in Human ACHN cells