

Datasheet for ABIN2786867

## anti-RPL10A antibody (Middle Region)



[Go to Product page](#)

### 1 Image

#### Overview

Quantity:	100 µL
Target:	RPL10A
Binding Specificity:	Middle Region
Reactivity:	Human, Mouse, Rat, Guinea Pig, Horse, Cow, Rabbit, Dog, Zebrafish (Danio rerio), Goat
Host:	Rabbit
Clonality:	Polyclonal
Conjugate:	This RPL10A antibody is un-conjugated
Application:	Western Blotting (WB)

#### Product Details

Immunogen:	The immunogen is a synthetic peptide directed towards the middle region of human RPL10A
Sequence:	YDAFLASESL IKQIPRLGP GLNKAGKFPS LLTHNENMVA KVDEVKSTIK
Predicted Reactivity:	Cow: 100%, Dog: 100%, Goat: 100%, Guinea Pig: 100%, Horse: 100%, Human: 100%, Mouse: 100%, Rabbit: 100%, Rat: 100%, Zebrafish: 100%
Characteristics:	This is a rabbit polyclonal antibody against RPL10A. It was validated on Western Blot using a cell lysate as a positive control.
Purification:	Affinity Purified

#### Target Details

Target:	RPL10A
---------	--------

## Target Details

Alternative Name:	RPL10A ( <a href="#">RPL10A Products</a> )
Background:	<p>Ribosomes, the organelles that catalyze protein synthesis, consist of a small 40S subunit and a large 60S subunit. Together these subunits are composed of 4 RNA species and approximately 80 structurally distinct proteins. This gene encodes a ribosomal protein that is a component of the 60S subunit. The protein belongs to the L1P family of ribosomal proteins. It is located in the cytoplasm. The expression of this gene is downregulated in the thymus by cyclosporin-A (CsA), an immunosuppressive drug. Studies in mice have shown that the expression of the ribosomal protein L10a gene is downregulated in neural precursor cells during development. This gene previously was referred to as NEDD6 (neural precursor cell expressed, developmentally downregulated 6), but it has been renamed RPL10A (ribosomal protein 10a). As is typical for genes encoding ribosomal proteins, there are multiple processed pseudogenes of this gene dispersed through the genome.</p> <p>Alias Symbols: Csa-19, NEDD6, L10A</p> <p>Protein Interaction Partner: RGS17, HUWE1, CEP250, TUBG1, TP53, UBC, MDM2, RNF2, TARDBP, YWHAQ, PAN2, UBL4A, VCAM1, SRPR, ITGA4, FN1, ACTB, ESR1, RPLP0P6, RPL10L, RAD18, RPS27L, RPL23, RPL14, S100A10, RPS28, RPS27A, RPS26, RPS25, RPS24, RPS23, RPS21, RPS20, RPS19, RPS16, RPS15A, RPS1</p> <p>Protein Size: 217</p>
Molecular Weight:	25 kDa
Gene ID:	4736
NCBI Accession:	<a href="#">NM_007104</a> , <a href="#">NP_009035</a>
UniProt:	<a href="#">P62906</a>

## Application Details

Application Notes:	Optimal working dilutions should be determined experimentally by the investigator.
Comment:	Antigen size: 217 AA
Restrictions:	For Research Use only

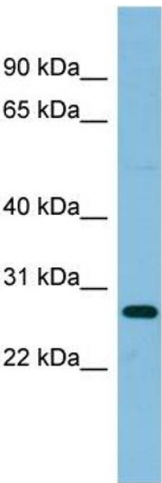
## Handling

Format:	Liquid
Concentration:	Lot specific
Buffer:	Liquid. Purified antibody supplied in 1x PBS buffer with 0.09 % (w/v) sodium azide and 2 %

Handling

	sucrose.
Preservative:	Sodium azide
Precaution of Use:	This product contains Sodium azide: a POISONOUS AND HAZARDOUS SUBSTANCE which should be handled by trained staff only.
Handling Advice:	Avoid repeated freeze-thaw cycles.
Storage:	-20 °C
Storage Comment:	For short term use, store at 2-8°C up to 1 week. For long term storage, store at -20°C in small aliquots to prevent freeze-thaw cycles.

Images



**Western Blotting**

**Image 1.** WB Suggested Anti-RPL10A Antibody Titration: 0.2-1 ug/ml ELISA Titer: 1:1562500 Positive Control: HepG2 cell lysate