

Datasheet for ABIN2786871
anti-MSRA antibody (Middle Region)[Go to Product page](#)

2 Images

Overview

| | |
|----------------------|---|
| Quantity: | 100 µL |
| Target: | MSRA |
| Binding Specificity: | Middle Region |
| Reactivity: | Human, Mouse, Rat, Pig, Dog, Rabbit, Horse, Zebrafish (Danio rerio) |
| Host: | Rabbit |
| Clonality: | Polyclonal |
| Conjugate: | This MSRA antibody is un-conjugated |
| Application: | Western Blotting (WB), Immunohistochemistry (IHC) |

Product Details

| | |
|-----------------------|--|
| Immunogen: | The immunogen is a synthetic peptide directed towards the middle region of human MSRA |
| Sequence: | YQKVLSEHGF GPITTDIREG QTFYYAEDYH QQYLSKNPNG YCGLGGTGVS |
| Predicted Reactivity: | Dog: 100%, Horse: 100%, Human: 100%, Mouse: 100%, Pig: 100%, Rabbit: 100%, Rat: 100%, Zebrafish: 100% |
| Characteristics: | This is a rabbit polyclonal antibody against MSRA. It was validated on Western Blot using a cell lysate as a positive control. |
| Purification: | Affinity Purified |

Target Details

| | |
|---------|------|
| Target: | MSRA |
|---------|------|

Target Details

| | |
|-------------------|--|
| Alternative Name: | MSRA (MSRA Products) |
| Background: | <p>This protein is ubiquitous and highly conserved. It carries out the enzymatic reduction of methionine sulfoxide to methionine. Human and animal studies have shown the highest levels of expression in kidney and nervous tissue. Its proposed function is the repair of oxidative damage to proteins to restore biological activity. Three transcript variants encoding different isoforms have been found for this gene.</p> <p>Alias Symbols: PMSR</p> <p>Protein Interaction Partner: UBC,</p> <p>Protein Size: 235</p> |
| Molecular Weight: | 26 kDa |
| Gene ID: | 4482 |
| NCBI Accession: | NM_012331 , NP_036463 |
| UniProt: | Q9UJ68 |

Application Details

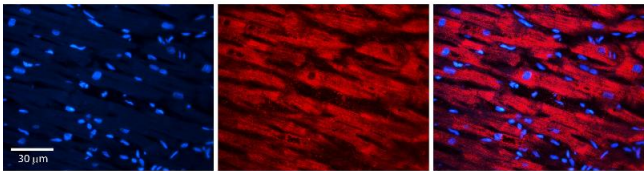
| | |
|--------------------|--|
| Application Notes: | Optimal working dilutions should be determined experimentally by the investigator. |
| Comment: | Antigen size: 235 AA |
| Restrictions: | For Research Use only |

Handling

| | |
|--------------------|--|
| Format: | Liquid |
| Concentration: | Lot specific |
| Buffer: | Liquid. Purified antibody supplied in 1x PBS buffer with 0.09 % (w/v) sodium azide and 2 % sucrose. |
| Preservative: | Sodium azide |
| Precaution of Use: | This product contains Sodium azide: a POISONOUS AND HAZARDOUS SUBSTANCE which should be handled by trained staff only. |
| Handling Advice: | Avoid repeated freeze-thaw cycles. |
| Storage: | -20 °C |
| Storage Comment: | For short term use, store at 2-8°C up to 1 week. For long term storage, store at -20°C in small |

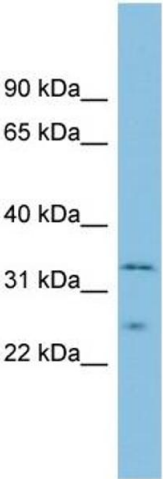
aliquots to prevent freeze-thaw cycles.

Images



Immunohistochemistry

Image 1. Rabbit Anti-MSRA Antibody Catalog Number: ARP56732_P050 Formalin Fixed Paraffin Embedded Tissue: Human heart Tissue Observed Staining: Cytoplasmic Primary Antibody Concentration: N/A Other Working Concentrations: 1:600 Secondary Antibody: Donkey anti-Rabbit-Cy3 Secondary Antibody Concentration: 1:200 Magnification: 20X Exposure Time: 0.5 - 2.0 sec



Western Blotting

Image 2. WB Suggested Anti-MSRA Antibody Titration: 0.2-1 ug/ml ELISA Titer: 1:312500 Positive Control: Human Lung