

Datasheet for ABIN2786886  
**anti-PNPLA8 antibody (Middle Region)**[Go to Product page](#)[1 Image](#)[1 Publication](#)

## Overview

Quantity:	100 µL
Target:	PNPLA8
Binding Specificity:	Middle Region
Reactivity:	Human, Mouse, Rat, Rabbit, Cow, Dog, Guinea Pig, Horse, Zebrafish (Danio rerio)
Host:	Rabbit
Clonality:	Polyclonal
Conjugate:	This PNPLA8 antibody is un-conjugated
Application:	Western Blotting (WB)

## Product Details

Immunogen:	The immunogen is a synthetic peptide directed towards the middle region of human PNPLA8
Sequence:	IDNRTRALVQ ALRRTDPKL CITRVEELTF HLLEFPEGKG VAVKERIIPY
Predicted Reactivity:	Cow: 100%, Dog: 100%, Guinea Pig: 100%, Horse: 100%, Human: 100%, Mouse: 100%, Rabbit: 100%, Rat: 100%, Zebrafish: 92%
Characteristics:	This is a rabbit polyclonal antibody against PNPLA8. It was validated on Western Blot using a cell lysate as a positive control.
Purification:	Affinity Purified

## Target Details

Target:	PNPLA8
---------	--------

## Target Details

Alternative Name:	PNPLA8 ( <a href="#">PNPLA8 Products</a> )
Background:	<p>Phospholipase A2 catalyzes cleavage of fatty acids from phospholipids, thereby regulating membrane physical properties and the release of lipid second messengers and growth factors.</p> <p>Phospholipase A2 activity also modulates cellular growth programs, inflam</p> <p>Alias Symbols: IPLA2(GAMMA), IPLA2-2, IPLA2G</p> <p>Protein Interaction Partner: UBC,</p> <p>Protein Size: 782</p>
Molecular Weight:	88 kDa
Gene ID:	50640
NCBI Accession:	<a href="#">NM_015599</a> , <a href="#">NP_056538</a>
UniProt:	<a href="#">Q9NP80</a>

## Application Details

Application Notes:	Optimal working dilutions should be determined experimentally by the investigator.
Comment:	Antigen size: 782 AA
Restrictions:	For Research Use only

## Handling

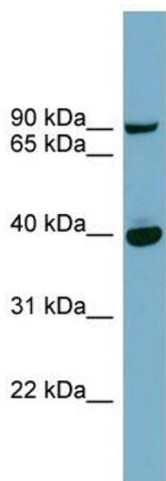
Format:	Liquid
Concentration:	Lot specific
Buffer:	Liquid. Purified antibody supplied in 1x PBS buffer with 0.09 % (w/v) sodium azide and 2 % sucrose.
Preservative:	Sodium azide
Precaution of Use:	This product contains Sodium azide: a POISONOUS AND HAZARDOUS SUBSTANCE which should be handled by trained staff only.
Handling Advice:	Avoid repeated freeze-thaw cycles.
Storage:	-20 °C
Storage Comment:	For short term use, store at 2-8°C up to 1 week. For long term storage, store at -20°C in small aliquots to prevent freeze-thaw cycles.

Publications

Product cited in: Kam, Hennessy, Chua, Gan, Philp, Hon, Lai, Chan, Ong, Wong, Lim, Ling, Tan, Tan, Ho, Kon: "Characterization of the human gastric fluid proteome reveals distinct pH-dependent protein profiles: implications for biomarker studies." in: **Journal of proteome research**, Vol. 10, Issue 10, pp. 4535-46, (2011) ([PubMed](#)).

Koh, Rhee, Kang, Yang, You, Lee, Min, Kim, Nam, Kim: "Differential gene expression profiles of metastases in paired primary and metastatic colorectal carcinomas." in: **Oncology**, Vol. 75, Issue 1-2, pp. 92-101, (2008) ([PubMed](#)).

Images



Western Blotting

**Image 1. WB Suggested Anti-PNPLA8 Antibody Titration:**

0.2-1 ug/ml

**ELISA Titer:** 1:312500

**Positive Control:** 293T cell lysate