



[Go to Product page](#)

Datasheet for ABIN2786891
anti-LAP3 antibody (N-Term)

3 Images

Overview

Quantity:	100 µL
Target:	LAP3
Binding Specificity:	N-Term
Reactivity:	Human, Mouse, Rat, Rabbit, Dog, Horse, Cow, Guinea Pig, Pig
Host:	Rabbit
Clonality:	Polyclonal
Conjugate:	This LAP3 antibody is un-conjugated
Application:	Western Blotting (WB)

Product Details

Immunogen:	The immunogen is a synthetic peptide directed towards the N terminal region of human LAP3
Sequence:	LNISGPPLKA GKTRTFYGLH QDFPSVVLVG LGKKAAGIDE QENWHEGKEN
Predicted Reactivity:	Cow: 100%, Dog: 100%, Guinea Pig: 93%, Horse: 100%, Human: 100%, Mouse: 100%, Pig: 100%, Rabbit: 100%, Rat: 100%
Characteristics:	This is a rabbit polyclonal antibody against LAP3. It was validated on Western Blot using a cell lysate as a positive control.
Purification:	Affinity Purified

Target Details

Target:	LAP3
---------	------

Target Details

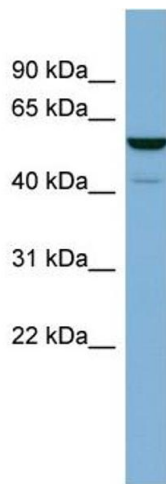
Alternative Name:	LAP3 (LAP3 Products)
Background:	<p>LAP3 is presumably involved in the processing and regular turnover of intracellular proteins.</p> <p>LAP3 catalyzes the removal of unsubstituted N-terminal amino acids from various peptides.</p> <p>Alias Symbols: LAP, LAPEP, PEPS</p> <p>Protein Interaction Partner: RAPGEF2, UBC, MDM2, RNF2, AARSD1, NIF3L1, SH3GLB1, TPRKB, ARPC2, OGT, SH3GL1, AGFG1, ALAD, LIG4, APP, ISG15, TAB1, UBA5, DDA1,</p> <p>Protein Size: 519</p>
Molecular Weight:	56 kDa
Gene ID:	51056
NCBI Accession:	NM_015899 , NP_056991
UniProt:	P28838

Application Details

Application Notes:	Optimal working dilutions should be determined experimentally by the investigator.
Comment:	Antigen size: 519 AA
Restrictions:	For Research Use only

Handling

Format:	Liquid
Concentration:	Lot specific
Buffer:	Liquid. Purified antibody supplied in 1x PBS buffer with 0.09 % (w/v) sodium azide and 2 % sucrose.
Preservative:	Sodium azide
Precaution of Use:	This product contains Sodium azide: a POISONOUS AND HAZARDOUS SUBSTANCE which should be handled by trained staff only.
Handling Advice:	Avoid repeated freeze-thaw cycles.
Storage:	-20 °C
Storage Comment:	For short term use, store at 2-8°C up to 1 week. For long term storage, store at -20°C in small aliquots to prevent freeze-thaw cycles.

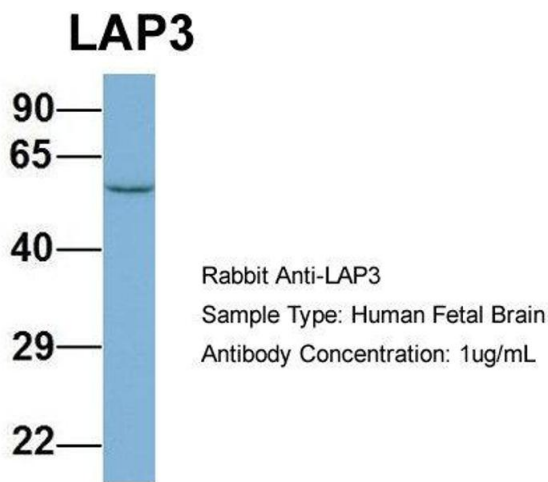


Western Blotting

Image 1. WB Suggested Anti-LAP3 Antibody Titration: 0.2-1 ug/ml

ELISA Titer: 1:312500

Positive Control: Human heart



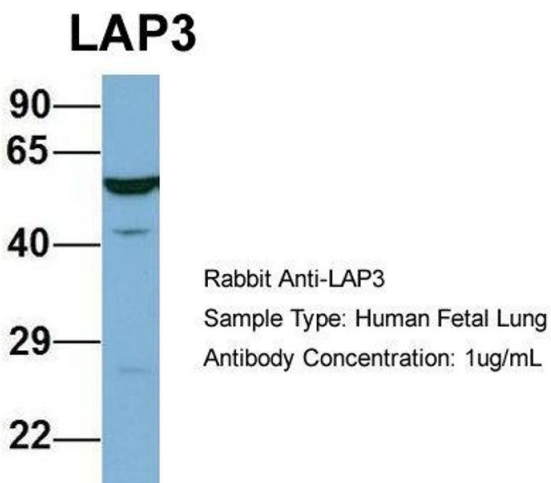
Western Blotting

Image 2. Host: Rabbit

Target Name: LAP3

Sample Tissue: Human Fetal Brain

Antibody Dilution: 1.0 µg/mL



Western Blotting

Image 3. Host: Rabbit

Target Name: LAP3

Sample Tissue: Human Fetal Lung

Antibody Dilution: 1.0 µg/mL